

## Community Services Transformation

# NORTH EAST FLINTSHIRE

Locality Needs Assessment 2021-22



GIG  
CYMRU  
NHS  
WALES

Bwrdd Iechyd Prifysgol  
Betsi Cadwaladr  
University Health Board



CYNGOR  
Sir y Fflint  
Flintshire  
COUNTY COUNCIL



CYDWEITHREDFA GWELLA GWASANAETHAU  
GOFAL A LLESIAINT **GOGLEDD CYMRU**

**NORTH WALES** SOCIAL CARE AND WELL-BEING  
SERVICES IMPROVEMENT COLLABORATIVE



CONTENTS

INTRODUCTION .....	3	THE MENTAL HEALTH OF PEOPLE IN NORTH EAST FLINTSHIRE.....	16-17
FLINTSHIRE AS A VILLAGE OF 100 PEOPLE		LIVING WITH A LONG-TERM CONDITION IN NORTH EAST FLINTSHIRE.....	18-19
OUR POPULATION .....	4-7	PEOPLE’S INVOLVEMENT WITH HEALTH & CARE SERVICES IN NORTH EAST FLINTSHIRE.....	20-21
IN OUR VILLAGE .....	8-9	PEOPLE’S EXPERIENCES OF HEALTH & CARE SERVICES IN NORTH EAST FLINTSHIRE.....	22
ABOUT NORTH EAST FLINTSHIRE .....	10-11	LOCALITY PEN PROFILES: DATA SOURCE LIST .....	23-26
LIFE IN NORTH EAST FLINTSHIRE .....	12-13		
THE PHYSICAL HEALTH OF PEOPLE IN NORTH EAST FLINTSHIRE.....	14		
SPOTLIGHT ON NORTH EAST FLINTSHIRE.....	15		

INTRODUCTION

Locality Pen Profiles have been developed as part of the North Wales Regional Partnership Board’s Community Services Transformation Programme, and are intended to support the development of place-based strategic planning and commissioning for health and care, across the region.

A Pen Profile has been developed for each of the **14 integrated health and social care localities** in North Wales. A Locality is defined as

▯▯  
A geographically bound area, which brings together all local services involved in the delivery of health and social care services for the area. A locality serves a population of between 25,000 and 100,000 people.▯▯

Our localities are based largely on GP cluster boundaries.

Locality Pen Profiles bring together data and insights from different agencies to build up a rounded picture of the needs and strengths of different communities at a very local, granular level. These insights are being used to help inform health and social care priorities for localities/clusters.

This data will also be used on an ongoing basis to adjust priorities and enable partners to hold one another to account for delivering their ambitions.

The Locality Pen Profiles developed by the Community Services Transformation programme are very much a work in progress, and will continue to evolve and grow as the range and type of information we have available at a more granular, locality footprint, increases. Nonetheless, they represent a significant step in realising our collective ambition to plan and deliver care and support in response to the needs of our local communities.

# FLINTSHIRE

## AS A VILLAGE OF 100 PEOPLE

### OUR POPULATION

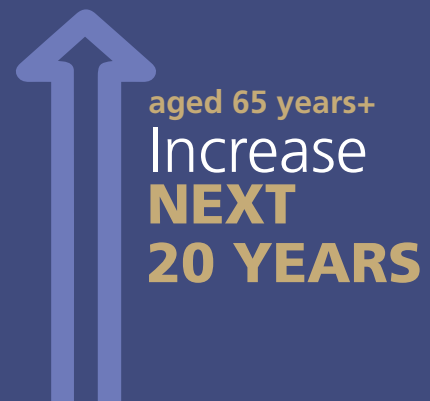
In our village...

#### AGE

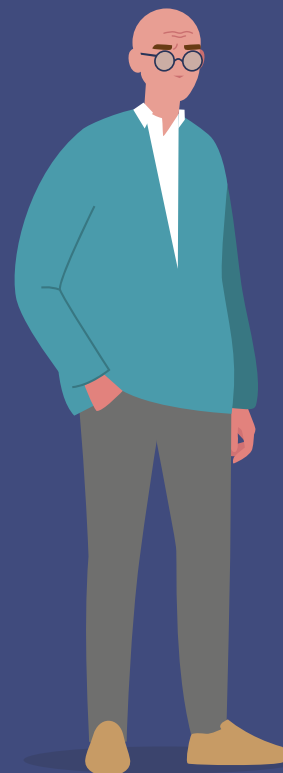


**156,100**

Is our usually resident population in **FLINTSHIRE** in 2019. In our village of 100, each person represents 1,561 people



The number of people aged over 65 years is expected to increase over the next 20 years



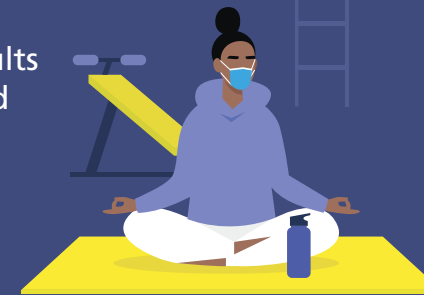
**21** people are aged  
**65 years +**

**13** people aged  
**65 years +**  
live alone 

# HEALTH & WELLBEING

## Good health

**81** Adults are in good health



## Service use

**5** Adults receive a service from social care



**60** Older people are in good health



**7** Adults are unable to manage at least one self-care activity



**4** Of whom, are aged over 65 years

# FLINTSHIRE

## AS A VILLAGE OF 100 PEOPLE

### OUR POPULATION

In our village...



**2** People are from a minority ethnic group

**11**

people speak Welsh

Cymraeg



## WIDER DETERMINANTS OF HEALTH

### Child poverty

Of the 100 children in our village...

**19**

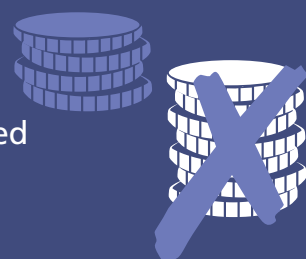
are living in poverty



### Unemployment

**20**

Adults are unemployed



### Sense of community

**56**

Adults feel part of their community

### Loneliness

**17**

Adults feel lonely



## LIFESTYLE BEHAVIOURS

### Healthy weight

**38**

Adults are a healthy weight

**72**

Children are a healthy weight

### Physically active

**30**

Adults are physically inactive



### Nutrition

**31**

Adults eat 5 portions of fruit and veg a day

### Smoking

**17**

Adults smoke

### Alcohol

**21**

Adults drink above recommended guidelines

## MENTAL HEALTH & DISABILITY

### Mental Health

**2**

Adults receive support with their mental health



### Learning disability

**1**

Person is registered as having a learning disability

# NORTH EAST FLINTSHIRE

## AS A VILLAGE OF 100 PEOPLE

In our village...

# HEALTH & WELL-BEING



2

People have  
Arterial  
Fibrillation

0

People  
have  
osteoporosis

7

People  
have  
diabetes

2

People  
have had  
a stroke

4

People  
have Coronary  
Heart Disease

1

Person  
has rheumatoid  
arthritis

12

people  
are obese

1

Person  
has epilepsy

1

Person has  
heart failure

2

people  
have COPD

0

People  
are receiving  
palliative care

1

Person  
has dementia

16

People have  
hypertension

7

people have  
asthma

3

People  
have cancer

1

Person receives  
support for their  
mental health



# ABOUT NORTH EAST FLINTSHIRE

Of the 156,100 people living in **FLINTSHIRE**, approximately 62,281 live in the **NORTH EAST FLINTSHIRE** locality.

**NORTH EAST FLINTSHIRE** includes the towns and surrounding communities of Broughton, Connah's Quay, Hawarden, Queensferry and Shotton.

## The people...

The % of the North Wales population is expected to increase by 6.7% between 2011 and 2036. All Local Authorities, including **FLINTSHIRE** will see a sharp increase in the numbers of people over 85 years of age.

**6.7%**  
North Wales  
Population  
Increase  
**NEXT  
25 YEARS**



The GP list size of **NORTH EAST FLINTSHIRE** is 61,100 and has a greater proportion of patients aged 25-44 than BCUHB and Wales averages

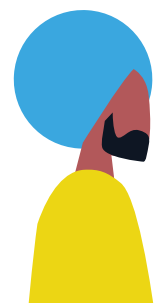
**61,100**

## Highest number

The East Area has the highest number of residents in the BCUHB region and has the youngest population.

**82,376**

people living in **FLINTSHIRE** are aged between 16-64.



**1.6%**

of people in **FLINTSHIRE** are from a Black, Asian or minority ethnic community

**11%**

of adults in **FLINTSHIRE** speak Welsh. This is below the Wales average (18%) and the BCUHB average (33%)

Cymraeg



**1%**

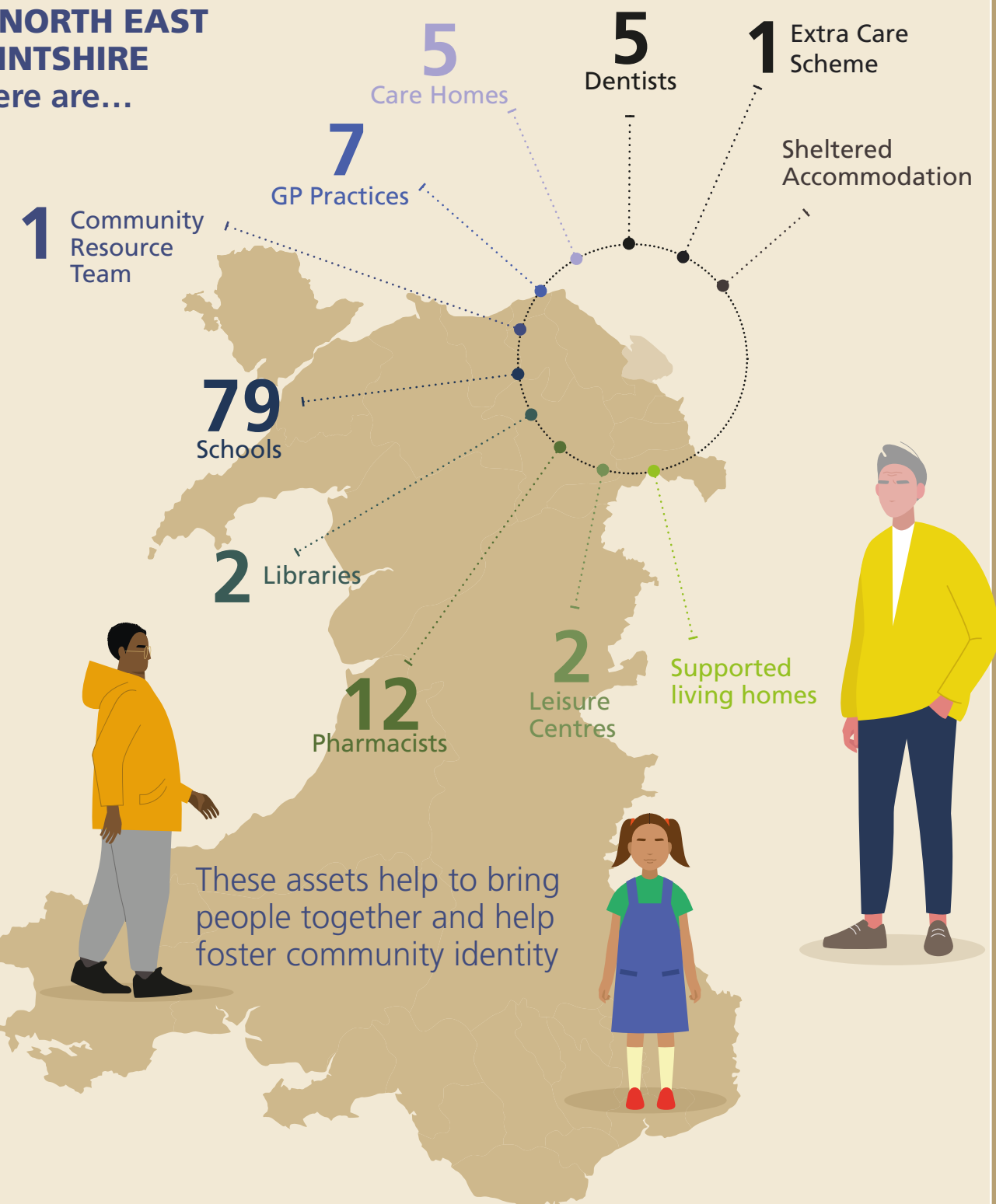
of adults in **FLINTSHIRE** identify as LGB

## NORTH EAST FLINTSHIRE

### Its assets...

There are a range of important assets within the locality that not only help to deliver community health and social care, but which also support the health and well-being of the whole population.

### In NORTH EAST FLINTSHIRE there are...





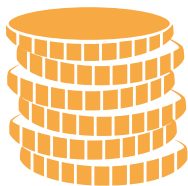
# LIFE IN NORTH EAST FLINTSHIRE

Health is crucially linked with education; good health and wellbeing are associated with improved attendance and attainment at school, which in turn leads to improved employment opportunities and broader career options.

By the age of 30 those with the highest levels of education are expected to live four years longer than those with the lowest levels of education. Education is the single most important modifiable social determinant of health, it is both potentiating and protective, it can trigger healthier futures, mitigate social stressors and provide access to employment opportunities and life chances that could protect individuals from later-life disadvantage.

80.2%

The percentage of adults in **FLINTSHIRE** who are in employment is 80.2% - above the BCUHB average (75.3%) and the Wales average (73.8)



3 **FLINTSHIRE** LSOAs feature in the 10% most deprived in Wales for access to services



19%

of children in **FLINTSHIRE** live in poverty - this is below the Welsh average



17%

of households in **FLINTSHIRE** don't have a car or van. This is below the BCUHB average (20.3%)  
Not having access to a car or van impacts on the availability of services to those without personal transport.

There are predicted to be

14,742

people living in fuel poverty in **FLINTSHIRE**

12.7%

of the **NORTH EAST FLINTSHIRE** population live in the most deprived areas, with a further 17.7% living in the next most deprived areas



The rate of households unintentionally homeless and in priority need in **FLINTSHIRE** is 6 per 10,000. This is statistically significantly below the Wales average (22.5) and this the lowest in North Wales

## HOUSING ASSESSMENTS

The % of housing assessments which are free from category one hazards in **FLINTSHIRE** (65.6%) is below the Wales average (68.7%)

3.16%

of adults in **FLINTSHIRE** experienced hunger because they did not have enough food

8.97%

of adults in **FLINTSHIRE** struggle to eat enough food

9.66%

of adults in **FLINTSHIRE** are worried about not having enough to eat.

81%

of people in **FLINTSHIRE** felt that their home best supports their well-being

There are fewer pensioner only households in **FLINTSHIRE** than the BCUHB and Wales Average



# THE PHYSICAL HEALTH OF PEOPLE IN NORTH EAST FLINTSHIRE

16.9% of the population of **FLINTSHIRE** Smoke - this is below the Wales average (17.4%) and the BCUHB average (17.6%)

20.6% of the adult population of **FLINTSHIRE** drink above recommended guidelines. This is higher than both the Wales (18.6) and BCUHB (17.8) averages

69% of adults in **FLINTSHIRE** do not eat the recommended 5 portions of fruit and veg

The percentage of people across North Wales who are a healthy weight is decreasing - in **FLINTSHIRE** 62% of adults are overweight and obese

72.2% of children in **FLINTSHIRE** aged 5 are of a healthy weight. This is below the Wales average (73.6) but above the BCU average (69.7)

Life expectancy for Women in **FLINTSHIRE** is 83.5 years, although healthy life expectancy is 68.9 years. Women in **FLINTSHIRE** spend 83.5% of their life in good health

Life expectancy for Men in **FLINTSHIRE** is 79.0 years, although healthy life expectancy is 67.7 years. Men in **FLINTSHIRE** spend 85.8% of their life in good health

97% of children in **FLINTSHIRE** report being in good/very good health

19% report having a long standing illness, and;

5% report having a limiting long standing illness



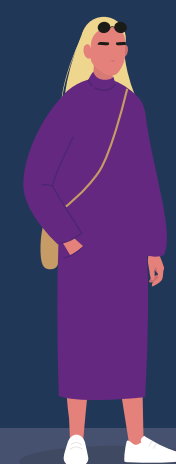
**However....**

80.8% of working age adults are in good health - above than the Wales average (76%) and BCUHB average (78.7%)

When it comes to people aged over 65 years of age in **FLINTSHIRE** has a higher percentage of people in good health (60.0%) than the Welsh average (56.1%)

## IN FLINTSHIRE:

- 89.9% of 4 year olds in **FLINTSHIRE** are up to date with their vaccinations.
- Uptake of Bowel screening is 56.7%; below the 60% target but above the Wales average (55.7%)
- Uptake of Cervical screening is 77.4% - which is above the 70% target
- Uptake of AAA screening is 80.4%, which is above the national target (80%)
- 69.7% of adults in **FLINTSHIRE** do not meet physical activity guidelines
- 34.2% of mothers continue to breastfeed at 10 days



## SPOTLIGHT ON NORTH EAST FLINTSHIRE



**NORTH EAST FLINTSHIRE** achieved the flu uptake target in 2018/19

**NORTH EAST FLINTSHIRE** Locality exceeded:

- the 95% target for the 6 in 1 vaccinations before a child's first birthday (96.5%);
- 2nd MMR by age 5 (96.4%)
- However, the 2nd MMR by age 16 is below the target (91.2%)



# THE MENTAL HEALTH OF PEOPLE IN NORTH EAST FLINTSHIRE

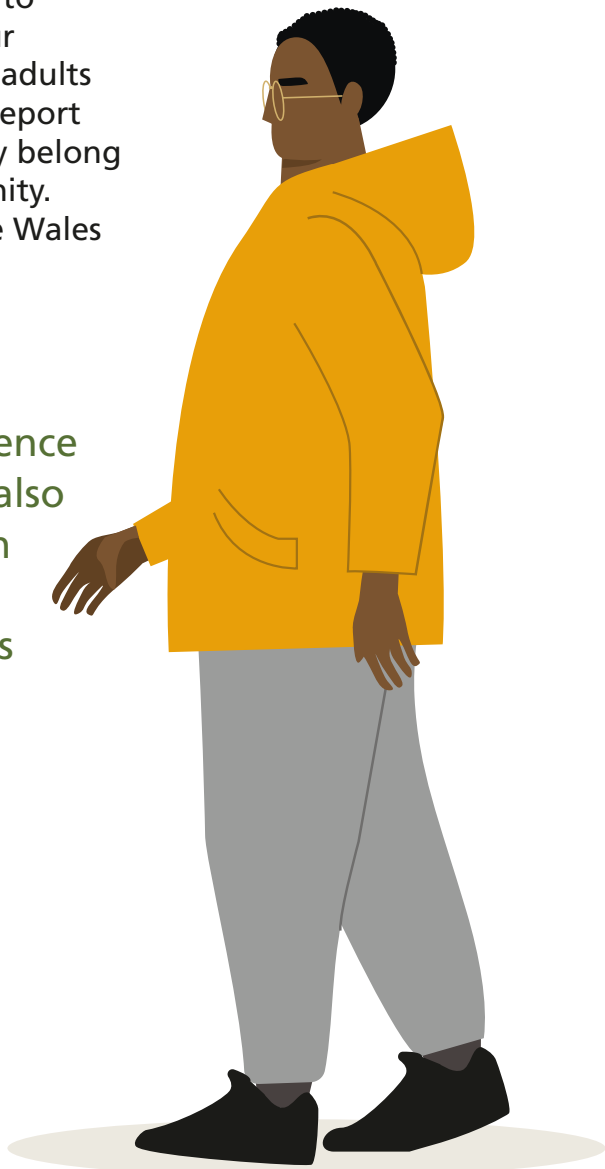
The average mental well-being score for **FLINTSHIRE** is 53.5 compared to the Wales average of 51.4 and the BCUHB average of 52.3. The higher the score the better the mental health.

Life satisfaction for working age adults in **FLINTSHIRE** is 85.6% - this is above the BCUHB (83.3%) and Wales average (81.8%)

Life satisfaction for older adults in **FLINTSHIRE** is 85.7%, which is slightly lower than the BCUHB average (86.8%) but higher than the Wales average (84.7%)

A sense of community and 'belonging' is strongly related to health-behaviour change. 56% of adults in **FLINTSHIRE** report feeling that they belong to their community. This is above the Wales average (52.2%)

Social isolation can reduce independence and damage mental health, but can also lead to problems with physical health if services such as GPs, dentists and active leisure and social opportunities are inaccessible. Loneliness in **NORTH EAST FLINTSHIRE** is a significant issue.



Despite this, **FLINTSHIRE** has the highest % of adults reporting they feel lonely (17%) which is above the Wales average (15%)

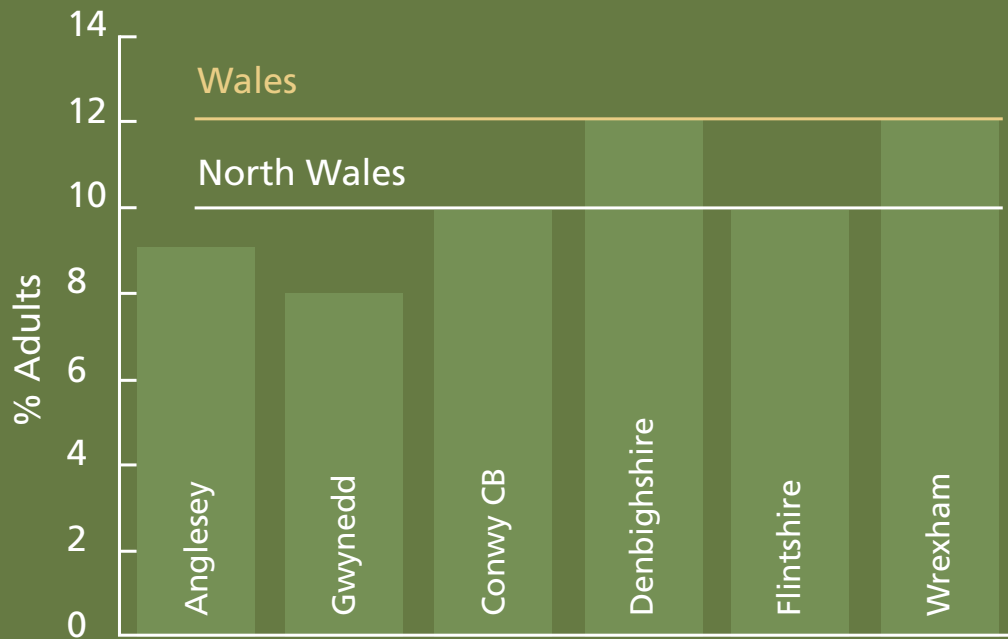
Shotton in **NORTH EAST FLINTSHIRE** is amongst the highest MSOAs in terms of predicted risk of loneliness amongst usual residents

There are (12.9%) people aged 65 and over living alone in **FLINTSHIRE**. This is below the Wales (13.7%) and the rest of the BCUHB region (14.9%)

**FLINTSHIRE** has a suicide rate of 11.3 per 100,000, compared to the Wales average of 9.2

0.71% of adults in **NORTH EAST FLINTSHIRE** receive mental health support from their GP.

% of adults (aged 16+) reporting being currently treated for a mental illness



# LIVING WITH A LONG-TERM CONDITION IN NORTH EAST FLINTSHIRE

**FLINTSHIRE** has a large population of people aged over 65, with population projections suggesting substantial and continued growth in the number of older people.

Increasing numbers of older people is likely to lead to an increasing number of people experiencing age related problems such as, chronic physical and sensory diseases, dementia and falls, all of which have a potential negative impact of people’s overall well-being.

The predicted number of people aged 65 and over, living with dementia in **FLINTSHIRE** is 2,374. This is set to rise to around 3,817 by 2040

The gap in employment rate for those with a long-term health condition (8.7%) is statistically significantly lower than the Wales average (14%) and is the second lowest in North Wales

There are 113 severely sight impaired people in **FLINTSHIRE** aged 18-64 years, and 257 aged over 65 years

There are 863 physical/sensory disabled people without a visual impairment aged between 18-64 years, and 2370 aged over 65 years

23.7% of working age people in **FLINTSHIRE** are Equality Act (EA) core or work-limiting disabled

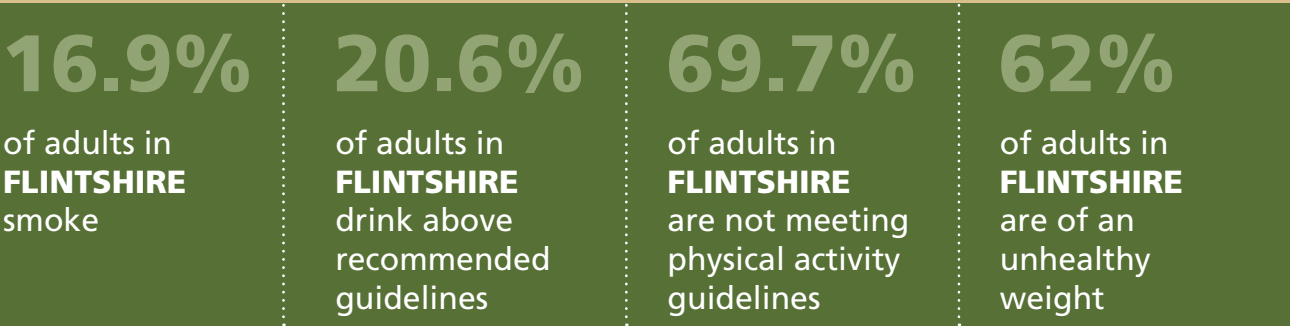
0.49% of the population of **NORTH EAST FLINTSHIRE** are predicted to live with dementia



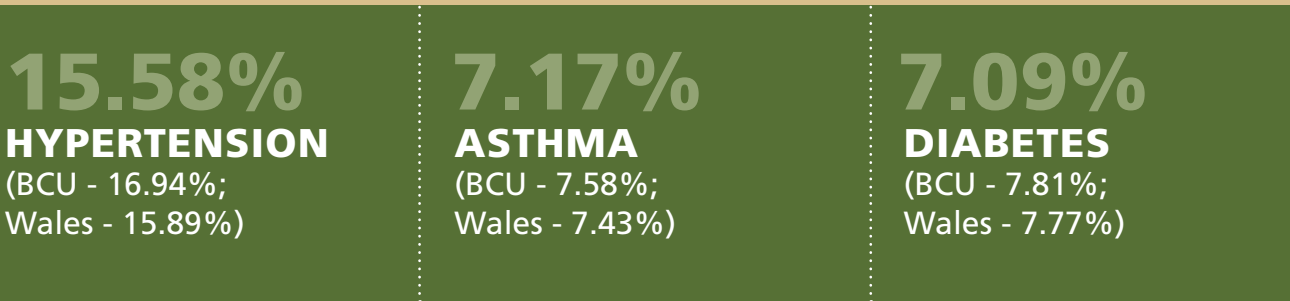
# NORTH EAST FLINTSHIRE



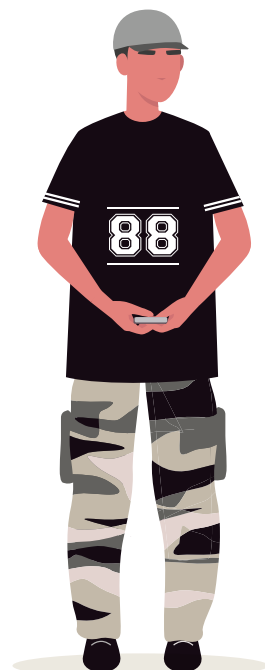
## Top 4 lifestyle issues contributing to the top 3 chronic conditions



## The most prevalent chronic conditions in NORTH EAST FLINTSHIRE are:



CHRONIC CONDITION	NORTH EAST FLINTSHIRE (%)	BCU (%)	WALES (%)
Coronary Heart Disease	3.64	3.79	3.61
COPD	2.27	2.71	2.38
Atrial Fibrillation	2.22	2.57	2.43
Heart Failure	1.04	1.15	1.11
Cancer	3.14	3.71	3.28
Stroke	1.77	2.17	2.17
Epilepsy	0.82	0.95	0.97
Osteoporosis	0.30	0.71	0.64



# PEOPLE'S INVOLVEMENT WITH HEALTH & CARE SERVICES IN NORTH EAST FLINTSHIRE

In Flintshire...

- Hospital admissions for cancer have risen
- Admissions for cardiovascular disease (1,295 are below the BCUHB average (1,641) and the Wales average (1,695))
- The number of emergency admissions for respiratory conditions (1,661) is below the BCU average (1,676) and the Wales average (1,770)
- The total number of emergency admissions for **FLINTSHIRE** (11,267) is below the BCUHB (11,972) and the Wales average (12,354)
- Despite **FLINTSHIRE'S** ageing population, the rate of hip fractures in those aged 65 and over is better in **FLINTSHIRE** compared to Wales (634.6 per 100,000 population)
- There are estimated to be 19,777 people who provide unpaid care in **FLINTSHIRE**
- There were 520 children receiving care and support in 2019
- 34.5 per 100,000 population of children were on the child protection register



# 11,361

**FLINTSHIRE** is estimated to have 11,361 adults aged 65+ who are unable to manage at least one self-care activity. This trend is set to increase by 2035, to 16,265 people

## 3,965 ADULTS

In **FLINTSHIRE**, 3,965 adults receive 8,041 social care services.

## 65+ YEARS

2,915 adults are aged over 65 years. 5,656 services are received by adults over 65 years of age

## 85+ YEARS

1,365 adults are aged over 85 years. 2,610 services are received by adults over 85 years

## 3,327 ADULTS

received support from the Information, Advice and Assistance service in 2018/19

## 85.14 YEARS

The average age of adults entering residential care in 2018/19 was 85.14 years

## 792.79 DAYS

Adults spent on average 792.79 days in residential care in 2018/19

## 4,187 ASSESSMENTS

There were 4,187 assessments for care and support in 2018/19

## 1,148 PEOPLE

Of which 1,148 led to a care plan

## 135 ADULTS

used care homes (without nursing) in 2019/20

## 594 ADULTS

used care homes (without nursing) in 2018/19

## 1,204 ADULTS

received domiciliary care in 2018/19

# PEOPLE'S EXPERIENCES OF HEALTH & CARE SERVICES IN NORTH EAST FLINTSHIRE

In Flintshire...



498  
ASSESSMENTS

for care and support for informal carers undertaken in 2018/19 in **FLINTSHIRE**.

23%

In 2020 23% of children receiving care and support in **FLINTSHIRE**, had a disability

478  
SUPPORTED

Of these 478 led to a support plan

25%

In 2020 25% of children receiving care had problems with mental health problems

555  
CHILDREN

In 2020 there 555 children receiving care and support in **FLINTSHIRE**.



99%

In 2020 99% of children receiving care and support had up-to-date health surveillance checks



## Locality Pen Profiles: Data Source List

Data Description	Data Source
ABOUT THE LOCALITY	
Population size by Local Authority	StatsWales
Population size by age	
Population projections	Public Health Wales Observatory
Ethnicity	StatsWales
Number of people who speak Welsh	National Survey for Wales
Number of people who identify as LGB	Office for National Statistics
Community assets	Primary Care IMPTs
LIFE IN THE LOCALITY	
Number of people who are unemployed	StatsWales
Number of children who live in poverty	Public Health Outcomes Framework
Number of people living in fuel poverty	National Social Care Data Set for Wales
Number of people without central heating	Census 2011
Welsh Index of Multiple Deprivation	Public Health Wales Observatory
Number of adults who experience hunger	University of Sheffield, Food Insecurity Map
Number of adults who struggle to eat enough food	
Number of adults who are worried about not having enough to eat	
Number of people who felt their home best supports their well-being	StatsWales
% housing assessments free from category one hazards	Public Health Wales Observatory
Number of households that are unintentionally homeless	StatsWales
Number of people renting from social landlord	Census 2011
Number of households that don't have a car or van	
Number of pensioner only households	



Data Description	Data Source
THE PHYSICAL HEALTH OF PEOPLE IN THE LOCALITY	
Smoking in adults aged 16 years and over	National Survey for Wales
% adults (age 16 years and over) who report drinking above recommended guidelines	
Working age adults of a healthy weight	Public Health Outcomes Framework
Adults eating five fruit or vegetable portions a day	StatsWales
Physical activity in adults aged 16 years and over	National Survey for Wales
% children aged 4 years, up to date with routine vaccinations	Public Health Wales
Life expectancy by gender	StatsWales
Healthy life expectancy at birth, males and females	Public Health Wales Outcomes Framework
% children who report being in good health	
Cervical Screening	Public Health Wales Screening Division
Bowel Screening Uptake	
Abdominal Aortic Aneurysm screening coverage/uptake	
Uptake of MMR vaccine	Cluster IMTP
% breastfeeding at 10 days	Public Health Wales Outcomes Framework
Working age adults (16 to 64 years) in good health	Public Health Wales Observatory
Older adults (65+ years old) in good health	
THE MENTAL HEALTH OF PEOPLE IN THE LOCALITY	
Mental well-being among adults, age-standardized average	Public Health Wales Observatory
Life satisfaction among working age adults and older people	
% adults reporting they feel lonely	National Survey for Wales
Sense of community	Public Health Outcomes Framework
% of adults who report feeling that they belong to their local community	StatsWales
% people who use social care services who report feeling part of their local community	
% of people use who social care services who report being able to do what matters to them	
Number of people aged over 65 living alone	Census 2011
Number of patients in the mental health QOF disease register	QOF Database
Admissions to mental health facilities by local health board	StatsWales
Deaths from suicide, EASR per 100,000 population, all persons aged 10 years and over	Public Health Wales Observatory

Data Description	Data Source
<b>LIVING WITH A LONG-TERM CONDITION IN THE LOCALITY</b>	
Number of people who struggle with activities of daily living	StatsWales
Gap in employment for those with a long-term health condition	Public Health Wales Observatory
Predicted number of adults aged over 65 living with dementia	National Social Care Data Set for Wales
Number of patients in the dementia QOF disease register	QOF Database
% people of working age who are EA core or work-limited disabled	Office for National Statistics
Number of physical/sensory disabled people without visual impairment	StatsWales
Number of severely sight-impaired people	National Social Care Data Set for Wales
% people with a limiting long-term illness	
Percentage of patients registered with a chronic condition	QOF Database
<b>PEOPLE'S INVOLVEMENT WITH HEALTH AND CARE SERVICES IN THE LOCALITY</b>	
Cancer admissions, EASR per 100,000 population	Health Maps Wales
Cardiovascular disease admissions, EASR per 100,000 population	
Respiratory Emergency Admissions, EASR per 100,000 population	
Emergency Admissions, mean length of stay (days) all persons	
Hip fractures among older people (65 years and over)	Public Health Outcomes Framework
Hospital admissions due to falls	Public Health Wales Observatory
Provision of unpaid care	Census 2011
% people satisfied with their ability to get to/access the facilities and services they need	StatsWales
Number of children receiving care and support	
% children receiving care and support with a disability	National Social Care Data Set for Wales
% children receiving care and support with mental health problems	
% children receiving care and support with up-to-date child health surveillance checks	
Number of assessments of need for support for carers undertaken during the year	
Number of assessments of need for support for carers undertaken during the year that led to a support plan	
Number of adults receiving services, all persons by age group	StatsWales
Number of adults receiving support from the Information, Advice, Assistance service during the year	National Social Care Data Set for Wales
Number of people aged 65+ who are unable to manage at least one self-care activity	StatsWales

Data Description	Data Source
PEOPLE'S INVOLVEMENT WITH HEALTH AND CARE SERVICES IN THE LOCALITY (CONT.)	
Number of assessments of need for care and support undertaken during the year	National Social Care Data Set for Wales
Number of assessments of need for care and support undertaken during the year that led to a care plan	
Number of services received by adults during the year	
Number of adults supported during the year	
Number of adult care home (with nursing) services received by adults aged 65+ during the year	
Number of adult care home (without nursing) services received by adults aged 65+ during the year	
Number of domiciliary care services received by adults aged 65+ during the year	
PEOPLE'S EXPERIENCES OF HEALTH AND CARE SERVICES IN THE LOCALITY	
Qualitative feedback on experiences of social care services	Annual Social Services Director's Report





If you would like further information about this Pen Profile,  
please email **Jo Flannery**, Senior Health Planning Manager,  
Betsi Cadwaladr University Health Board  
Email: [jo.flannery@wales.nhs.uk](mailto:jo.flannery@wales.nhs.uk)