

Community Services Transformation

NORTH DENBIGHSHIRE

Locality Needs Assessment 2021-22



GIG
CYMRU
NHS
WALES

Bwrdd Iechyd Prifysgol
Betsi Cadwaladr
University Health Board

Cyngor
sir ddinbych
denbighshire
County Council



CYDWEITHREDFA GWELLA GWASANAETHAU
GOFAL A LLESANT **GOGLEDD CYMRU**

NORTH WALES SOCIAL CARE AND WELL-BEING
SERVICES IMPROVEMENT COLLABORATIVE



CONTENTS

INTRODUCTION	3	THE MENTAL HEALTH OF PEOPLE IN NORTH DENBIGHSHIRE.....	16-17
DENBIGHSHIRE AS A VILLAGE OF 100 PEOPLE		LIVING WITH A LONG-TERM CONDITION IN NORTH DENBIGHSHIRE.....	18-19
OUR POPULATION	4-7	PEOPLE’S INVOLVEMENT WITH HEALTH & CARE SERVICES IN NORTH DENBIGHSHIRE.....	20-21
IN OUR VILLAGE	8-9	PEOPLE’S EXPERIENCES OF HEALTH & CARE SERVICES IN NORTH DENBIGHSHIRE	22
ABOUT NORTH DENBIGHSHIRE	10-11	WHAT ARE PEOPLE TELLING US ABOUT THEIR NEEDS?	23
LIFE IN NORTH DENBIGHSHIRE	12-13	LOCALITY PEN PROFILES: DATA SOURCE LIST	24-27
THE PHYSICAL HEALTH OF PEOPLE IN NORTH DENBIGHSHIRE.....	14		
SPOTLIGHT ON NORTH DENBIGHSHIRE	15		

INTRODUCTION

Locality Pen Profiles have been developed as part of the North Wales Regional Partnership Board’s Community Services Transformation Programme, and are intended to support the development of place-based strategic planning and commissioning for health and care, across the region.

A Pen Profile has been developed for each of the **14 integrated health and social care localities** in North Wales. A Locality is defined as

▯▯
A geographically bound area, which brings together all local services involved in the delivery of health and social care services for the area. A locality serves a population of between 25,000 and 100,000 people.▯▯

Our localities are based largely on GP cluster boundaries.

Locality Pen Profiles bring together data and insights from different agencies to build up a rounded picture of the needs and strengths of different communities at a very local, granular level. These insights are being used to help inform health and social care priorities for localities/clusters.

This data will also be used on an ongoing basis to adjust priorities and enable partners to hold one another to account for delivering their ambitions.

The Locality Pen Profiles developed by the Community Services Transformation programme are very much a work in progress, and will continue to evolve and grow as the range and type of information we have available at a more granular, locality footprint, increases. Nonetheless, they represent a significant step in realising our collective ambition to plan and deliver care and support in response to the needs of our local communities.

DENBIGHSHIRE

AS A VILLAGE OF 100 PEOPLE

OUR POPULATION

In our village...

AGE



18
people are aged between
0-15 years



95,696

Is our usually resident population
in **DENBIGHSHIRE** in 2019.
In our village of 100, each person
represents **956 people**



aged **65 years+**
Increase
NEXT
20 YEARS

The number of
people aged
over 65 years
is expected to
increase over the
next 20 years



24
people are aged
65 years +

15 people
aged
65 years +
live alone 

HEALTH & WELLBEING

Good health



72 Adults
are in good
health

Service use



3 Adults
receive a
service from
social care

59 Older
people are in
good health



2 Of whom,
are aged over
65 years



 **9** Adults are unable
to manage at least one
self-care activity

DENBIGHSHIRE

AS A VILLAGE OF 100 PEOPLE

OUR POPULATION

In our village...



4 People are from a minority ethnic group

LANGUAGE

Cymraeg

30

people speak Welsh



ETHNICITY

WIDER DETERMINANTS OF HEALTH

Child poverty

Of the 100 children in our village...

25

are living in poverty



Sense of community

55 Adults feel part of their community

Loneliness

12 Adults feel lonely



Unemployment

27

Adults are unemployed

44

Adults with a disability



LIFESTYLE BEHAVIOURS

Healthy weight

44

Adults are a healthy weight

68

Children are a healthy weight

Physically active

37

Adults are physically inactive



Nutrition

17

Adults eat 5 portions of fruit and veg a day

Smoking

14

Adults smoke

Alcohol

14

Adults drink above recommended guidelines

MENTAL HEALTH & DISABILITY

Mental Health

2

Adults receive support with their mental health



Learning disability

1

Person is registered as having a learning disability

NORTH DENBIGHSHIRE

AS A VILLAGE OF 100 PEOPLE

In our village...

HEALTH & WELL-BEING



3

People have
Arterial
Fibrillation

1

Person
has
osteoporosis

5

People
have Coronary
Heart Disease

1

Person
has rheumatoid
arthritis

1

Person has
heart failure

4

people
have COPD

17

People have
hypertension

8

people have
asthma



9

People
have
diabetes

2

People
have had
a stroke

8

people
are obese

1

Person
has epilepsy

0

People are
receiving
palliative care

1

Person
has dementia

4

People
have cancer

1

Person receives
support for their
mental health

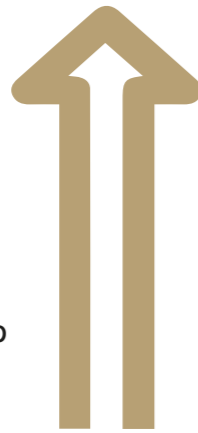


ABOUT NORTH DENBIGHSHIRE

Of the 95,696 people living in Denbighshire, approximately 61,000 live in the **NORTH DENBIGHSHIRE** locality. **NORTH DENBIGHSHIRE** covers the coastal towns of Prestatyn to Rhyl, with pockets of significant deprivation and an influx of tourists during peak holiday periods.

The people...

The % of the North Wales population is expected to increase by 6.7% between 2011 and 2036. All Local Authorities, including Denbighshire will see a sharp increase in the numbers of people over 85 years of age



6.7%
North Wales
Population
Increase
**NEXT
25 YEARS**



The GP list size of **NORTH DENBIGHSHIRE** is 60,787

60,787

Small increase

DENBIGHSHIRE's population is projected to increase by 2.7% (around 2,500 people) between 2014 and 2039

7,500

The number of people aged 75+ is projected to increase by 7,500



4,800

The number of people aged 18-74 is predicted to decrease by 4,800



4.4%

of **DENBIGHSHIRE** are from a minority ethnic background

30%

of adults in **DENBIGHSHIRE** speak Welsh. This is above the Wales average (18%) and the BCUHB average (33%)

Cymraeg



1.3%

of adults in **DENBIGHSHIRE** identify as LGB

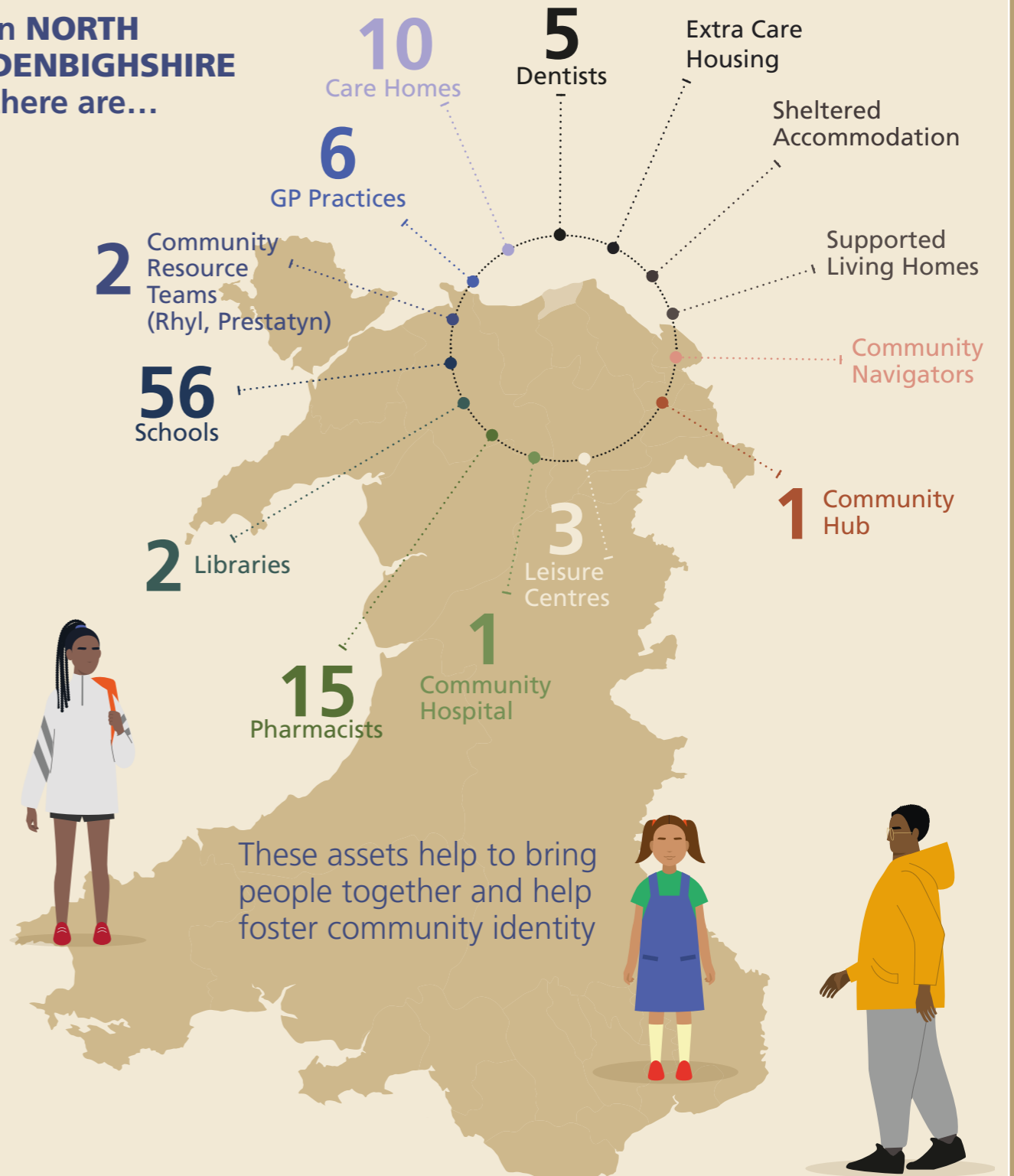
NORTH DENBIGHSHIRE IS MADE UP OF THE FOLLOWING ELECTORAL WARDS...

Dyserth, Prestatyn Central, Prestatyn East, Prestatyn Meliden, Prestatyn North, Prestatyn South West, Rhuddlan, Rhyl East, Rhyl South, Rhyl South East, Rhyl South West, Rhyl

Its assets...

There are a range of important assets within the locality that not only help to deliver community health and social care, but which also support the health and well-being of the whole population.

In NORTH DENBIGHSHIRE there are...



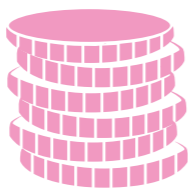
LIFE IN NORTH DENBIGHSHIRE

Health is crucially linked with education; good health and wellbeing are associated with improved attendance and attainment at school, which in turn leads to improved employment opportunities and broader career options.

By the age of 30 those with the highest levels of education are expected to live four years longer than those with the lowest levels of education. Education is the single most important modifiable social determinant of health, it is both potentiating and protective, it can trigger healthier futures, mitigate social stressors and provide access to employment opportunities and life chances that could protect individuals from later-life disadvantage.

73.2%

The percentage of adults in DENBIGHSHIRE who are in employment is 73.2% - below the BCUHB average (75.3%) and on a par with the Wales average (73.8%)



12 DENBIGHSHIRE LSOAs feature in the 10% most deprived in Wales for access to services



25%

of children in DENBIGHSHIRE live in poverty - this is below the Welsh average



21%

of households in DENBIGHSHIRE don't have a car or van. This is above the BCUHB average (20.3%)
Not having access to a car or van impacts on the availability of services to those without personal transport.

There are predicted to be

9,267

people living in fuel poverty in DENBIGHSHIRE

16%

of the DENBIGHSHIRE population live in the most deprived areas, DENBIGHSHIRE has some of the most deprived areas in Wales.



The rate of households unintentionally homeless and in priority need in DENBIGHSHIRE is 37.2 per 10,000. This is statistically significantly above the Wales average (22.5) and this the highest in North Wales

HOUSING ASSESSMENTS

The % of housing assessments which are free from category one hazards in DENBIGHSHIRE (57.3%) is below the Wales average (68.7%)

11.80%

of adults in DENBIGHSHIRE struggle to eat enough food

11.65%

of adults in DENBIGHSHIRE are worried about not having enough to eat.

4.95%

of adults in DENBIGHSHIRE experienced hunger because they did not have enough food

81%

of people in DENBIGHSHIRE felt that their home best supports their well-being

15.2%

The percentage of pensioner only households in DENBIGHSHIRE is 15.2% - this is above the BCUHB and Wales Averages



THE PHYSICAL HEALTH OF PEOPLE IN NORTH DENBIGHSHIRE

21% of the population of **NORTH DENBIGHSHIRE** Smoke - this is above the Wales average (17.4%) and the BCUHB average (17.6%)

18% of the adult population of **NORTH DENBIGHSHIRE** drink above recommended guidelines. This is lower than the Wales average (18.6) but slightly above the BCU average (27.8)

78% of adults in **NORTH DENBIGHSHIRE** do not eat the recommended 5 portions of fruit and veg

50% of adults in **NORTH DENBIGHSHIRE** do not meet physical activity guidelines

62% of people in **NORTH DENBIGHSHIRE** aged 16 and over are of an unhealthy weight

Life expectancy for Women in **DENBIGHSHIRE** is 81.4 years, although healthy life expectancy is 67.7 years. Women in **DENBIGHSHIRE** spend 83.2% of their life in good health

Life expectancy for Men in **DENBIGHSHIRE** is 78.1 years, although healthy life expectancy is 67.5 years. Men in **DENBIGHSHIRE** spend 86.5% of their life in good health

32% of children in **DENBIGHSHIRE** aged 5 are overweight or obese, significantly worse than the Welsh figure (26%)

95% of children in **DENBIGHSHIRE** report being in good/very good health

20% report having a long standing illness, and;

7% report having a limiting long standing illness



However....

80.8% of working age adults are in good health - above than the Wales average (76%) and BCUHB average (78.7%)

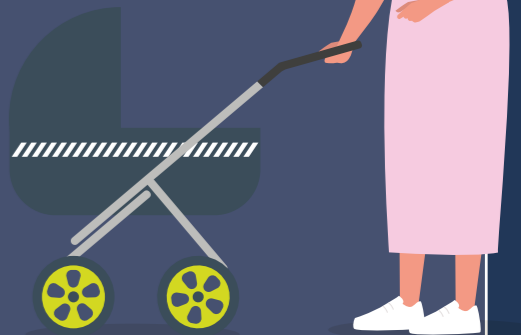
When it comes to people aged over 65 years of age in **DENBIGHSHIRE** has a higher percentage of people in good health (60.0%) than the Welsh average (56.1%)

DENBIGHSHIRE:

- **DENBIGHSHIRE** has the lowest percentage of children with 2 MMR vaccinations by age 16 years.
- 89.9% of 4 year olds in **DENBIGHSHIRE** are up to date with their vaccinations.
- Uptake of Bowel screening in **DENBIGHSHIRE** is 54.9%; below the 60% target
- Uptake of Cervical screening in **DENBIGHSHIRE** is 76.3% - which is above the 70% target
- Uptake of AAA screening in **DENBIGHSHIRE** is 81.2%
- 31.1% of mothers continue to breastfeed at 10 days



SPOTLIGHT ON NORTH DENBIGHSHIRE



- Uptake of Bowel screening in **NORTH DENBIGHSHIRE** is 53%; below the 60% target but above the Wales average (55.7%)
- Uptake of Cervical screening in **NORTH DENBIGHSHIRE** is 73% - which is above the 70% target
- Uptake of Breast screening in **NORTH DENBIGHSHIRE** is 68%
- 67% of people aged 65+ in **NORTH DENBIGHSHIRE** received the flu immunisation (target is 75%)
- 43% of people with a clinical risk in **NORTH DENBIGHSHIRE** received the flu immunisation (target is 55%)
- **NORTH DENBIGHSHIRE** has the lowest percentage of children up to date with vaccinations by age 4 and 5 years

THE MENTAL HEALTH OF PEOPLE IN NORTH DENBIGHSHIRE

The average mental well-being score for **DENBIGHSHIRE** is 51.6 compared to the Wales average of 51.4 and the BCUHB average of 52.3. The higher the score the better the mental health.

Life satisfaction for working age adults in **DENBIGHSHIRE** is 80% which is the lowest in North Wales, and below the Wales average (81.8%)

Social isolation can reduce independence and damage mental health, but can also lead to problems with physical health if services such as GPs, dentists and active leisure and social opportunities are inaccessible. Loneliness in **NORTH DENBIGHSHIRE** is a significant issue.

Despite this, life satisfaction for older adults in **DENBIGHSHIRE** is 86.7%, and is above the Wales average (84.7%)

DENBIGHSHIRE has a suicide rate of 10.2 per 100,000, compared to the Wales average of 12, and BCU average of 11.5



A sense of community and 'belonging' is strongly related to health-behaviour change. 54.8% of adults in **DENBIGHSHIRE** report feeling that they belong to their community. This is above the Wales average (52.2%)

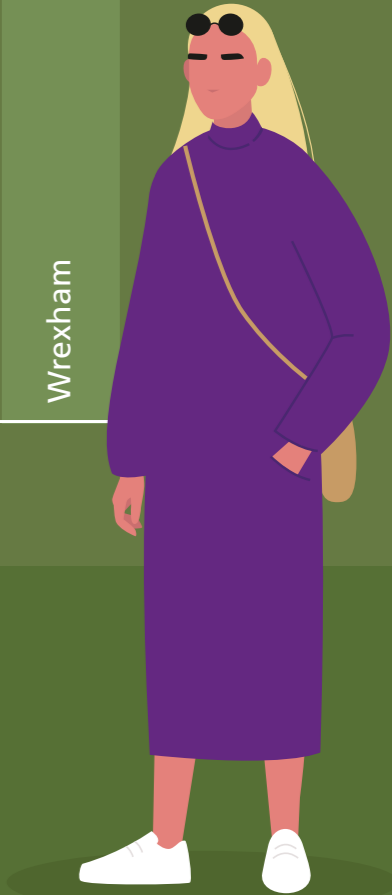
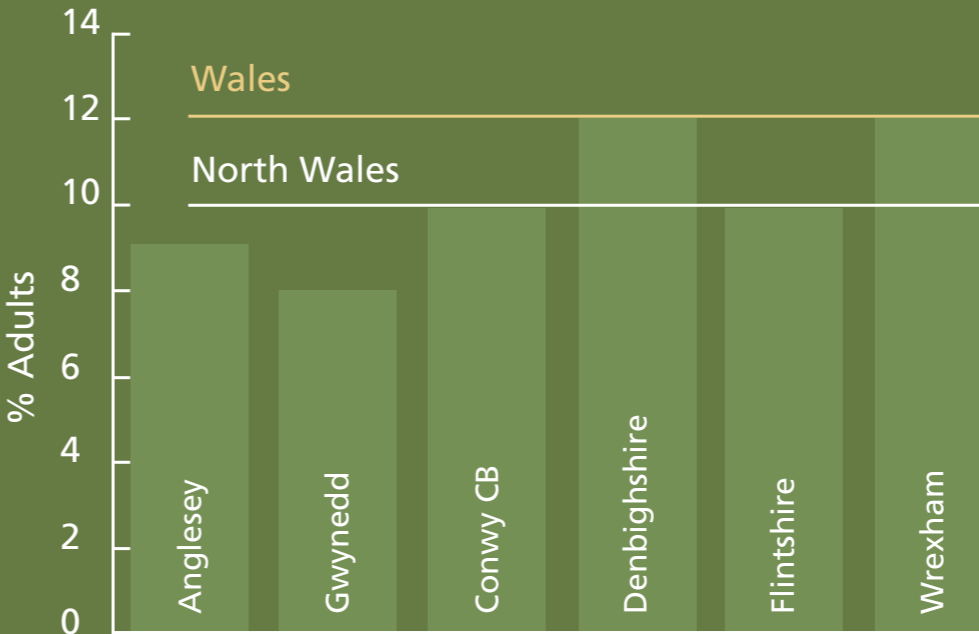
Despite this, **DENBIGHSHIRE** has joint lowest % of adults reporting they feel lonely (12%) which is below the Wales average (15%)

There are (15.2%) people aged 65 and over living alone in **DENBIGHSHIRE**. This is above the Wales (13.7%) and the rest of the BCUHB region (14.9%)

Rhyl in **NORTH DENBIGHSHIRE** is amongst the highest MSOAs in terms of predicted risk of loneliness amongst usual residents

1.29% of adults in **NORTH DENBIGHSHIRE** receive mental health support from their GP

% of adults (aged 16+) reporting being currently treated for a mental illness



LIVING WITH A LONG-TERM CONDITION IN NORTH DENBIGHSHIRE

Denbighshire has a large population of people aged over 65, with population projections suggesting substantial and continued growth in the number of older people.

Increasing numbers of older people is likely to lead to an increasing number of people experiencing age related problems such as, chronic physical and sensory diseases, dementia and falls, all of which have a potential negative impact of people’s overall well-being

The predicted number of people aged 65 and over, living with dementia in **DENBIGHSHIRE** is 1,670. This is set to rise to around 2,735 by 2040



The gap in employment rate for those with a long-term health condition (15.6%) is statistically significantly lower than the Wales average (14%)

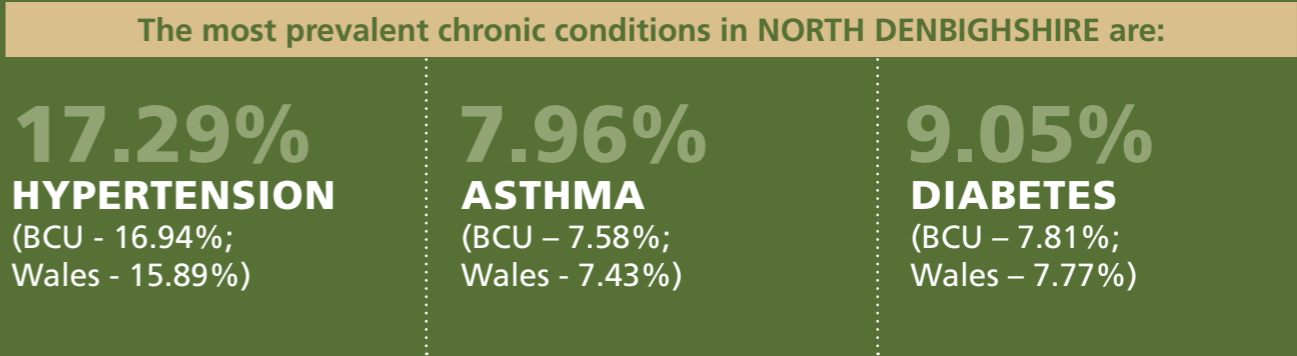
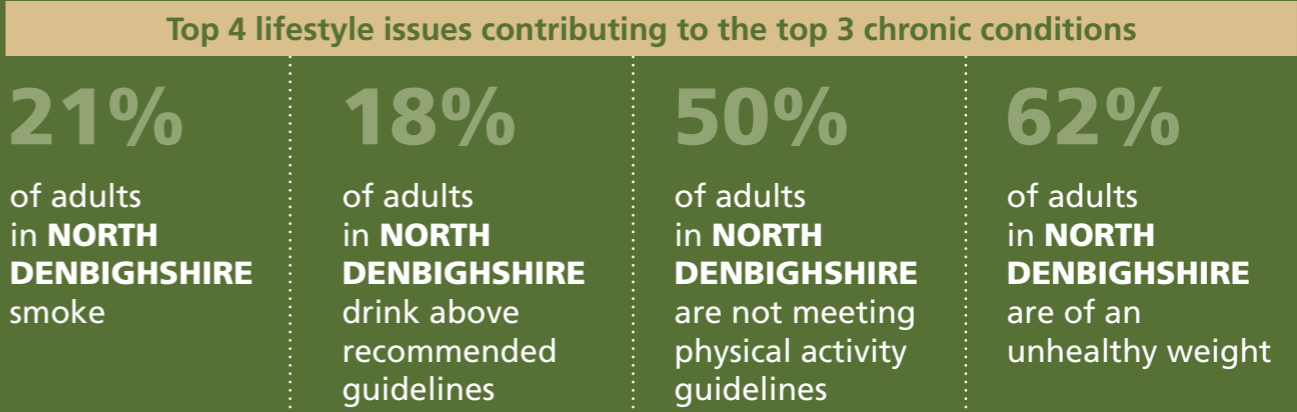
There are 28 severely sight impaired people in **DENBIGHSHIRE** aged 18-64 years, and 119 aged over 65 years

There are 41 physical/sensory disabled people without a visual impairment aged between 18-64 years, and 300 aged over 65 years

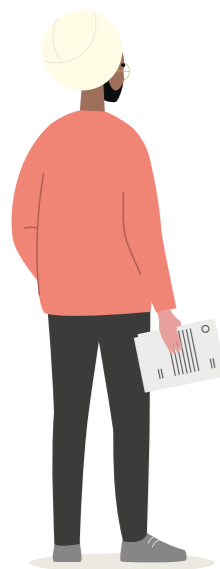
23.9% of working age people in **DENBIGHSHIRE** are Equality Act (EA) core or work-limiting disabled

1.08% of the population of **NORTH DENBIGHSHIRE** are predicted to live with dementia.

NORTH DENBIGHSHIRE



CHRONIC CONDITION	NORTH DENBIGHSHIRE (%)	BCU (%)	WALES (%)
Coronary Heart Disease	4.54	3.79	3.61
COPD	3.59	2.71	2.38
Atrial Fibrillation	2.68	2.57	2.43
Heart Failure	1.21	1.15	1.11
Cancer	3.87	3.71	3.28
Stroke	2.22	2.17	2.17
Epilepsy	1.13	0.95	0.97
Osteoporosis	0.73	0.71	0.64



PEOPLE'S INVOLVEMENT WITH HEALTH & CARE SERVICES IN NORTH DENBIGHSHIRE

In Denbighshire...

- Hospital admissions for cancer fell but have started to rise again
- Admissions for cardiovascular disease (1,733) are above the BCUHB average (1,641) and the Wales average (1,695)
- The number of emergency admissions for respiratory conditions (1,913) is above the BCU average (1,676) and the Wales average (1,770)
- The total number of emergency admissions for **DENBIGHSHIRE** (14,161) is statistically significantly above the BCUHB (11,972) and the Wales average (12,354)
- The rate of hip fractures in those aged 65 and over is higher in **DENBIGHSHIRE** compared to Wales (624.6 per 100,000 population)
- There were 234 assessments for care and support for informal carers undertaken in 2018/19 in **DENBIGHSHIRE**. Of these 35 led to a support plan
- There were 420 children receiving care and support in 2019
- 47.4 per 100,000 population of children were on the child protection register
- In 2020 there 665 children receiving care and support in **DENBIGHSHIRE**
- In 2020 28% of children receiving care and support in **DENBIGHSHIRE**, had a disability
- In 2020 16% of children receiving care had problems with mental health problems
- In 2020 98% of children receiving care and support had up-to-date health surveillance checks



12,361

There are estimated to be 12,361 people who provide unpaid care in **DENBIGHSHIRE**

2,193 ADULTS

In **DENBIGHSHIRE**, 2,193 adults receive 2,872 social care services.

INCREASE

DENBIGHSHIRE is estimated to have 7,956 adults aged 65+ who are unable to manage at least one self-care activity. This trend is set to increase by 2035, to 10,895 people

65+ YEARS

1,620 adults are aged over 65 years. 2,078 services are received by adults over 65 years of age

1,850 ADULTS

There were 1,850 assessments for care and support in 2019/20

85+ YEARS

785 adults are aged over 85 years. 987 services are received by adults over 85 years

467 ADULTS

Of which 467 led to a care plan

1,561 ADULTS

received support from the Information, Advice and Assistance service in 2019/20

164 ADULTS

used residential homes in 2019/20



81 YEARS

The average age of adults entering residential care in 2019/20 was 81 years

562 ADULTS

used nursing homes in 2019/20

880 ADULTS

received domiciliary care in 2019/20

970 DAYS

In 2019/20 the average length of stay in all residential care for adults was 970 days

PEOPLE'S EXPERIENCES OF HEALTH & CARE SERVICES IN NORTH DENBIGHSHIRE

Responses to the Have Your Say Survey in 2017/18...

<p>61%</p> <p>of adults said they are happy with their quality of life.</p>	<p>96%</p> <p>felt they had been treated with dignity and respect</p>	<p>83%</p> <p>agreed it was their choice to live in a residential care home</p>
<p>43%</p> <p>of adults providing unpaid care said they are happy with their quality of life.</p>	<p>88%</p> <p>of adults felt they received the right information when they needed it.</p>	<p>86%</p> <p>were happy with the support they received from family, friends and neighbours</p>
<p>54%</p> <p>of adults felt they could do the things that are important to them.</p>	<p>89%</p> <p>were satisfied with the care and support received</p>	<p>98%</p> <p>were able to communicate in their language of choice</p>
<p>46%</p> <p>of adults providing unpaid care for a family member or friend felt they could do the things that are important to them.</p>	<p>86%</p> <p>of carers felt they received the right information and advice when they needed it</p>	<p>84%</p> <p>felt they were actively involved in decisions about how their care and support was provided</p>

WHAT ARE PEOPLE TELLING US ABOUT THEIR NEEDS?

- Availability of affordable transport to and from appointments and activities
- Availability of professional support from domiciliary care services & reablement
- Availability of casual support such as befriending, leisure outings & activities
- Hot meal delivery services
- Carer respite
- Help in early stages of dementia diagnosis for people and families





Locality Pen Profiles: Data Source List

Data Description	Data Source
ABOUT THE LOCALITY	
Population size by Local Authority	StatsWales
Population size by age	
Population projections	Public Health Wales Observatory
Ethnicity	StatsWales
Number of people who speak Welsh	National Survey for Wales
Number of people who identify as LGB	Office for National Statistics
Community assets	Primary Care IMPTs
LIFE IN THE LOCALITY	
Number of people who are unemployed	StatsWales
Number of children who live in poverty	Public Health Outcomes Framework
Number of people living in fuel poverty	National Social Care Data Set for Wales
Number of people without central heating	Census 2011
Welsh Index of Multiple Deprivation	Public Health Wales Observatory
Number of adults who experience hunger	University of Sheffield, Food Insecurity Map
Number of adults who struggle to eat enough food	
Number of adults who are worried about not having enough to eat	StatsWales
Number of people who felt their home best supports their well-being	
% housing assessments free from category one hazards	Public Health Wales Observatory
Number of households that are unintentionally homeless	StatsWales
Number of people renting from social landlord	Census 2011
Number of households that don't have a car or van	
Number of pensioner only households	

Data Description	Data Source
THE PHYSICAL HEALTH OF PEOPLE IN THE LOCALITY	
Smoking in adults aged 16 years and over	National Survey for Wales
% adults (age 16 years and over) who report drinking above recommended guidelines	
Working age adults of a healthy weight	Public Health Outcomes Framework
Adults eating five fruit or vegetable portions a day	StatsWales
Physical activity in adults aged 16 years and over	National Survey for Wales
% children aged 4 years, up to date with routine vaccinations	Public Health Wales
Life expectancy by gender	StatsWales
Healthy life expectancy at birth, males and females	Public Health Wales Outcomes Framework
% children who report being in good health	
Cervical Screening	Public Health Wales Screening Division
Bowel Screening Uptake	
Abdominal Aortic Aneurysm screening coverage/uptake	
Uptake of MMR vaccine	Cluster IMTP
% breastfeeding at 10 days	Public Health Wales Outcomes Framework
Working age adults (16 to 64 years) in good health	Public Health Wales Observatory
Older adults (65+ years old) in good health	
THE MENTAL HEALTH OF PEOPLE IN THE LOCALITY	
Mental well-being among adults, age-standardized average	Public Health Wales Observatory
Life satisfaction among working age adults and older people	
% adults reporting they feel lonely	National Survey for Wales
Sense of community	Public Health Outcomes Framework
% of adults who report feeling that they belong to their local community	StatsWales
% people who use social care services who report feeling part of their local community	
% of people use who social care services who report being able to do what matters to them	
Number of people aged over 65 living alone	Census 2011
Number of patients in the mental health QOF disease register	QOF Database
Admissions to mental health facilities by local health board	StatsWales
Deaths from suicide, EASR per 100,000 population, all persons aged 10 years and over	Public Health Wales Observatory

Data Description	Data Source
LIVING WITH A LONG-TERM CONDITION IN THE LOCALITY	
Number of people who struggle with activities of daily living	StatsWales
Gap in employment for those with a long-term health condition	Public Health Wales Observatory
Predicted number of adults aged over 65 living with dementia	National Social Care Data Set for Wales
Number of patients in the dementia QOF disease register	QOF Database
% people of working age who are EA core or work-limited disabled	Office for National Statistics
Number of physical/sensory disabled people without visual impairment	StatsWales
Number of severely sight-impaired people	National Social Care Data Set for Wales
% people with a limiting long-term illness	
Percentage of patients registered with a chronic condition	QOF Database

PEOPLE’S INVOLVEMENT WITH HEALTH AND CARE SERVICES IN THE LOCALITY	
Cancer admissions, EASR per 100,000 population	Health Maps Wales
Cardiovascular disease admissions, EASR per 100,000 population	
Respiratory Emergency Admissions, EASR per 100,000 population	
Emergency Admissions, mean length of stay (days) all persons	
Hip fractures among older people (65 years and over)	Public Health Outcomes Framework
Hospital admissions due to falls	Public Health Wales Observatory
Provision of unpaid care	Census 2011
% people satisfied with their ability to get to/access the facilities and services they need	StatsWales
Number of children receiving care and support	
% children receiving care and support with a disability	National Social Care Data Set for Wales
% children receiving care and support with mental health problems	
% children receiving care and support with up-to-date child health surveillance checks	
Number of assessments of need for support for carers undertaken during the year	
Number of assessments of need for support for carers undertaken during the year that led to a support plan	
Number of adults receiving services, all persons by age group	StatsWales
Number of adults receiving support from the Information, Advice, Assistance service during the year	National Social Care Data Set for Wales
Number of people aged 65+ who are unable to manage at least one self-care activity	StatsWales

Data Description	Data Source
PEOPLE’S INVOLVEMENT WITH HEALTH AND CARE SERVICES IN THE LOCALITY (CONT.)	
Number of assessments of need for care and support undertaken during the year	National Social Care Data Set for Wales
Number of assessments of need for care and support undertaken during the year that led to a care plan	
Number of services received by adults during the year	
Number of adults supported during the year	
Number of adult care home (with nursing) services received by adults aged 65+ during the year	
Number of adult care home (without nursing) services received by adults aged 65+ during the year	
Number of domiciliary care services received by adults aged 65+ during the year	
PEOPLE’S EXPERIENCES OF HEALTH AND CARE SERVICES IN THE LOCALITY	
Qualitative feedback on experiences of social care services	Annual Social Services Director’s Report



If you would like further information about this Pen Profile,
please email **Jo Flannery**, Senior Health Planning Manager,
Betsi Cadwaladr University Health Board
Email: jo.flannery@wales.nhs.uk