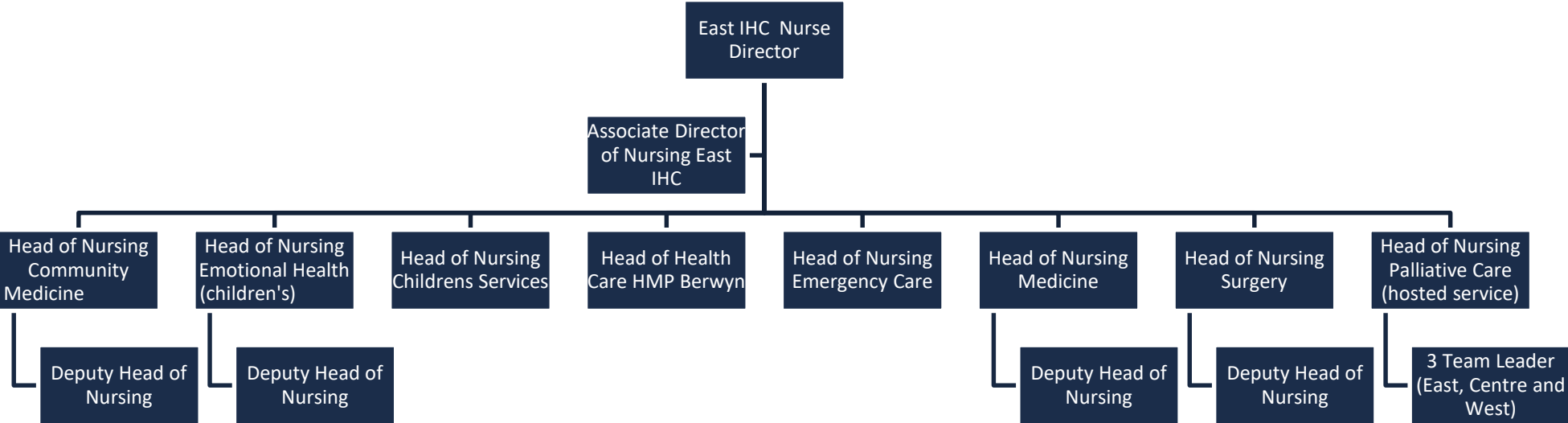


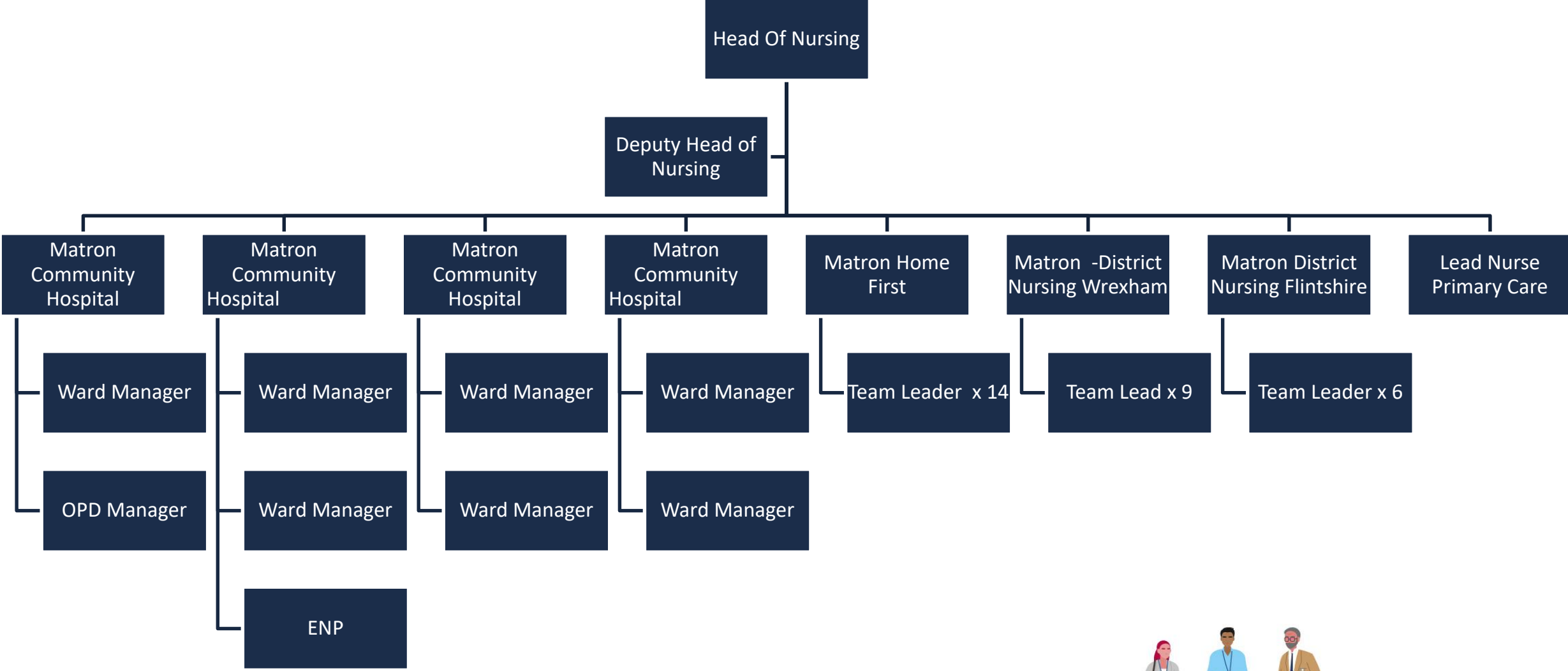
## East Integrated Health Community Senior Nursing Structure



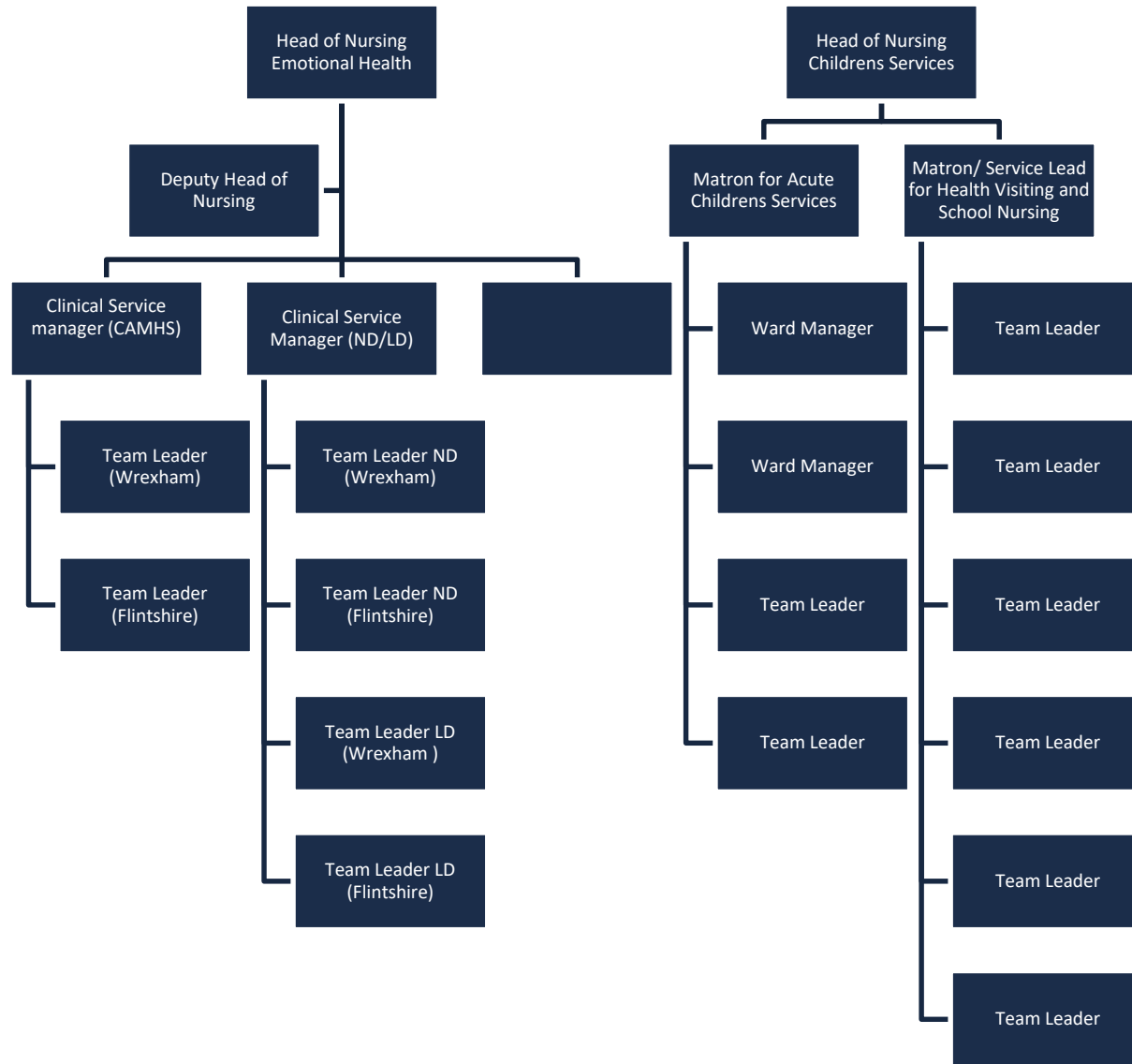
# East IHC Senior Nursing Team Structure



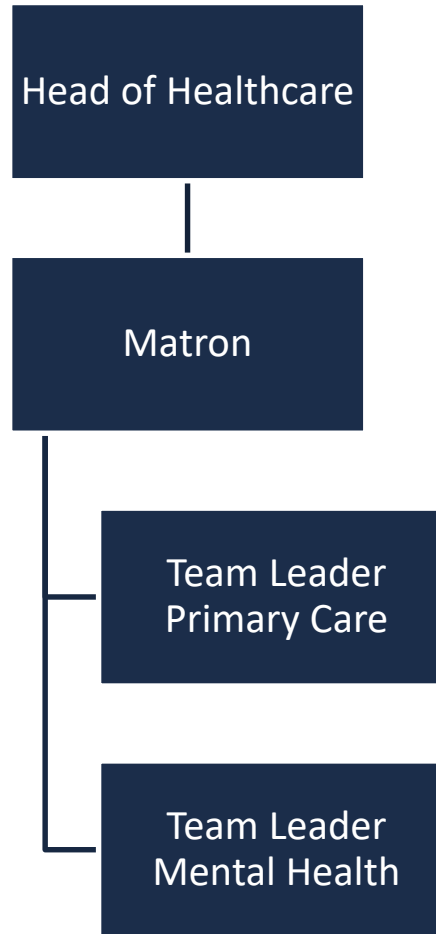
# Community Medicine (Including Primary Care)



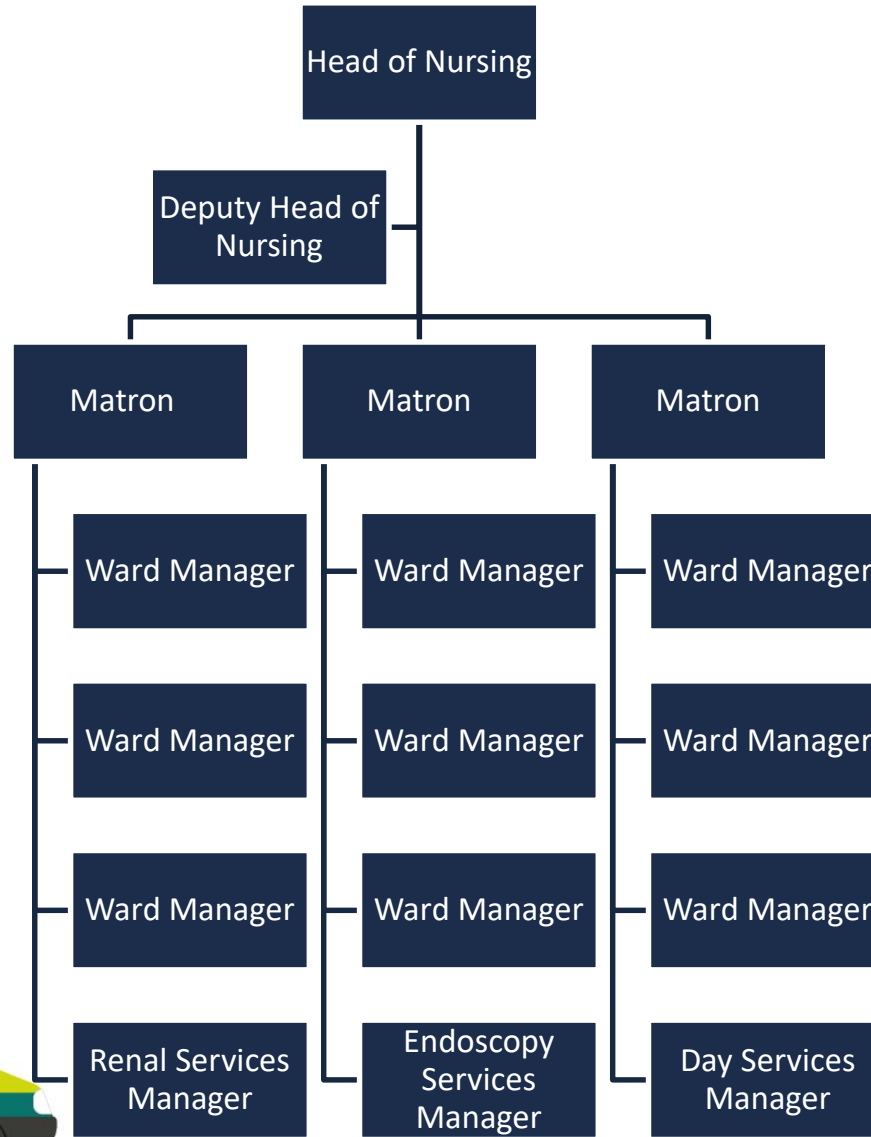
# Childrens Services



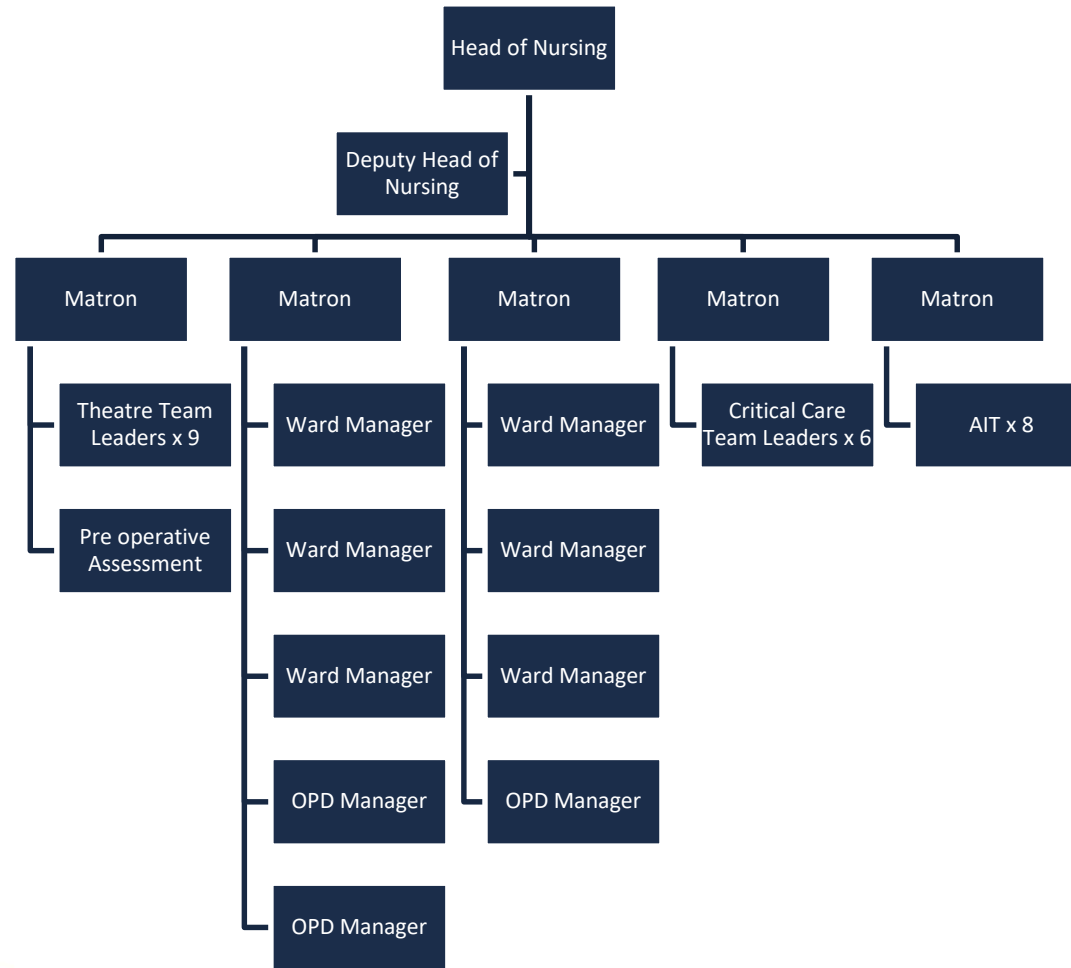
# HMP Berwyn



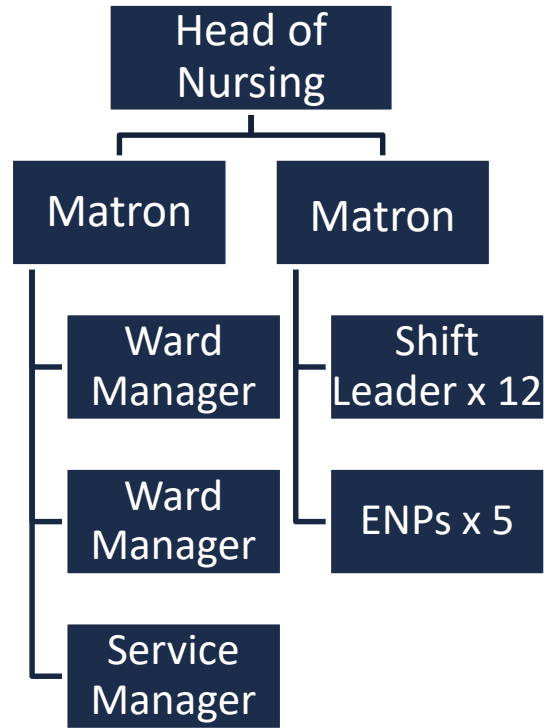
# Medicine



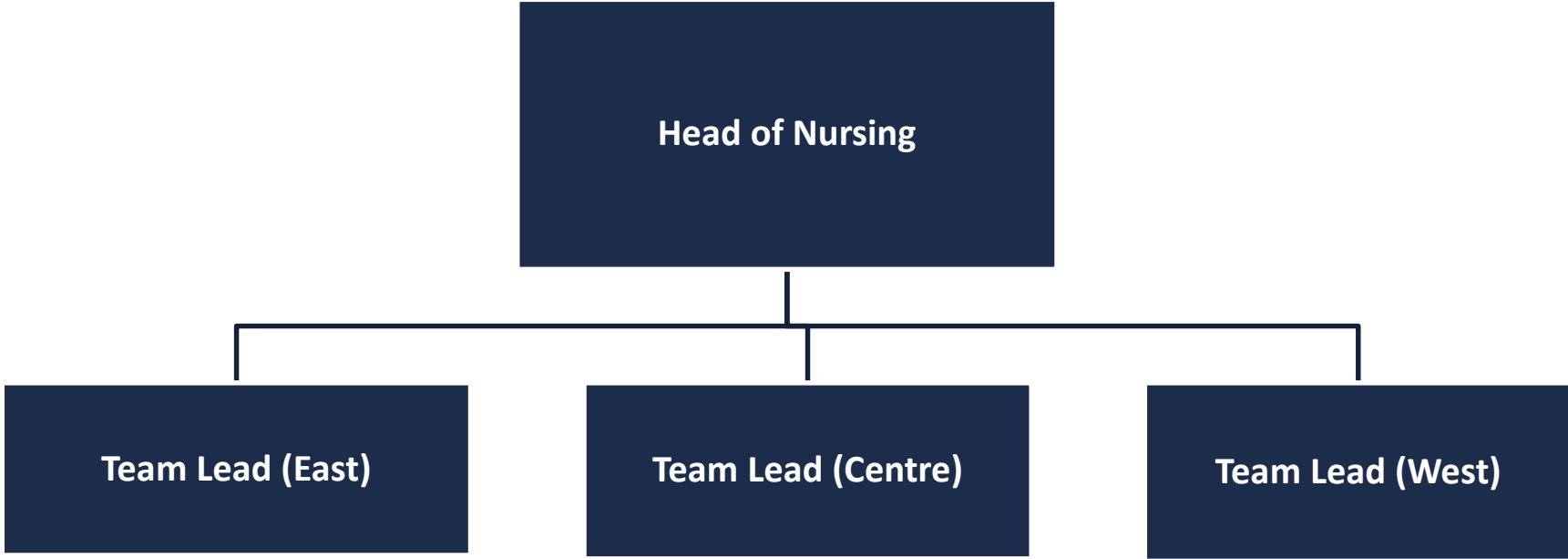
# Surgery



# Emergency Care



# Palliative Care (Hosted Service)



**EAST IHC PRIMARY CARE TEAM – JANUARY 2023**

