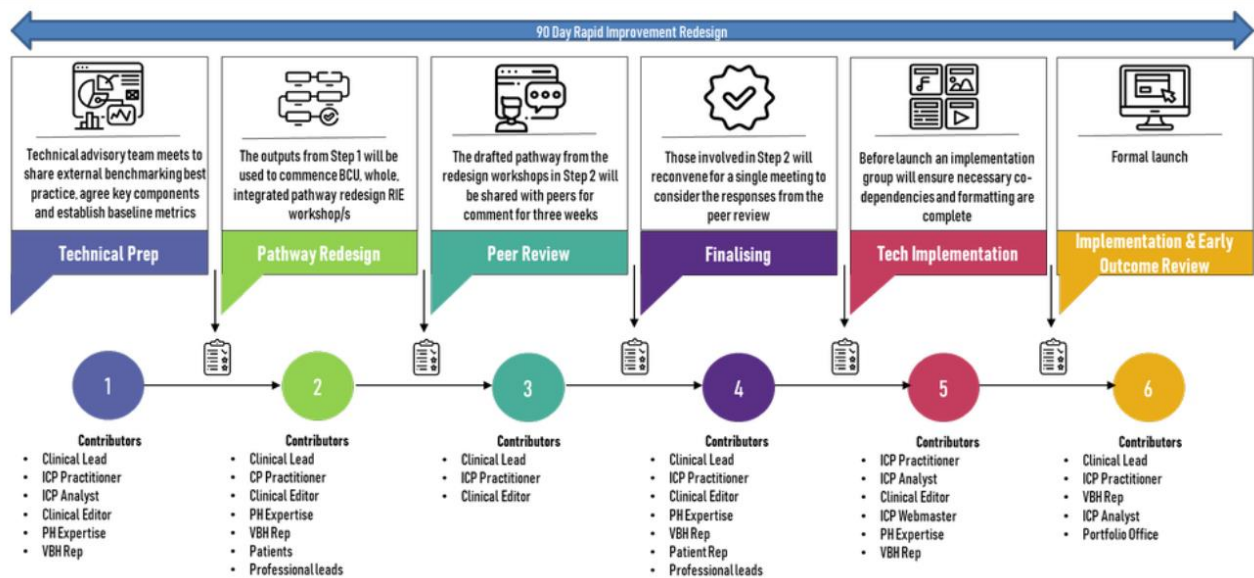


**End to end pathway approach, service user perspective and outcome focused,**  
(see diagram below)

**Worked Example – Support for Carers**

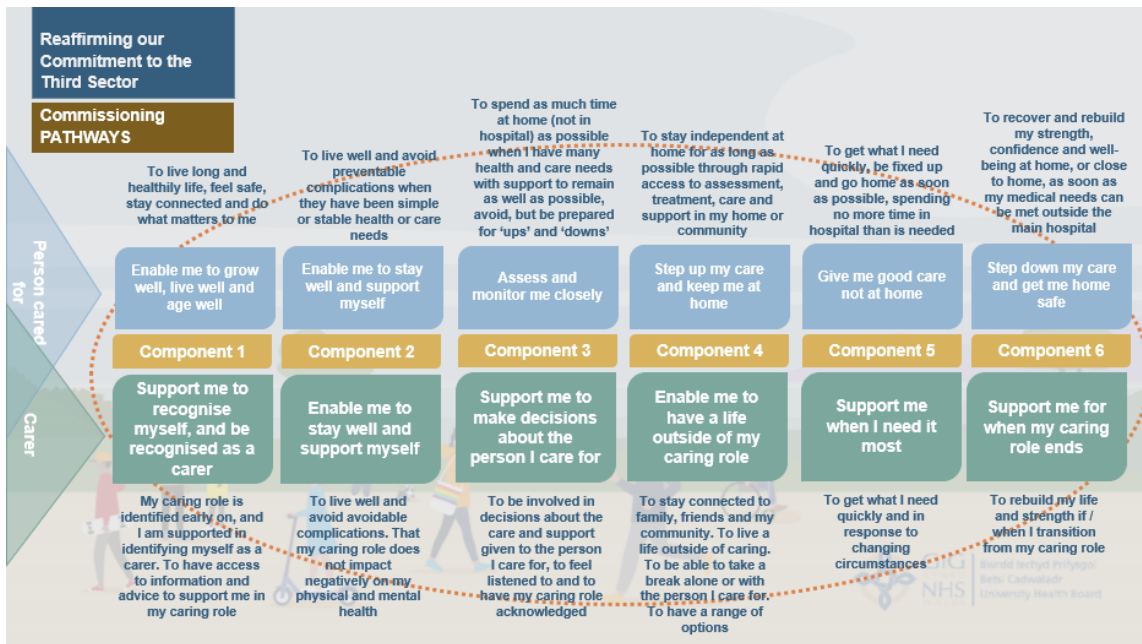
The BCUHB Transformation team is developing a pathway approach to facilitate the continuous improvement of pathways in every corner of the Health Board, *designed from the experiences of our patients* and *led by our clinical teams*, in order to deliver a step change in patient outcomes, experience and satisfaction.

Using the Betsi Pathways Methodology below, our pathways will be co-designed by a multidisciplinary team comprising of clinical and operational leads from across Primary, Community and Secondary care, along with our patients and third sector organisations.



Further work is underway to develop a model for the pathway components, to support the integrated pathway design that encompasses holistic, end to end support and care. The components of the pathway approach utilise existing pathway approaches, linking the clinically focused pathway within the National Clinical Framework with the broader person focused pathway of the Single Integrated Pathway for People.

An example of how the approach could work for developing care and support for carers is overleaf.



DRAFT