

Covid update report

QSE 7 September 2021

Current levels - community



Data to 24.08.21

Current levels - community

Local Authority	New cases	Cumulative cases	Last 7 days			Prior 7 days	
			Cases	Incidence*	Change**	Cases	Incidence*
Merthyr Tydfil	+70	8,236	454	752.6	↑ 324.9	258	427.7
Swansea	+209	24,703	1,685	682.2	↑ 34.0	1,601	648.2
Neath Port Talbot	+110	15,536	964	672.6	↑ 121.4	790	551.2
Carmarthenshire	+174	14,744	1,057	559.9	↑ 174.8	727	385.1
Rhondda Cynon Taf	+199	27,585	1,312	543.8	↑ 58.0	1,172	485.8
Conwy	+67	7,909	603	514.5	↑ 95.6	491	418.9
Denbighshire	+91	8,336	490	512.0	↑ 13.5	477	498.5
Caerphilly	+171	17,379	926	511.4	↑ 161.8	633	349.6
WALES	+2445	282,268	14,773	468.6	↑ 70.4	12,556	398.2
Gwynedd	+101	6,300	558	448.0	↑ 61.8	481	386.2
Pembrokeshire	+107	6,169	553	439.5	↑ 23.0	524	416.5
Newport	+110	15,235	663	428.6	↑ 32.3	613	396.3
Bridgend	+101	16,295	618	420.3	↑ 52.4	541	367.9
BC UHB	+487	56,175	2,875	411.0	↑ 41.1	2,588	369.9
Vale of Glamorgan	+143	10,463	542	405.7	↑ 59.1	463	346.6
Blaenau Gwent	+55	7,440	279	399.4	↑ 137.5	183	261.9
Cardiff	+273	34,743	1,430	389.7	↑ 86.4	1,113	303.3
Torfaen	+52	8,600	344	366.1	↑ 21.3	324	344.8
Ceredigion	+63	3,139	265	364.5	↑ 41.2	235	323.3
Isle of Anglesey	+33	3,605	255	364.1	↑ 91.4	191	272.7
Powys	+73	7,200	475	358.7	↑ 31.7	433	327.0
Flintshire	+119	14,284	544	348.5	↑ 41.6	479	306.9
Wrexham	+76	15,741	425	312.6	↓ 32.4	469	345.0
Monmouthshire	+42	6,045	270	285.4	↑ 10.5	260	274.9
Outside Wales	+59	14,042	460			496	
Unknown	+6	2,581	61			98	

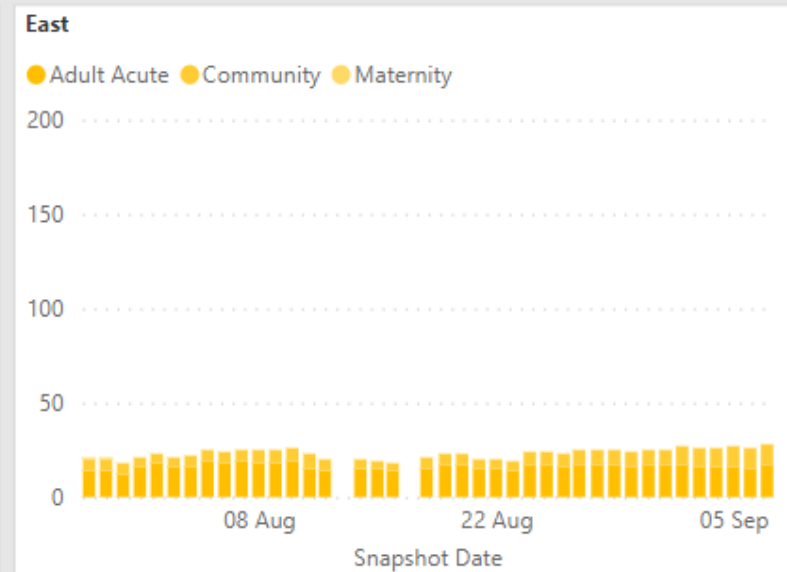
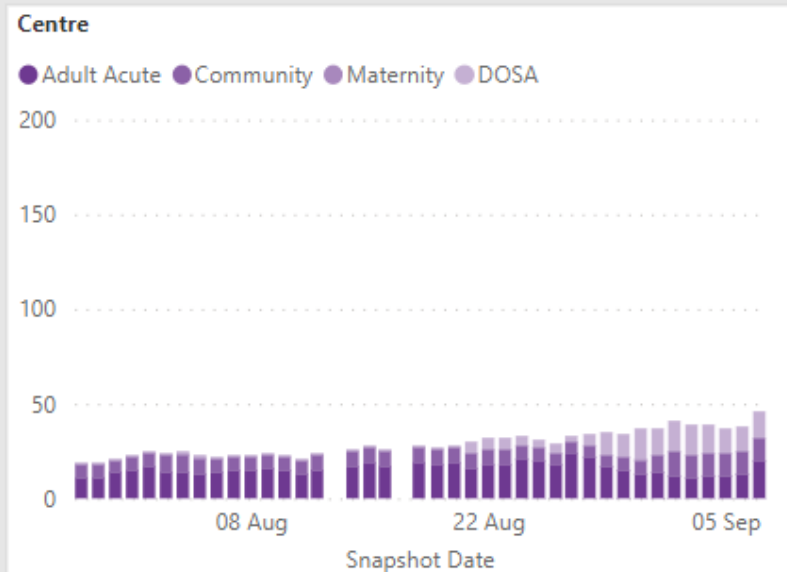
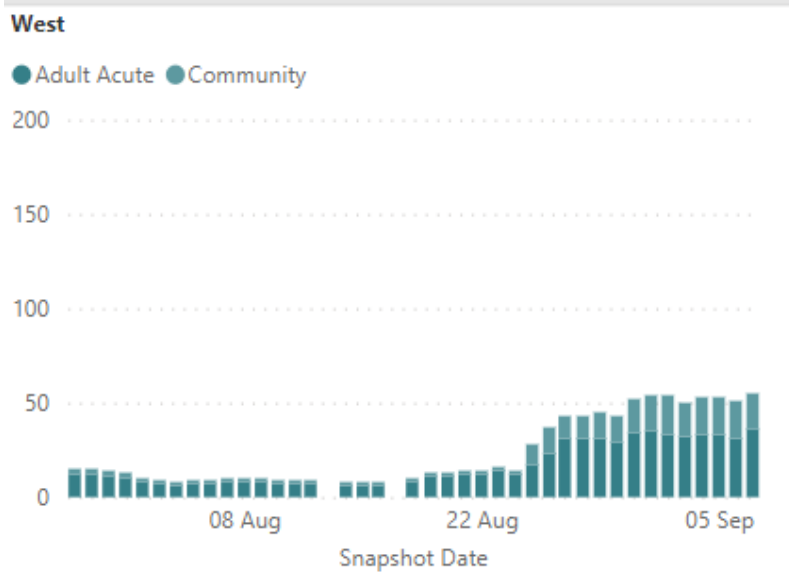
*Per 100,000 population. Incidence for the most recent 7 days may underestimate the true incidence due to samples still being processed and not yet authorised.

**Change in the actual number of cases per 100,000 compared to the previous 7 day period.

Last 7 days: Samples collected 27/08/2021 - 02/09/2021, with a lag of 4 days.

Prior 7 days: Samples collected 20/08/2021 - 26/08/2021

Current levels - inpatients



Critical Care	Covid19 occupancy	Non-Covid19 occupancy
Wrexham Maelor	2	6
Ysbyty Glan Clwyd	2	11
Ysbyty Gwynedd	3	5

129 inpatients of whom 39 were 15+ days post-positive test

Data to 04.09.21

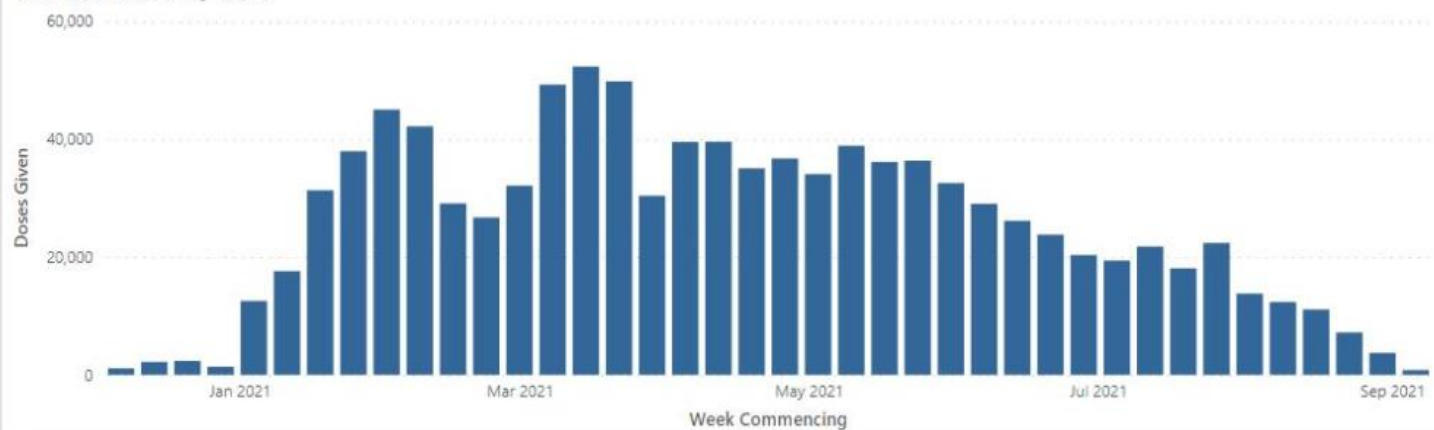
Vaccination update



Covid-19 | OFFICIAL SENSITIVE | Vaccination Summary

Last Updated: 05/09/2021

Vaccinations Given by Week



Total Doses Given

1,022,580

Pfizer Biontech

467,604

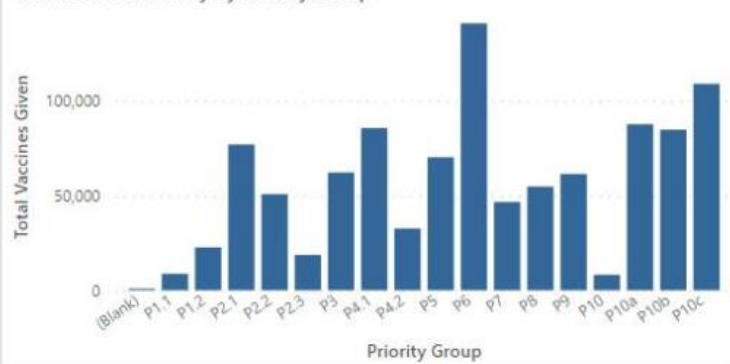
Astrazeneca

553,997

Other Vaccines

979

Vaccination Summary by Priority Group



Vaccination Summary by Local Authority

Local Authority	Vaccines Given Yesterday	Vaccines Given This Week	Vaccines Given This Month	Total Vaccines Given
1. Isle of Anglesey	2	2	103	103,657
2. Gwynedd	351	351	681	168,378
3. Conwy	83	83	540	173,864
4. Denbighshire	126	126	561	140,795
5. Flintshire	150	150	679	220,487
6. Wrexham	76	76	676	189,548
Other	19	19	111	25,851
Total	807	807	3,351	1,022,580

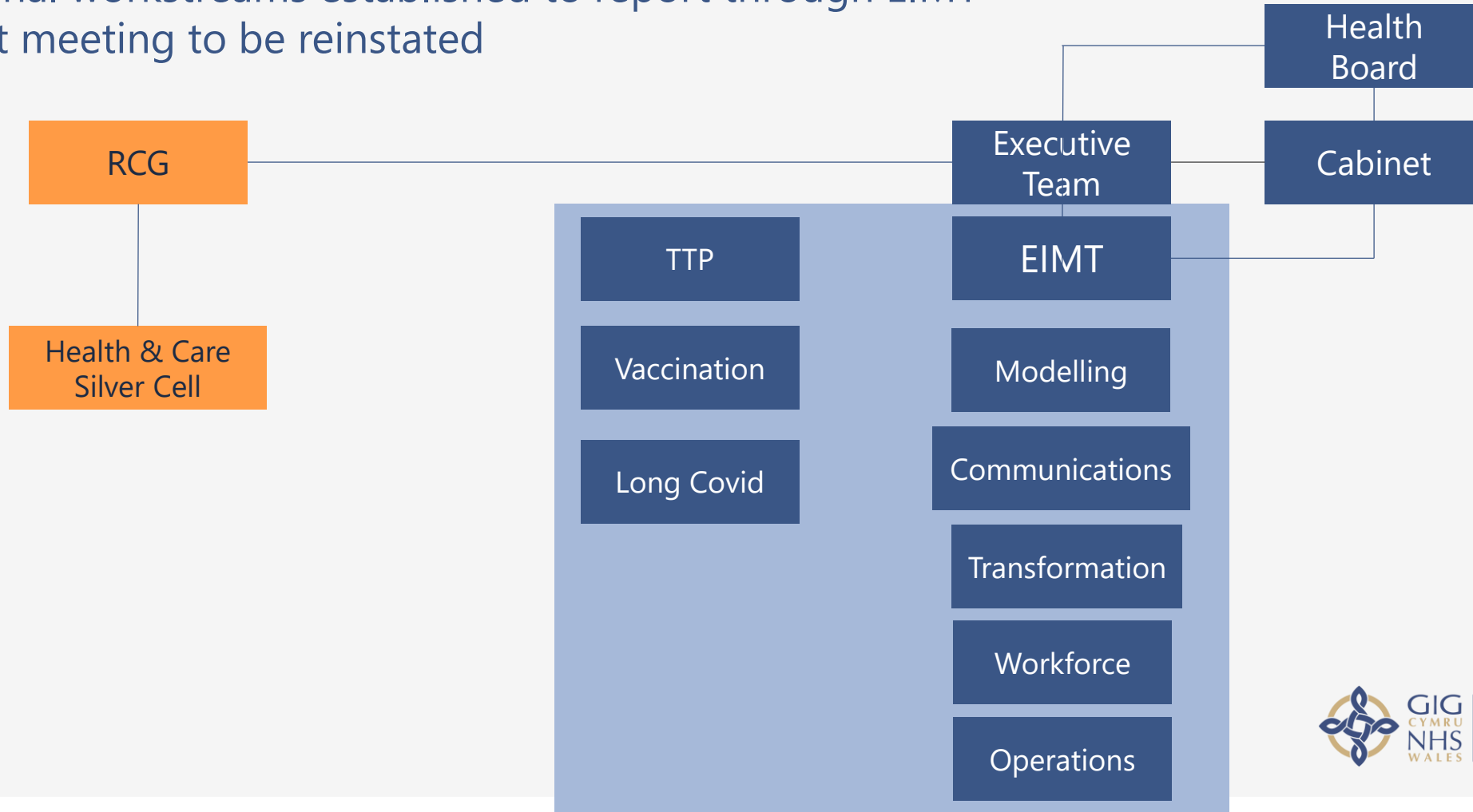


GIG
CYMRU
NHS
WALES

Bwrdd Iechyd Prifysgol
Betsi Cadwaladr
University Health Board

EIMT escalation

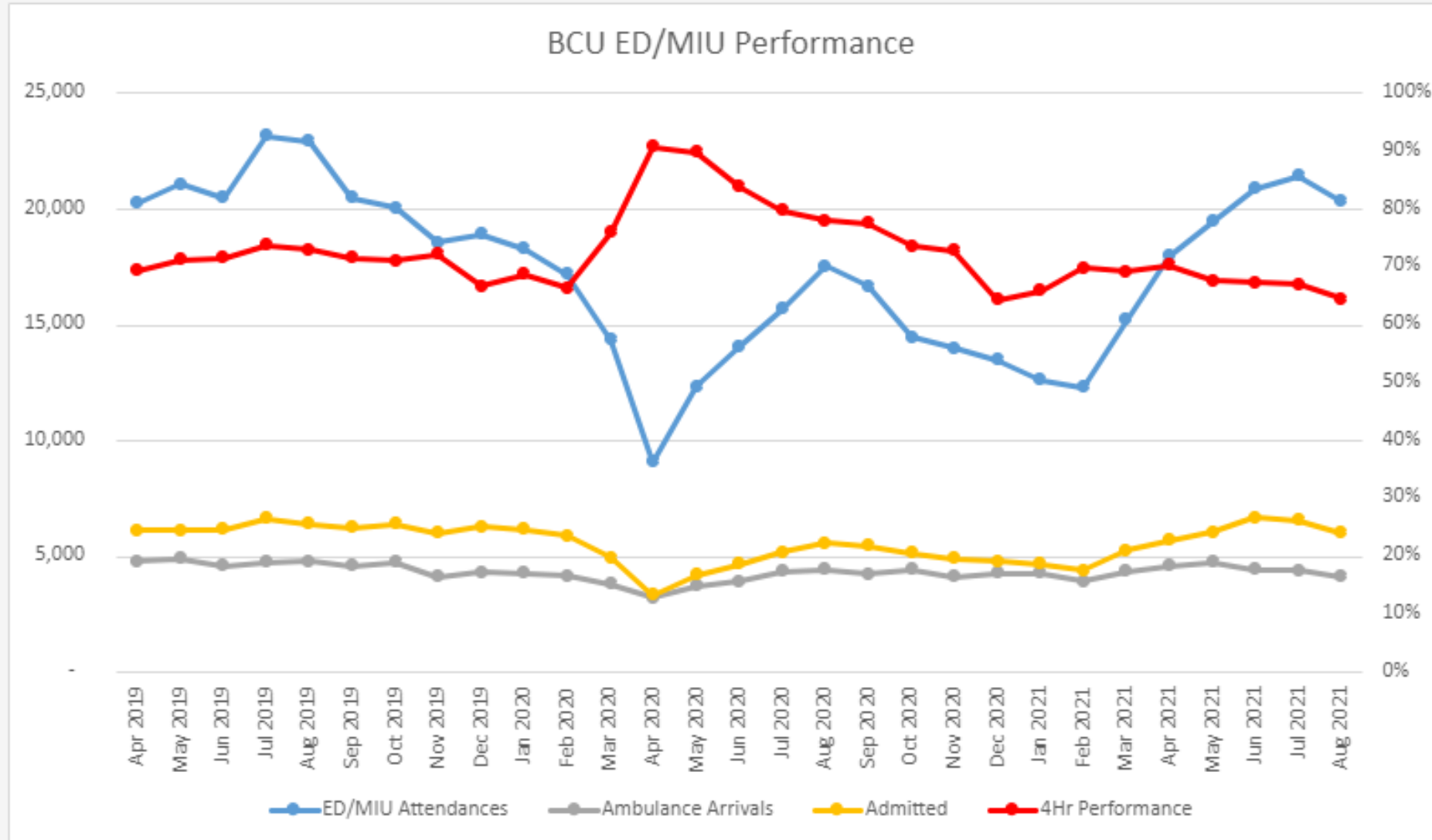
- Updated approach to command and control
- Additional workstreams established to report through EIMT
- Cabinet meeting to be reinstated



Unscheduled care – operational delivery

- Unscheduled care demand has been above predictions on many occasions over the last few weeks, with all the acute sites triggering a Level 4 during this time. Considerable impact of walk-ins, especially at WMH.
- Covid +ve – at 07/09/2021, 102 across acute and community sites, 8 of these in critical care
- Covid +ve in critical care – at 07/09/2021 – YG 3 pts, YGC 3 pts, WMH 2 pts, all treated for Covid only.
- Covid related deaths – 4 Covid-related deaths to date this month - 1 in YGC, 1 in Ysbyty Eryri, 2 at YG
- Outbreaks - YG - Aran, Tryfan and Hebog wards closed; Ysbyty Eryri (Padarn and Peblig Wards)
- Dolgellau Hospital designated as a 'red' site for use by West and Centre
- MFD – 313 MFDs across acute and area reported on 06/09/2021, the lowest number since 16/08/2021
- Staffing – staffing issues continue across all health economies, especially healthcare support workers
- Increasing number of red care homes due to Covid transmission impacting on the flow of patients from acute and community sites
- MIU – MIU Mold closed during the weekends, and Bryn Beryl MIU closed on Tuesdays over the summer due to staffing issues. Other MIUs having to close periodically at short notice due to staffing issues
- Women's service – any free any Gynae capacity across the acute sites being utilised where available
- MHLD – staffing continues to be tight in the West, with the Unit and 136 suite closed to admissions due to staffing, with patients diverted to Centre or East. Police fully aware

Unscheduled care performance



Care home pressures

- Care Homes – 38 red care homes: West 10, Centre 18, East 10.
- 13 have significant outbreaks (>10 cases)
- 6 have Incident Management Teams in place to manage situation
- Staffing concerns continue. A joint workshop is being held to discuss system pressures



GIG
CYMRU
NHS
WALES

Bwrdd Iechyd Prifysgol
Betsi Cadwaladr
University Health Board