

**Bundle BCU Planning, Population Health and Partnerships Committee 1 May 2025**

- 1 Supporting pack - Wales Eye Health Needs Assessment  
PP25.33.1 DRAFT EHNA (BCUHB edit) 050325



# DRAFT

## Wales Eye Health Needs Assessment

Date xx/xx/xxxx of issue

Last Updated xx/xx/xxxx

Next planned review xx/xx/xxxx

Version xx/xx

Next full version due xx/xx/xxxx

Compiled by the Eye Care Wales Committee

Prepared by Local Health Boards in Wales

# Contents

Executive Summary .....	3
1.0 Introduction .....	4
1.1 Our population’s eye health .....	4
1.2 NHS Wales .....	5
1.3 Wales General Ophthalmic Services .....	6
1.4 Welsh Index Multiple Deprivation .....	7
2.0 Health Boards.....	9
2.1 Aneurin Bevan University Health Board .....	9
2.2 Betsi Cadwalder University Health Board.....	9
2.2.1 Our population .....	9
2.2.2 Welsh Index Multiple Deprivation.....	
2.2.3 WGOS Service Provision.....	
2.2.4 Demand and unmet need for WGOS .....	
2.2.5 DDA compliance, loop systems etc .....	
2.2.6 Welsh language .....	
2.2.7 Workforce data.....	
2.2.8 Our Clusters.....	
2.3 Cardiff and the Vale University Health Board .....	9
2.4 Cwm Taf Morgannwg University Health Board.....	58
2.5 Hywel Dda University Health Board .....	58
2.6 Powys Teaching Health Board.....	58
2.7 Swansea bay University Health Board .....	58
References.....	58

## Executive Summary

To support the eye care needs of communities, in 2024 Welsh Government imposed a duty on Local Health Boards to conduct an eye health needs assessment every three years to ascertain the needs on the public in terms of eye care provision in both primary and secondary care. <sup>1</sup>

Higher levels of clinical services identified by the local eye care needs assessments will be delivered on a cluster level to bolster this provision. Taken together, the needs assessment combined with delivery on a cluster footprint will ensure that local population needs will be fully considered and delivered against.

This eye health needs assessment is prepared in accordance with Legislative Direction <sup>1</sup> relates to all of WGOS 1–5 provided under arrangements made by Local Health Boards and includes:

- (a) an assessment and summary of the provision of WGOS 1–5;
- (b) an assessment and summary of the demand for WGOS 1–5;
- (c) proposals for further ophthalmic services that may be needed to meet demand for those services;
- (d) an outline of the prevalence and impact of vision impairment in each Local Health Board’s area, including the aetiology, risk factors, demographics and public health and other consequences of vision impairment;
- (e) an analysis of the information provided by all data sources;
- (f) a map that identifies the premises at which any or all of WGOS 1–5 are provided in each Local Health Board’s area.

In preparing this eye health needs assessment, each Local Health Board

- (a) has regarded, in so far as it is practicable to do so, the following matters—
  - (i) the demography of its area,
  - (ii) any different needs of different localities within its area,
  - (iii) the ophthalmic services provided under arrangements with any neighbouring Local Health Board which affect the need for ophthalmic services in its area,

(iv) any other NHS services provided in or outside its area (which are not covered by sub-paragraph (iii)) which affect the need for ophthalmic services in its area,

(v) any relevant information provided to the Local Health Board either under the Legislative Directions or the 2023 Regulations, and

(b) has taken into account the likely future needs having regard to changes to the number of people in its area who will require any or all of WGOS 1–5.

## 1.0 Introduction

### 1.1 Our population's eye health

Wales spans an area of approximately 20,700 km<sup>2</sup> and has a population of roughly 3.1 million. It is served by seven distinct local health boards (LHBs). The boundaries of these LHBs vary significantly in size, from less than 500 km<sup>2</sup> for Cardiff & Vale University LHB to over 6,000 km<sup>2</sup> for Betsi Cadwaladr University LHB. The populations within these LHBs also differ, with Powys Teaching LHB housing around 134,500 residents and Betsi Cadwaladr University LHB accommodating approximately 692,000. The more urban and post-industrial regions represented by Aneurin Bevan, Cardiff & Vale University, Cwm Taf Morgannwg, and Swansea Bay University LHBs account for 60% of Wales' population, yet only cover 17% of its land area. In contrast, Powys Teaching, Betsi Cadwaladr University, and Hywel Dda LHBs are largely composed of rural areas.

In the UK (population circa 68.27 million), <sup>2</sup> approximately 1.93 million individuals are estimated to be living with vision impairment or blindness caused by conditions such as age-related macular degeneration (AMD), cataracts, diabetic eye disease, glaucoma, and uncorrected refractive errors. <sup>3</sup>

Vision impairment can significantly diminish quality of life by hindering a person's ability to carry out daily tasks, restricting mobility, and affecting independence. <sup>4-6</sup> Additionally, individuals of working age with vision impairment are less likely to be employed compared to their sighted counterparts. <sup>7,8</sup> These challenges can further limit a person's ability to engage with the world, leading to social isolation and feelings of loneliness.

Unsurprisingly, vision impairment imposes a substantial socioeconomic burden,<sup>9</sup> which was estimated at £15.8 billion in the UK in 2013.<sup>3</sup>

Wales is projected to see an ageing population over the next two decades, leading to a higher prevalence of age-related eye diseases. From 2023 to 2033, the number of individuals aged over 80 is expected to rise by 16.0%, and by 2043, this increase will reach 56%. By 2033, the anticipated changes in incidence and prevalence for various conditions are as follows:<sup>10</sup> By 2033, the anticipated changes in incidence and prevalence for various conditions are as follows:<sup>10</sup>

- Cataracts: incidence is expected to rise by 11% (see Fig. 5), with prevalence increasing by 12.5%
- Glaucoma: incidence is projected to increase by 11.7%, and prevalence by 13%
- Retinal diseases: incidence is anticipated to grow by 13%, with prevalence increasing by 12.6%

## 1.2 NHS Wales

NHS Wales is the public funded National Health Service of Wales providing healthcare to some 3 million people who live in the country. The Welsh Government sets the health care strategy and NHS in Wales delivers that strategy and services via the seven Local Health Boards, three NHS Trusts and two Special Health Authorities. The NHS has 5 core principles,<sup>11</sup>

- Putting quality and safety above all else,
- Integrating improvement into everyday working,
- Focusing on prevention, health improvement and inequality,
- Working in true partnerships and
- Valuing all that work for the NHS.

Key strategic drivers for NHS Wales include:

- *The Well-being of Future Generations (Wales) Act 2015*<sup>12</sup>

The Well-being of Future Generations (Wales) Act 2015 invites collaboration across services and sectors and with the individual to improve wellbeing and reduce demand on services.

Optometry Contract reform embedded collaboration of services and sectors. Optometrists and dispensing Opticians work closely with patients and other health care professionals to improve eye health and general health, ensuring preventative advice is given to improve wellbeing and reduce demand on secondary care.

- ***A Healthier Wales*** <sup>13</sup>

This policy encourages a more holistic approach to health and social care and supports the use of community-based services rather than secondary care where appropriate.

The quadruple aim outlines the use of a motivated workforce, the higher value of care being provided, the improved population health and wellbeing, and the improved quality and increased access to care.

- ***Future Approach for optometry services*** <sup>14</sup>

This transformation paper outlines the expectations of the Welsh Government for the delivery of eye care services over the next decade. To inform this approach, considerations have been made based on past and present experiences, as well as an analysis of current population access, demand, treatments, technologies, and outcomes.

### 1.3 Wales General Ophthalmic Services

Wales General Ophthalmic Services (WGOS) were introduced on 20 October 2023, with unification of the service architecture, governance and evaluation across Wales to provide care closer to home and ensure that people only attend hospital eye services when required. WGOS is a Primary Care Optometry service delivered from both fixed location premises in the community and closer to/in homes via mobile practices. WGOS is a tiered Service comprising of the following:

- WGOS 1: eye examinations and patient management plan.
- WGOS 2: made up of three bands:
  - Band 1 – Acute eye care and referrals for examination from another healthcare professional.
  - Band 2 - Further examinations following WGOS 1 to inform or prevent a referral.
  - Band 3 - Follow up examinations to WGOS 2 Band 1 and Cataract Post-operative Assessments.

- WGOS 3:
  - Assessments for those with low vision and providing low vision aids where appropriate, as well as holistically supporting the patient and providing rehabilitative support.
  - Certification of Vision Impairment for patients whose leading cause of vision loss is Dry Age-Related Macular Degeneration
- WGOS 4: examinations for patients who would previously have been referred to/or managed in the Hospital Eye Service (HES) instead remain in primary care for further enhanced assessment as part of an agreed referral refinement or monitoring pathway for patients:
  - with or with suspected medical retina conditions
  - with or with suspected glaucoma or ocular hypertension; and
  - who are at risk of retinopathy due to taking hydroxychloroquine or chloroquine
- WGOS 5: examinations in primary care for acute eye conditions that require management by an independent prescriber optometrist to reduce the need for onward referrals to Hospital Eye Services.
- NHS Optical vouchers: financial support for the provision of spectacles or contact lenses to patients in eligible categories determined by Welsh Government.

## 1.4 Welsh Index Multiple Deprivation

The Welsh Index of Multiple Deprivation (WIMD) is the Welsh Government's official measure of relative deprivation for small areas in Wales. It identifies areas with the highest concentrations of several different types of deprivation. Deprivation is the lack of access to opportunities and resources, which we might expect in our society. WIMD ranks all small areas in Wales from 1 (most deprived) to 1,909 (least deprived). It is a National Statistic produced by statisticians at the Welsh Government. Small areas are Census geographies called Lower-layer Super Output Areas (LSOAs).<sup>15</sup>

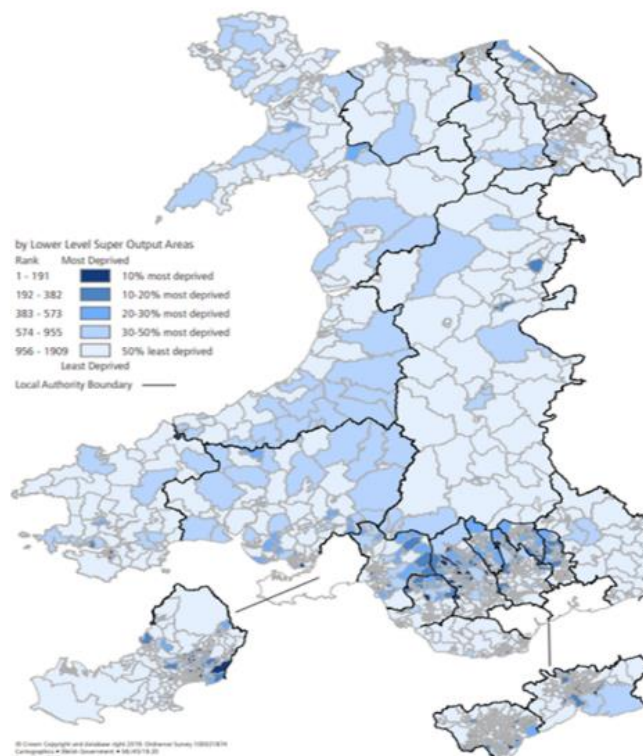
The full index is updated every 4 to 5 years. The most recent index was published in 2019. There are numerous indicators that feed into WIMD. Some of these are updated annually (when possible), some periodically, some only for the overall WIMD update and some only when census data becomes available.

The Welsh Index of Multiple Deprivation statistics look at:

- Income Deprivation
- Employment
- Health
- Education
- Access to Services
- Housing
- Community Safety
- Physical Environment

The health domain measures a lack of good health. The indicators are:

- People with a GP-recorded diagnosis of a Chronic condition (indirectly age-sex standardised)
- People with a GP-recorded diagnosis of a Mental health condition (indirectly age-sex standardised)
- Cancer Incidence (indirectly age-sex standardised)
- Limiting Long-Term Illness (indirectly age-sex standardised)
- Premature Death Rate (death of those under the age of 75)
- Children aged 4-5 who are obese
- Low Birth Weight, single births (live births less than 2.5kg)



The indicators above are age-sex standardised to adjust for the expected prevalence of disease within the underlying population. This allows the index to identify areas where health deprivation exists beyond the effect of age and sex.

The association between deprivation and health is clearly apparent across Wales especially in the post-industrial valley communities in South Wales. Here poorer health outcomes are significantly worse than Wales as a whole.

## 2.0 Health Boards

### 2.1 Aneurin Bevan University Health Board

### 2.2 Betsi Cadwaladr University Health Board

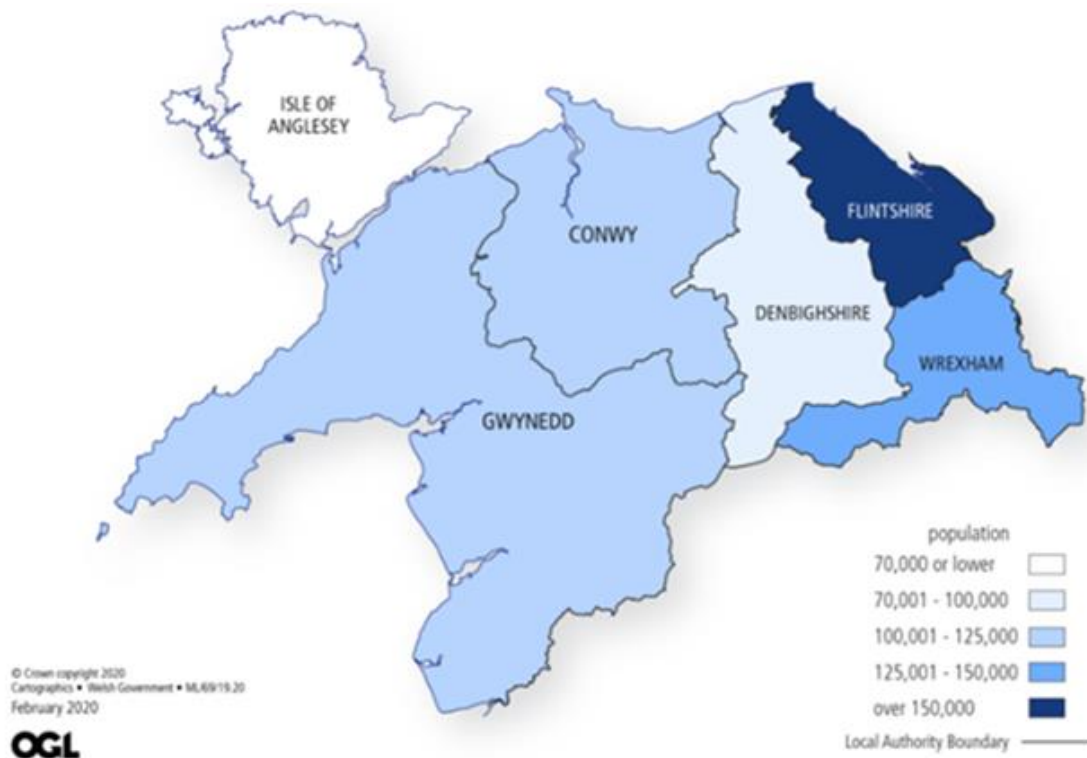
#### 2.2.1 Our population

Betsi Cadwaladr University Health Board is the largest health organisation in Wales, responsible for the delivery of health care services across the six unitary authorities of North Wales (Anglesey, Gwynedd, Conwy, Denbighshire, Flintshire and Wrexham).

North Wales has a population of approximately 700,000 across 2,500 square miles, with a density of 114 persons per square kilometre. Gwynedd is the most sparsely populated county with 49 persons per square kilometre.

The region is defined by coastland, rural areas particularly in the west, and more urban areas in the east. The mix of coastal resorts and mountainous areas are a strong draw for tourists and visitors. There is a stronger sense of Welsh identity in the area and it is home to more Welsh language speakers than elsewhere in Wales.

The map below shows the area covered by each unitary authority:



Source: Mid-year population estimates, Office for National Statistics (OGL 2020)

There are 703,361 people living in the Betsi Cadwaladr University Health Board. Of the total population:



49.6% Male  
50.4% Female



**24%** aged over 65 years  
**11%** aged over 75 years  
**3%** aged over 85 years



50.4% of adults  
are in good or  
very good general  
health

Source: National Survey for Wales and Digital Health Care Wales (DHCW 2025)

The Royal National Institute for the Blind People (RNIB) estimates that there are 3,003 people registered as blind or partially sighted in North Wales. Roughly half are registered as blind and half as partially sighted. This equates to 429 registered blind or partially sighted people per 100,000 population. This compares to an overall rate of 417 for Wales. By 2032 there are expected to be 32,300 people in the Betsi Cadwaladr University Health Board area living with sight loss, an estimated increase of 17% over the next decade. Source: RNIB (2023)

## 2.2.2 Welsh Index Multiple Deprivation

Health inequalities exist across North Wales, with 23 of the 191 most deprived Lower Output Areas (LSOAs) in Wales located here. About 13% of patients registered with North Wales GPs live in the most deprived 20% of areas, with higher prevalence of lifestyle risk factors. Rural areas face challenges due to ageing populations and increased health and social care needs, compounded by the difficulty of providing service to dispersed, isolated communities.

The population is expected to grow, particularly among older age groups, necessitating support for an ageing population to maintain health and economic stability. The older you are, the greater your risk of sight loss. The proportion of people aged 75 years and over in the Betsi Cadwaladr University Health Board is higher than the average for Wales - 11% of the population are aged 75 plus, compared to 10% in Wales.

People from different ethnic communities are at greater risk of some of the leading causes of sight loss. The proportion of people from minority ethnic groups is lower than the average for Wales, 2.40% of the population are from minority ethnic groups, compared to 4.30% across Wales. Source: Welsh Index Multiple Deprivation (2022)

### Chronic Disease Registers

Many blind and partially sighted people are also living with other health problems or disabilities. Sight loss is linked to age, and as we get older, we are more likely to be living with many health conditions at the same time.

Around 60% of people who experience strokes will also experience some form of visual impairment immediately after their stroke. There are national guidelines recommending specialist vision assessment for stroke survivors who have a suspected visual problem. In the area we estimate that 4,400 people have a long-standing health condition after experiencing a stroke.

Prevalence estimates suggest that over 1 million people in the UK have some form of dementia. Prevalence of sight loss is higher among people with dementia, especially those living in care homes. In the Betsi Cadwaladr University Health Board we estimate that 14,020 people are living with dementia. Within this group it is estimated that 4,980 people have dementia and vision impairment.

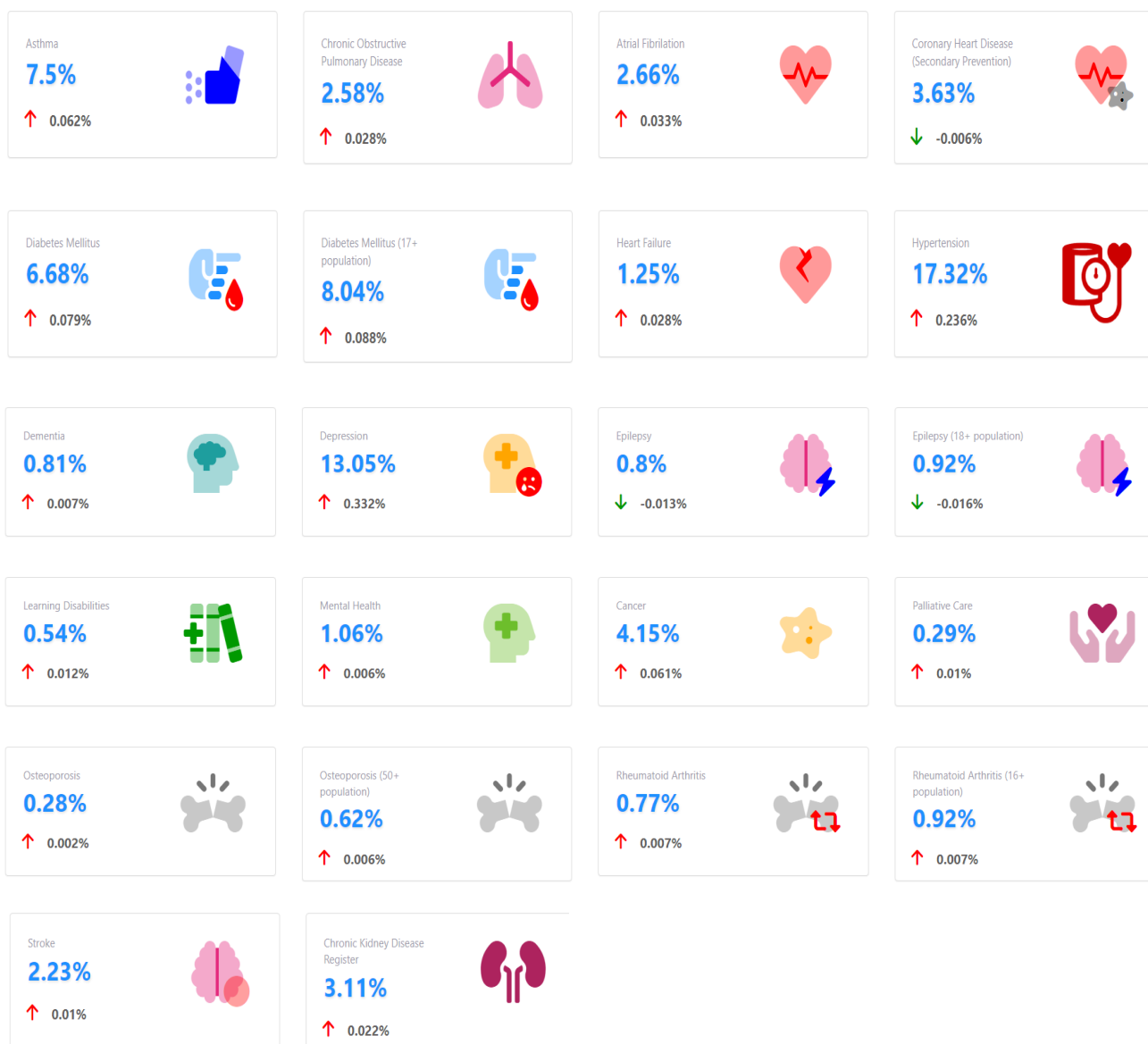
People with learning disabilities are 10 times more likely to experience sight loss than the general population. In the Betsi Cadwaladr University Health Board we estimate that 900 adults have a learning disability and partial sight. A further 250 adults have a learning disability and blindness. Source: RNIB.org.uk (2023)

### Prevalence Data 2024/25

The following prevalence data relates only to GP registered individuals who have been diagnosed with a chronic disease.

Chronic Disease	BCUHB %	Wales %
	2024/25	2024/25
Asthma	7.5	7.2
Atrial fibrillation	2.7	2.6
Cancer	4.2	3.6
Chronic obstructive pulmonary disease	2.6	2.3
Secondary prevention of coronary heart disease	3.6	3.4
Dementia	0.8	0.7
Diabetes mellitus (patients aged 17+)	8.0	8.2
Epilepsy (patients aged 18+)	0.9	0.9
Heart failure	1.3	1.3
Hypertension	17.3	16
Learning disability	0.5	0.5
Mental health	1.1	1.0
Obesity (patients aged 16+)	13.7	13.5
Osteoporosis (patients aged 50+)	0.6	0.6
Palliative care	0.3	0.3
Rheumatoid Arthritis (patients aged 16+)	0.9	0.9
Stroke and transient ischaemic attack	2.2	2.2

## Prevalence Summary 2023/24



Source: Welsh Government: General practice disease registers (30/07/2024), Audit+ (2023 and 2024) and QAIF (2020 to 2022)

### 2.2.3 WGOS Service Provision

Engagement across all WGOS pathways has commenced.

Following a successful WGOS 4 HCQ pilot, primary care screening is now live, with a practice in each of the three North Wales Integrated Health Communities (IHC's), contracted to prioritise higher-risk wait patients. This will then extend to new patients and ongoing monitoring.

WGOS 5 Independent Prescribing urgent care is being delivered in several practices across the health board. Referral numbers to this service are increasing, and we are collaborating with our secondary care colleagues to redirect referrals to this pathway. Monitoring has not yet

started. The Ophthalmic Diagnostic and Treatment Centres (ODTCs) located at Holywell Hospital opened in October 2024 and also accepts referrals under IPOS.

#### 2.2.4 Demand and unmet need for WGOS

##### **WGOS 3:**

- Current Status: We have identified where our low vision services are provided and where training is needed.
- Target: A minimum of two practices offering low vision services in each cluster area.

##### **WGOS 4 Hydroxychloroquine:**

- Current Status: Three practices in each IHC area can offer screening and we will be increasing patient capacity by using the Ophthalmic Diagnostic and Treatment Centre (ODTC).
- Challenge: Equipment shortages have been a hurdle in recruiting more practices.
- Plan: Onboard the teach and treat model and audit the level of provision after high-risk, longer wait patients have been seen. This will help gauge the number of additional practices needed per cluster.

##### **WGOS 4 Glaucoma:**

- Current Status: We have commenced discussions with our higher certificate glaucoma optometrists about delivering this service.
- Plan: Establish the pathway format to determine the number of practices needed per cluster for care close to home.

##### **WGOS 4 Medical Retina:**

- Plan: Establish a WGOS 4 Diabetic pathway.

##### **WGOS 5 IPOS:**

- Current Status: WGOS 5 Independent Prescribing urgent care is being delivered in several practices across the health board.
- Target: A minimum of one prescribing practice per cluster.

- Plan: Continue training optometrists via the teach and treat model and audit their locations to identify gaps in the service.

This structured approach will help ensure that BCU patients can receive the care they need closer to home and at their convenience.

### 2.2.5 DDA compliance

Data not available at time of publishing

### 2.2.6 Welsh language

The Welsh Language Standards are a set of statutory requirements which are relevant to the health board. They state clearly our responsibilities to provide bilingual services to patients and the public, however these standards do not apply to independent providers.

Since 30th May 2019, 6 Welsh language duties have been placed on independent primary care contractors.

For any services provided under the contract providers must:

- notify the local health board if they provide services through the medium of Welsh
- provide Welsh language versions of all documents or forms provided to it by the local health board
- ensure that any new sign or notice provided is bilingual. Contractors can use local health boards translation services for this purpose.
- encourage staff to wear a badge or lanyard to show that they are able to speak or learning Welsh, if they provide services in Welsh
- establish and record the language preference of a patient
- encourage and assist staff to utilise information and/or attend training courses or events provided by the local health board

North Wales has a strong Welsh identity and the highest number of Welsh language speakers in Wales, with 29.1% of people aged three and older able to speak Welsh. According to the Annual Population Survey for the year ending September 2019, Gwynedd had the highest proportion of Welsh speakers in both North Wales and Wales overall, with 75.6% of residents aged three and over speaking Welsh.

## 2.2.7 Workforce data

There are a total of 74 Optometric practices across the BCUHB footprint, as shown in the table below:

Cluster	Number of Practices	WGOS 1	WGOS 2	WGOS 3	WGOS 4	WGOS 5
Anglesey	7	7	7	5	1	0
Arfon	7	7	7	3	0	2
Dwyfor & North Meirionydd	6	6	6	3	0	1
South Meirionydd	1	1	1	0	0	1
Conwy East	4	4	4	2	0	0
Conwy West	7	7	7	4	1	0
Central & South Denbighshire	5	5	5	1	0	2
North Denbighshire	8	8	8	2	0	2
Central Wrexham	10	10	10	4	1	3
North & West Wrexham	2	2	2	0	0	0
South Wrexham	2	2	2	1	0	0
North East Flintshire	6	6	6	0	0	1
North West Flintshire	2	2	2	0	0	0
South Flintshire	7	7	7	1	0	2
<b>BCUHB</b>	<b>74</b>	<b>74</b>	<b>74</b>	<b>26</b>	<b>3</b>	<b>14</b>

## 2.2.8 Our Clusters

### 2.2.8.1 Anglesey

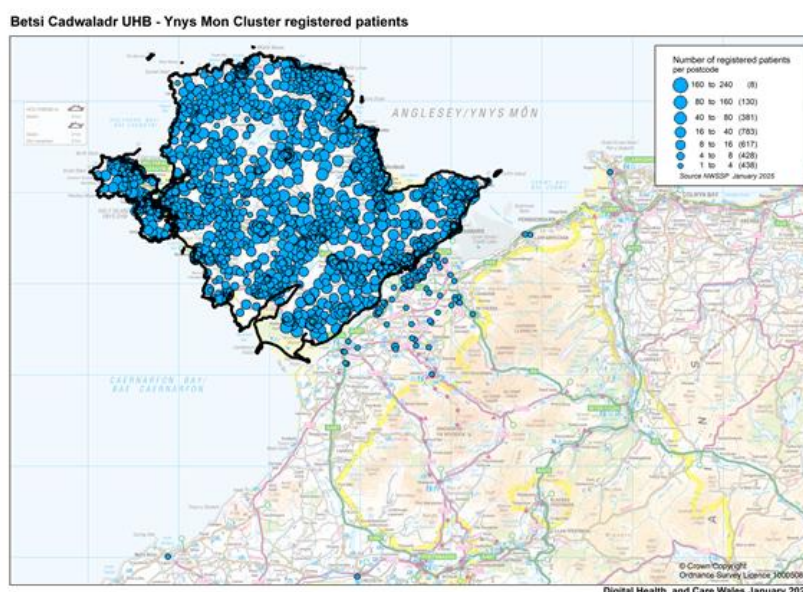
#### Overview

Anglesey, an island off the north-west coast of Wales, is the northernmost county in Wales. It borders Gwynedd across the Menai Strait and is surrounded by the Irish Sea. Holyhead is the largest settlement, followed by Llangefni and Amlwch. The county's economy is primarily based on agriculture, energy, and coastal tourism. Holyhead is also a major ferry port for Dublin, Ireland. Anglesey has the second-highest percentage of Welsh speakers in Wales, at 55.8%.

The Anglesey Cluster brings together all local services involved in providing health and care across the locality, serving a population of 65,850. The cluster consists of a GMS collaborative

made up of ten GP surgeries, a Community Pharmacy collaborative with thirteen pharmacies, and an Optometry collaborative made up of seven practices.

A map illustrating the Cluster area and population spread is below:



## About our population

<b>Vulnerable populations and inequality</b>	<ul style="list-style-type: none"> <li>14.7% of patients living in most deprived 20% of WIMD</li> <li>27.5% children in low income families</li> <li>16.8% are single person aged 66 and over households</li> <li>9.9% of the population provide unpaid care</li> </ul>
<b>Lifestyles and Prevention</b>	<ul style="list-style-type: none"> <li>14.9% of households have no car</li> <li>Good vaccination and screening rates, but low uptake among vulnerable groups</li> <li>Younger people: high rates of risky behaviours compared to North Wales and Wales e.g. smoking, alcohol, lack of physical exercise, obesity, teenage conceptions</li> <li>Low breastfeeding rates at 10 days</li> </ul>

## Population

Age group	Number	Cluster %	BCUHB %
0-15	11,300	17.2	17.3
16-29	8,600	13.1	14.8
30-34	10,100	15.3	16.8
45-65	19,300	29.3	28.9
66-84	14,500	22.0	19.3
85+	2,050	3.1	3.0
<b>Total</b>	<b>65,850</b>		

Chronic condition	Cluster (%)	BCUHB (%)
Asthma	8.5	7.5
Atrial fibrillation	2.9	2.7
Diabetes	9.0	8.0
Hypertension	18.1	17.3
Stroke & TIA	2.7	2.2

## Cluster Priorities

- Target marginalised groups via Inverse Care Law pilot (CYP)
- Monitor and manage chronic conditions
- Increasing prevention and wellbeing by focusing on healthy behaviours – e.g. family wellbeing, breastfeeding projects
- Improve access to services

The Optometric Practices that deliver WGOS in Anglesey are set out in the table below:

Practice Name	WGOS 1	WGOS 2	WGOS 3	WGOS 3 CVI	WGOS 4	WGOS 5	Wet AMD Pathway	Diabetic Retinopathy	Glaucoma ODTC	Glaucoma Data Capture
Allport B (Llangefni)	Y	Y	Y		Y					
Morris RHG (Holyhead)	Y	Y								

Murphy A Opticians (Amlwch)	Y	Y	Y						
Murphy A Opticians (Beaumaris)	Y	Y	Y						
Murphy A Opticians (Holyhead)	Y	Y	Y						
Murphy A Opticians (Llangefni)	Y	Y	Y						
Anglesey Eye Care (Gaerwen)	Y	Y							

The opening times of each Optometric Practice is set out in the table below:

Practice Name	Monday	Tuesday	Wednesday	Thursday	Friday	Saturday	Sunday
Allport B (Llangefni)	09:00 – 17:00	09:00 – 17:00	09:00 – 17:00	09:00 – 17:00	09:00 – 14:00	Closed	Closed
Morris RHG (Holyhead)	09:00 – 17:00	09:00 – 17:00	09:00 – 17:00	09:00 – 17:00	09:00 – 17:00	Closed	Closed
Murphy A Opticians (Amlwch)	09:00 – 17:00	09:00 – 17:00	Closed	09:00 – 17:00	09:00 – 17:00	Closed	Closed
Murphy A Opticians (Beaumaris)	Closed	10:00 – 14:00	*09:00 – 16:00	10:00 – 14:00	Closed	Closed	Closed
Murphy A Opticians (Holyhead)	09:00 – 17:00	09:00 – 17:00	09:00 – 17:00	09:00 – 17:00	09:00 – 17:00	Closed	Closed
Murphy A Opticians (Llangefni)	09:00 – 17:00	09:00 – 17:00	09:00 – 17:00	09:00 – 17:00	09:00 – 17:00	Closed	Closed
Anglesey Eye Care (Gaerwen)	10:00 - 13:00	10:00 - 17:00	10:00 - 15:00	10:00 - 17:00	10:00 - 15:00	10:00 - 13:00	Closed

Opening times are correct at March 2025 and are subject to amendment

\* Alternate Wednesdays 9:00 – 12:30

The Optometric Practices are located in Holyhead, Amlwch, Beaumaris, Llangefni and Gaerwen as set out in the map below:



In 2024/25, Optometry activity in Anglesey included:

#### WGOS1 NHS Sight Tests


	<b>4464</b> Total Appointments	Mobile
		Practice Based

#We are unable to split the mobile and practice based WGOS1 by cluster due to insufficient data refinement


#### Eye Health Examination Wales Claims

	<b>1536</b> Total Appointments	1044 Band 1
		265 Band 2
		227 Band 3


### WGOS 5 IPOS

	222 Total Appointments	135 Initial Assessment
		87 Follow Up

### Wet Age-related Macular Degeneration

	0 Total Appointments
--	-------------------------

### Diabetic Retinopathy Pathway

	0 Total Appointments
---	-------------------------

## Demand and unmet need for WGOS in Anglesey

WGOS 4 HCQ is provided by one practice in the Anglesey cluster, who provides the service on behalf of all clusters in the west area. Discussions have begun with higher certificate glaucoma optometrists about delivering WGOS 4 Glaucoma filtering and monitoring in primary care. WGOS 5 Independent Prescribing urgent care is not currently offered in Anglesey, however our goal is to increase capacity across all clusters.

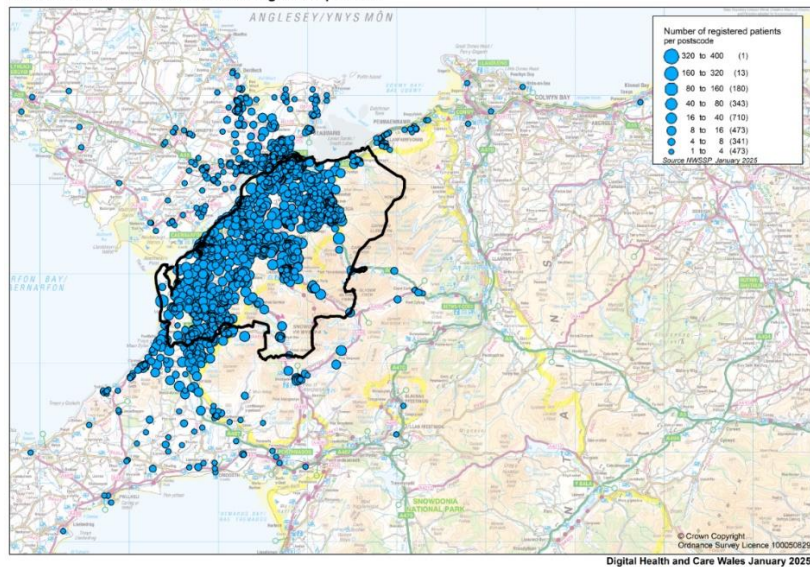
### 2.2.8.2 Arfon

#### Overview

Arfon is one of the clusters located in Gwynedd. It sits opposite Anglesey with the name Arfon meaning 'facing Anglesey'. Although it is relatively large by geographical area, Arfon is a predominantly urban rather than rural, with the majority of the population living in the two towns of Bethesda and Caernarfon, as well as in the University city of Bangor, where Ysbyty Bangor is also located. Welsh is the main language spoken in Arfon with 64.5% of Welsh speakers.

The Arfon Cluster brings together all local services involved in providing health and care across the locality, serving a population of 61,700. The cluster consists of a GMS collaborative made up of eight GP surgeries, a Community Pharmacy collaborative consisting of nine pharmacies, and an Optometry collaborative made up of seven practices. A map illustrating the Cluster area and population spread is below:

Betsi Cadwaladr UHB - Arfon Cluster registered patients



## Our Population

<b>Vulnerable populations and inequality</b>	<ul style="list-style-type: none"> <li>11.7% of patients living in most deprived 20% of WIMD</li> <li>8.1% provide unpaid care</li> <li>34.2% households living in relative poverty (<math>\leq 60\%</math> of £22,021 pa)</li> <li>Hosting 10,000 students every year</li> <li>Approximately 300 Gypsy / Irish Travellers / Roma population living in West area</li> </ul>
	<b>Lifestyles and Prevention</b>
	<ul style="list-style-type: none"> <li>16.8% of adults, and 4.2% of adolescents smoke</li> <li>27.5% of children are overweight or obese</li> <li>19.2% of adults drink more alcohol than guidelines</li> <li>Screening and vaccination uptake is generally good, but those from deprived areas significantly less likely to take up offers of screening or vaccination</li> </ul>

## Population

Age group	Number	Cluster %	BCUHB %
0-15	10,650	17.2	17.3
16-29	13,800	22.4	14.8
30-34	10,450	17.0	16.8
45-65	15,850	25.7	28.9
66-84	9,400	15.2	19.3
85+	1,550	2.5	3.0
<b>Total</b>	<b>61,700</b>		

Chronic condition	Cluster (%)	BCUHB (%)
Asthma	6.7	7.5
Atrial fibrillation	1.9	2.7
Diabetes	6.4	8.0
Hypertension	13.6	17.3
Stroke & TIA	1.6	2.2

## Cluster Priorities

- Children and Young people's services – focusing on immunisation and childhood obesity
- Prevention and wellbeing e.g. healthy behaviour, immunisation, screening, perinatal care including maternal mental health
- Elderly - focus on frailty

The Optometric Practices that deliver WGOS in Arfon are set out in the table below:

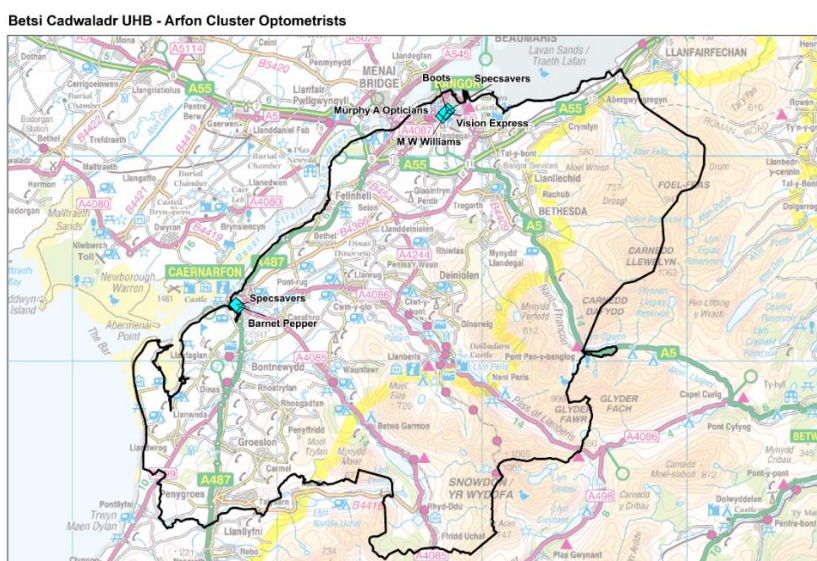
Practice Name	WGOS 1	WGOS 2	WGOS 3	WGOS 3 CVI	WGOS 4	WGOS 5	Wet AMD Pathway	Diabetic Retinopathy	Glaucoma ODT	Glaucoma Data Capture
Boots Opticians (Bangor)	Y	Y								
Murphy A Opticians (Bangor)	Y	Y	Y							
Barnet Pepper Ltd (Caernarfon)	Y	Y	Y							
Specsavers (Caernarfon)	Y	Y				Y				
Specsavers (Bangor)	Y	Y	Y							
Vision Express UK Ltd (Bangor)	Y	Y								
Williams MW (Bangor)	Y	Y				Y				

The opening times of each Optometric Practice is set out in the table below:

Practice Name	Monday	Tuesday	Wednesday	Thursday	Friday	Saturday	Sunday
Boots Opticians (Bangor)	09:00 – 17:30	09:00 – 17:30	09:00 – 17:30	09:00 – 17:30	09:00 – 17:30	09:00 – 17:30	11:00 – 16:30
Murphy A Opticians (Bangor)	09:00 – 17:00	09:00 – 17:00	09:00 – 17:00	09:00 – 17:00	09:00 – 17:00	Closed	Closed
Barnet Pepper Ltd (Caernarfon)	08:50 – 17:30	09:15 – 17:30	08:50 – 17:30	08:50 – 17:30	08:50 – 17:30	Closed	Closed
Specsavers (Caernarfon)	09:00 – 17:30	09:00 – 17:30	09:00 – 17:30	09:00 – 17:30	09:00 – 17:30	09:00 – 17:00	Closed
Specsavers (Bangor)	09:00 – 17:30	09:00 – 17:30	09:00 – 17:30	09:00 – 17:30	09:00 – 17:30	09:00 – 17:15	Closed
Vision Express UK Ltd (Bangor)	09:00 – 17:30	09:00 – 17:30	09:00 – 17:30	09:00 – 17:30	09:00 – 17:30	09:00 – 17:00	Closed
Williams MW (Bangor)	09:00 – 17:00	09:00 – 17:00	09:00 – 17:00	09:00 – 17:00	09:00 – 17:00	Closed	Closed

Opening times are correct at March 2025 and are subject to amendment

The Optometric Practices are located in Bangor and Caernarfon as set out in the map below:



In 2024/25 Optometry activity in Arfon included:

**WGOS1 NHS Sight Tests**

	<p><b>24270</b></p> <p>Total Appointments</p>	Mobile
		Practice Based

#We are unable to split the mobile and practice based WGOS1 by cluster due to insufficient data refinement

**Eye Health Examination Wales Claims**

	<p><b>5843</b></p> <p>Total Appointments</p>	<b>2879</b> Band 1
		<b>2155</b> Band 2
		<b>809</b> Band 3

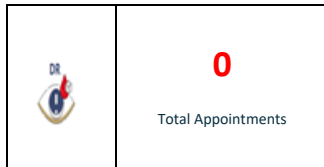
**WGOS 5 IPOS**

	<p><b>126</b></p> <p>Total Appointments</p>	<b>54</b>
		<b>72</b>

**Wet Age-related Macular Degeneration**

	<p><b>0</b></p> <p>Total Appointments</p>
--	---

### Diabetic Retinopathy Pathway



### Demand and unmet need for WGOS in Arfon

WGOS 4 HCQ is provided by one practice in the Anglesey cluster, who provides the service on behalf of all clusters in the west area. Discussions have begun with higher certificate glaucoma optometrists about delivering WGOS 4 Glaucoma filtering and monitoring in primary care. WGOS 5 Independent Prescribing urgent care is not currently offered in Arfon, however our goal is to increase capacity across all clusters.

### 2.2.8.3 Dwyfor and North Meirionnydd

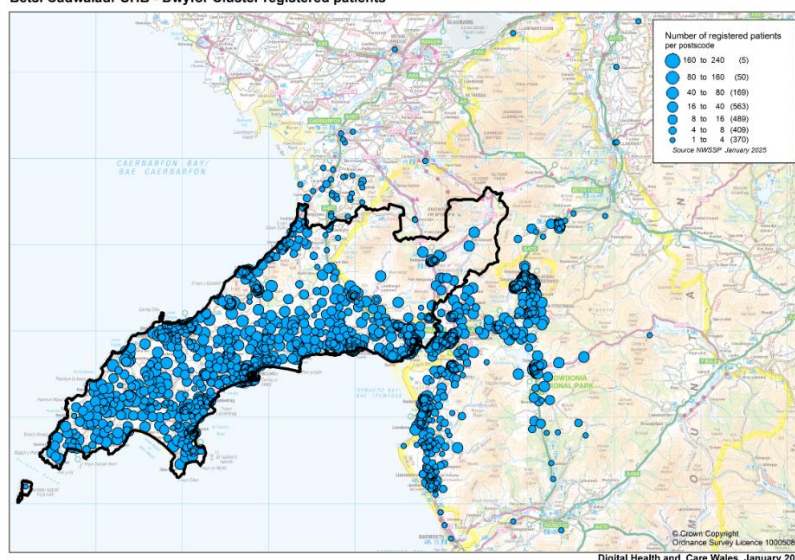
#### Overview

The Dwyfor and North Meirionnydd cluster is a coastal and mountainous region covering the Llŷn Peninsula and Eifionydd areas of Gwynedd. It includes the tourist towns of Porthmadog and Pwllheli, extending to Blaenau Ffestiniog. The cluster has a significant elderly population and sees an influx of people during summer. Welsh is the main language, spoken by 68.7% of the population.

The Dwyfor and North Meirionnydd Cluster brings together all local services involved in providing health and care across the Locality, serving a population of 39,950. The cluster consists of a GMS collaborative made up of six GP surgeries, a Community Pharmacy collaborative consisting of twelve pharmacies, and an Optometry collaborative merged with South Meirionnydd made up of six practices.

A map illustrating the Cluster area and population spread is below:

Betsi Cadwaladr UHB - Dwyfor Cluster registered patients



## About our Population

<b>Vulnerable populations and inequality</b>	<ul style="list-style-type: none"> <li>8.8% provide unpaid care, also large care home population</li> <li>35% of households are single person households</li> <li>29.4% of children live in low income households (<math>\leq</math> 60% of £22,021 pa)</li> <li>Agriculture, forestry and fishing account for 5.6% of occupations (Wales = 1.8%)</li> <li>Large numbers of visitors in summer period</li> </ul>
<b>Lifestyles and Prevention</b>	<ul style="list-style-type: none"> <li>Good vaccination and screening rates – but need to focus on vulnerable populations</li> <li>Risky behaviours – Gwynedd has high rates of alcohol misuse, smokers and lack of physical activity</li> </ul>

## Population

Age group	Number	Cluster %	BCUHB %
0-15	6,500	16.3	17.3
16-29	5,200	13.0	14.8
30-34	5,800	14.5	16.8
45-65	12,000	30.0	28.9
66-84	8,850	22.2	19.3
85+	1,600	4.0	3.0
<b>Total</b>	<b>39,950</b>		

Chronic condition	Cluster (%)	BCUHB (%)
Asthma	7.5	7.5
Atrial fibrillation	2.9	2.7
Diabetes	8.2	8.0
Hypertension	19.3	17.3
Stroke & TIA	2.4	2.2

## Cluster Priorities

- Prevention and wellbeing in terms of screening, and immunisation, healthy lifestyles and behaviours
- Mental health services including support for families
- Focus on elderly population – addressing needs via cluster collaboration

The Optometric Practices that deliver WGOS in Dwyfor and North Meirionydd are set out in the table below:

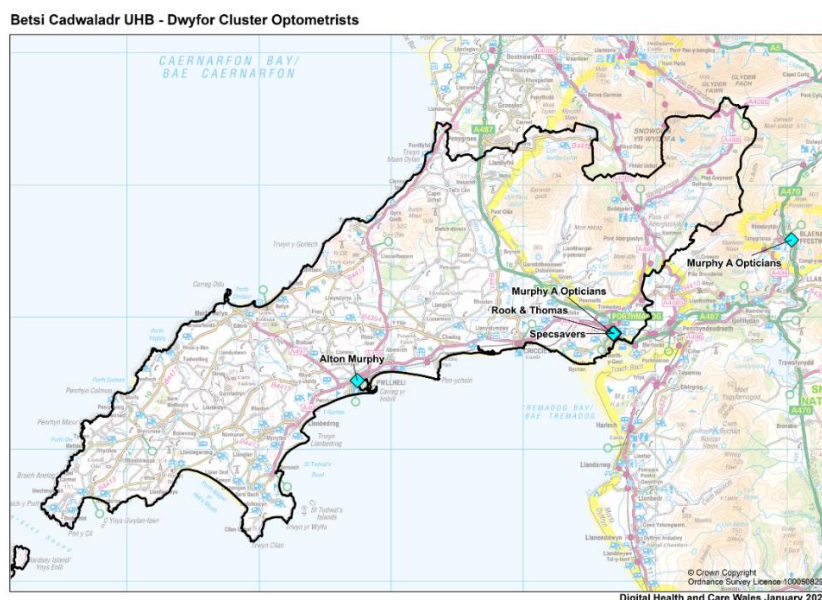
Practice Name	WGOS 1	WGOS 2	WGOS 3	WGOS 3 CVI	WGOS 4	WGOS 5	Wet AMD Pathway	Diabetic Retinopathy	Glaucoma ODT	Glaucoma Data Capture
Murphy A & Murphy L (Blaenau Ffestiniog)	Y	Y	Y							
Murphy A Opticians (Pwllheli)	Y	Y								
Rook & Thomas (Porthmadog)	Y	Y	Y							
Specsavers (Porthmadog)	Y	Y				Y				
Murphy A & Murphy L (Porthmadog)	Y	Y	Y							

The opening times of each Optometric Practice is set out in the table below:

Practice Name	Monday	Tuesday	Wednesday	Thursday	Friday	Saturday	Sunday
Murphy A & Murphy L (Blaenau Ffestiniog)	09:00 – 17:00	09:00 – 17:00	09:00 – 17:00	09:00 – 17:00	Closed	Closed	Closed
Murphy A Opticians (Pwllheli)	09:00 – 17:00	09:00 – 17:00	09:00 – 17:00	09:00 – 17:00	09:00 – 17:00	Closed	Closed
Rook & Thomas (Porthmadog)	09:00 – 17:30	09:00 – 17:30	09:00 – 17:30	09:00 – 17:30	09:00 – 17:30	Closed	Closed
Specsavers (Porthmadog)	09:00 – 17:00	09:00 – 17:00	09:00 – 17:00	09:00 – 17:00	09:00 – 17:00	Closed	Closed
Murphy A & Murphy L (Porthmadog)	09:00 – 17:00	09:00 – 17:00	09:00 – 17:00	09:00 – 17:00	09:00 – 17:00	Closed	Closed


Opening times are correct at March 2025 and are subject to amendment

The location of the optometric practices in Dwyfor and North Meirionnydd are set in the map below:




In 2024/25 Optometry activity in Dwyfor and North Meirionnydd included:

#### WGOS1 NHS Sight Tests


	<p><b>5440</b></p> <p>Total Appointments</p>	Mobile
		Practice Based

#We are unable to split the mobile and practice based WGOS1 by cluster due to insufficient data refinement


#### Eye Health Examination Wales Claims

	<p><b>2101</b></p> <p>Total Appointments</p>	<b>1119</b> Band 1
		<b>720</b> Band 2
		<b>262</b> Band 3

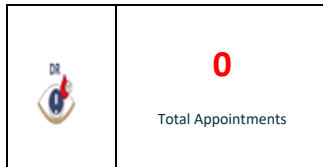
#### WGOS5 IPOS

	<p><b>222</b></p> <p>Total Appointments</p>	<b>135</b>
		<b>87</b>
		Initial Assessment
		Follow Up

#### Wet Age-related Macular Degeneration

	<p><b>0</b></p> <p>Total Appointments</p>
--	---

#### Diabetic Retinopathy Pathway



### **Demand and unmet need for WGOS in Dwyfor and North Meirionnydd**

WGOS 4 HCQ is provided by one practice in the Anglesey cluster, who provides the service on behalf of all clusters in the west area. Discussions have begun with higher certificate glaucoma optometrists about delivering WGOS 4 Glaucoma filtering and monitoring in primary care. WGOS 5 Independent Prescribing urgent care is offered by one practice in the cluster. Referral numbers are increasing, and we are working with secondary care colleagues to redirect referrals to this pathway. Monitoring has not yet started.

#### **2.2.8.4 South Meirionnydd**

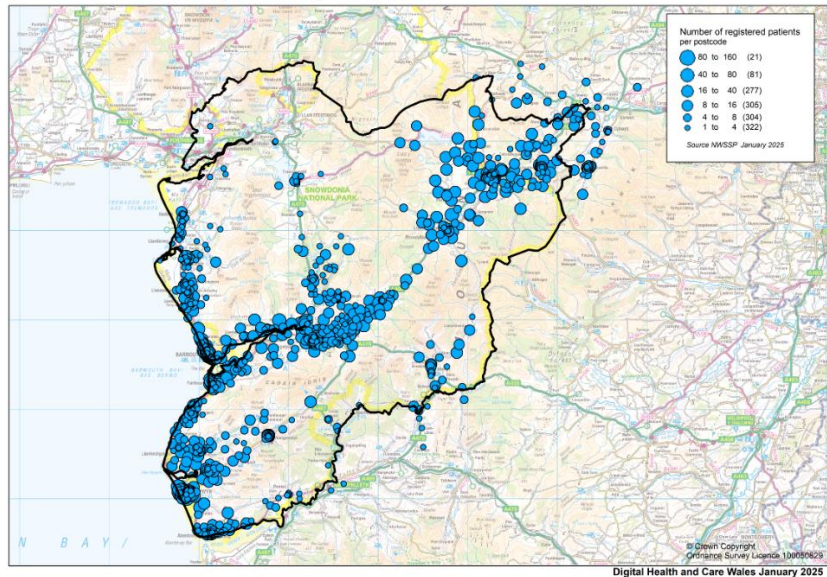
##### **Overview**

South Meirionnydd is a rural coastal and mountainous area, covering a large region from Penrhyndeudraeth and Bala to Dolgellau, Barmouth, and Tywyn. The cluster has a significant elderly population and sees an influx of people during summer. A higher proportion of its population live in rural areas compared to the North Wales average, and 53% speak Welsh.

The South Meirionnydd Cluster brings together all local services involved in providing health and care across the Locality, serving a population of 18,800. The cluster consists of a GMS collaborative made up of four GP surgeries and a Community Pharmacy collaborative consisting of six pharmacies. As there is only one optometry practice in South Meirionnydd, the optometry collaborative is merged with Dwyfor and North Meirionnydd.

A map illustrating the Cluster area and population spread is below:

Betsi Cadwaladr UHB - Meirionnydd Cluster registered patients



## About our population

<b>Vulnerable populations and inequality</b>	<ul style="list-style-type: none"> <li>9.3% of the population provide unpaid care</li> <li>37.8% are single person households</li> <li>Population density is 0.17 persons per hectare, 17.3% of households have no car</li> <li>7.2% work in Agriculture, forestry and fishing industries (Wales figure 1.8%)</li> <li>High visitor numbers during the summer period</li> <li>85.4% live in a flood risk area</li> </ul>
<b>Lifestyles and Prevention</b>	<ul style="list-style-type: none"> <li>Screening uptake good, but those from deprived areas significantly less likely to take up screening, access is an issue (Gwynedd data).</li> <li>Risky behaviours – Gwynedd has high rates of alcohol misuse, smokers and lack of physical activity</li> </ul>

## Population

Age group	Number	Cluster %	BCUHB %
0-15	2,700	14.4	17.3
16-29	2,250	12.0	14.8
30-34	2,700	14.3	16.8
45-65	5,950	31.7	28.9
66-84	4,400	23.3	19.3
85+	800	4.3	3.0
<b>Total</b>	<b>18,800</b>		

Chronic condition	Cluster (%)	BCUHB (%)
Asthma	7.3	7.5
Atrial fibrillation	3.6	2.7
Diabetes	9.2	8.0
Hypertension	18.8	17.3
Stroke & TIA	2.8	2.2

## Cluster Priorities

- Service user engagement (hidden populations)
- Focus on carers and unpaid carers
- Prevention and wellbeing including immunisation and screening, healthy behaviours
- Sustainability of service provision, greener primary care
- Improving access to services, particularly elderly care

The Optometric Practices that deliver WGOS in South Meirionnydd are set out in the table below:

Practice Name	WGOS 1	WGOS 2	WGOS 3	WGOS 3 CVI	WGOS 4	WGOS 5	Wet AMD Pathway	Diabetic Retinopathy	Glaucoma ODT	Glaucoma Data Capture
Eleanor Davies Optometrist (Dolgellau)	Y	Y	Y			Y				

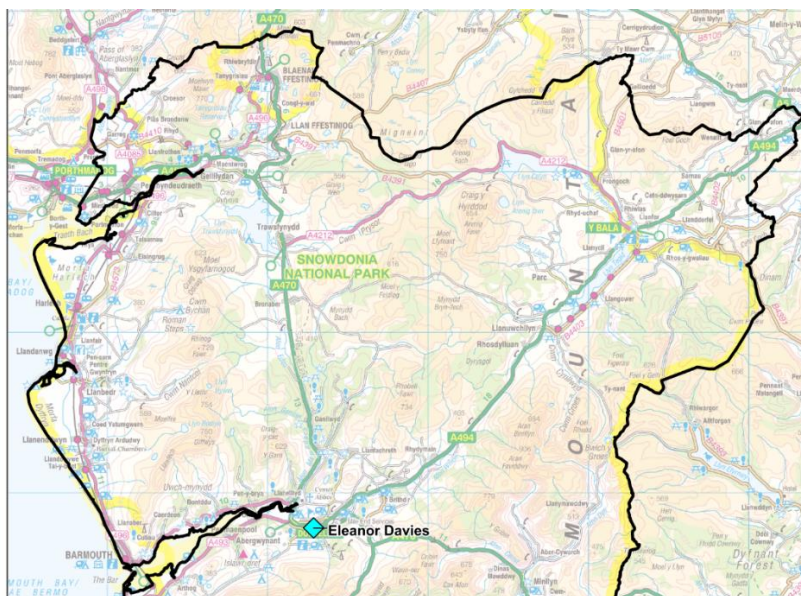
The opening times of each Optometric Practice is set out in the table below:

Practice Name	Monday	Tuesday	Wednesday	Thursday	Friday	Saturday	Sunday
Eleanor Davies Optometrist (Dolgellau)	09:00- 17:00	09:00- 17:00	09:00- 17:00	09:00- 17:00	09:00-16:30	Closed	Closed

Opening times are correct at March 2025 and are subject to amendment


The Optometric Practice is located in Dolgellau as set out in the map below:

Betsi Cadwaladr UHB - Meirionnydd Cluster Optometrists




In 2024/25 Optometry activity in South Meirionnydd included:

**WGOS1 NHS Sight Tests**


	<p><b>1382</b></p> <p>Total Appointments</p>	#Mobile
		Practice Based

#We are unable to split the mobile and practice based WGOS1 by cluster due to insufficient data refinement


**Eye Health Examination Wales Claims**

	<p><b>516</b></p> <p>Total Appointments</p>	<b>283</b> Band 1
		<b>143</b> Band 2
		<b>90</b> Band 3


**WGOS 5 IPOS**

	<p><b>7</b></p> <p>Total Appointments</p>	<b>5</b> Initial Assessment
		<b>2</b> Follow Up

**Wet Age-related Macular Degeneration**

	<p><b>0</b></p> <p>Total Appointments</p>
--	---

**Diabetic Retinopathy Pathway**

	<p><b>0</b></p> <p>Total Appointments</p>
---	---

## Demand and unmet need for WGOS in South Meirionnydd

WGOS 4 HCQ is provided by one practice in the Anglesey cluster, who provides the service for all clusters in the west area. Discussions have begun with higher certificate glaucoma optometrists about delivering WGOS 4 Glaucoma filtering and monitoring in primary care. WGOS 5 Independent Prescribing urgent care is offered by the practice in the cluster. Referral numbers are increasing, and we are working with secondary care colleagues to redirect referrals to this pathway. Monitoring has not yet started.

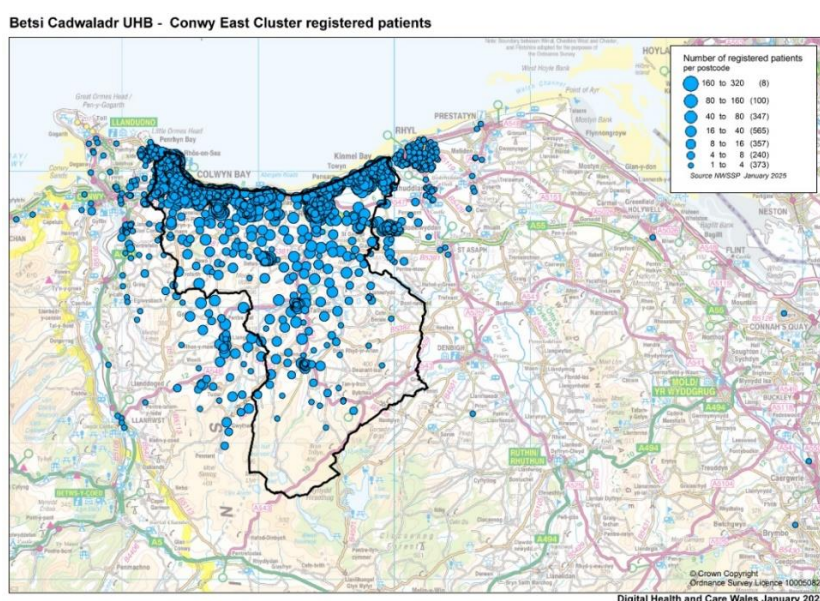
### 2.2.8.5 Conwy East

#### Overview

The Conwy East Cluster extends from Abergele in the north to Llansannan in the south. It includes the coastal towns of Abergele, Towyn, and Kinmel Bay, as well as rural inland communities like Llanefydd, Llanfairtalhaearn, and Llansannan. The cluster has pockets of deprivation and sees an influx of tourists during summer. Welsh speakers make up 18.8% of the population, with less Welsh spoken on the coastal fringe.

The Conwy East Cluster brings together all local services involved in providing health and care across the Locality, serving a population of 54,250. The cluster consists of a GMS collaborative made up of five GP practices, a Pharmacy collaborative comprising of twelve pharmacies and an Optometry collaborative group comprising of four practices.

A map illustrating the Cluster area and population spread is below:



## About our population

<b>Vulnerable populations and inequality</b>	<ul style="list-style-type: none"> <li>• 20.9% of patients living in most deprived 20% of WIMD</li> <li>• 29.1% children in relative income poverty</li> <li>• 10.9% of the population provide unpaid care</li> <li>• 30.7% households only pensioners</li> <li>• 17.6% are single person aged 66 and over households</li> <li>• 1.4% of households no central heating</li> <li>• 3.4% households are overcrowded</li> <li>• 19.1% of households have no car</li> </ul>
<b>Lifestyles and Prevention</b>	<ul style="list-style-type: none"> <li>• Diabetic Retinopathy Screening waiting lists</li> <li>• High proportion of adults reporting to be overweight or obese, 62.7% compared to 58.9% across BCUHB</li> <li>• Low proportion of adults meeting recommended levels of physical activity, 37.5% compared to 49.2% BCUHB</li> </ul>

### Population

Age group	Number	Cluster %	BCUHB %
0-15	9,000	16.6	17.3
16-29	7,150	13.2	14.8
30-34	8,400	15.5	16.8
45-65	15,550	28.7	28.9
66-84	12,000	22.2	19.3
85+	2,150	3.9	3.0
<b>Total</b>	<b>54,250</b>		

Chronic condition	Cluster (%)	BCUHB (%)
Asthma	7.9	7.5
Atrial fibrillation	3.1	2.7
Diabetes	9.2	8.0
Hypertension	18.2	17.3
Stroke & TIA	2.4	2.2

### Cluster Priorities

- Alignment with All Wales Diabetes Prevention Pathway (AWDPP)
- Deliver more "step up" enhanced care
- Strengthen collaborative working (Dental)

The Optometric Practices that deliver WGOS in Conwy East are set out in the table below:

Practice Name	WGOS 1	WGOS 2	WGOS 3	WGOS 3 CVI	WGOS 4	WGOS 5	Wet AMD Pathway	Diabetic Retinopathy	Glaucoma ODTC	Glaucoma Data Capture
Edwards Opticians (Abergele)	Y	Y								
Murphy A Opticians (Colwyn Bay)	Y	Y								
Specsavers (Colwyn Bay)	Y	Y	Y							
Blink Optical (Rhos On Sea)	Y	Y	Y							

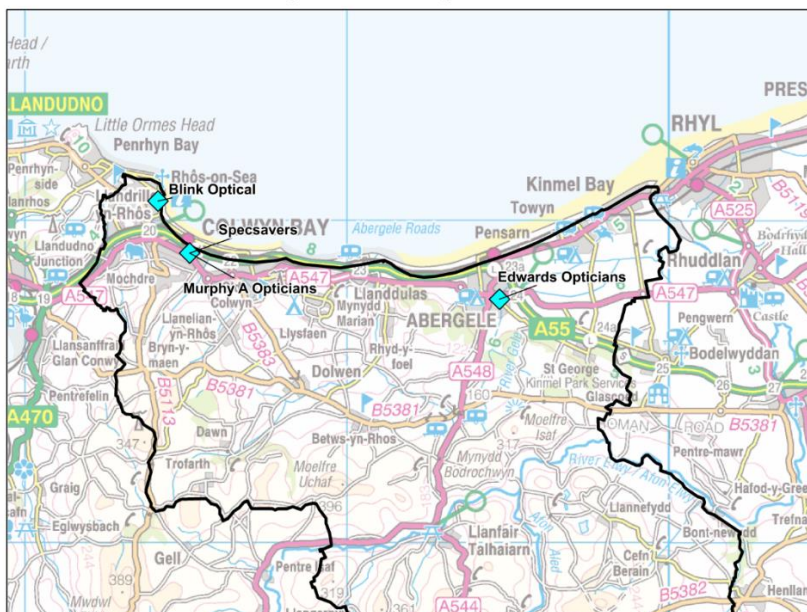
The opening times of each Optometric Practice is set out in the table below:

Practice Name	Monday	Tuesday	Wednesday	Thursday	Friday	Saturday	Sunday
Edwards Opticians (Abergele)	09:00- 17:30	09:00- 17:30	09:00- 17:30	09:00- 17:30	09:00- 17:30	Closed	Closed
Murphy A Opticians (Colwyn Bay)	09:00- 17:00	09:00- 17:00	Closed	09:00- 17:00	09:00- 17:00	Closed	Closed
Specsavers (Colwyn Bay)	08:45 – 17:30	08:30 – 19:00	08:30 – 19:00	08:45 – 17:00	08:30 – 19:00	09:00 – 17:30	09:00 – 16:00
Blink Optical (Rhos on Sea)	Closed	14:00 – 17:00	14:00 – 17:00	Closed	10:00 – 14:00 (alt Fridays)	Closed	Closed

Opening times are correct at March 2025 and are subject to amendment

The location of the Optometric Practices are located in the north of the cluster as set out in the map below:

**Betsi Cadwaladr UHB - Conwy East Cluster Optometrists**



**In 2024/25 Optometry activity in Conwy East included:**

**WGOS1 NHS Sight Tests**

	<b>9074</b>	#Mobile
	Total Appointments	Practice Based

#We are unable to split the mobile and practice based WGOS1 by cluster due to insufficient data refinement

**Eye Health Examination Wales Claims**

	<b>2896</b>	Total Appointments	<b>1630</b> Band 1
			<b>921</b> Band 2
			<b>345</b> Band 3

**WGOS 5 IPOS**

	<b>0</b>	Initial Assessment
		Follow Up

**Wet Age-related Macular Degeneration**

	<b>0</b>
Total Appointments	

**Diabetic Retinopathy Pathway**

	<b>0</b>
Total Appointments	

**Demand and unmet need for WGOS in Conwy East**

WGOS 4 HCQ is provided by one practice located in Conwy West, who provides the service on behalf of all clusters in the central area. Discussions have begun with higher certificate

glaucoma optometrists about delivering WGOS 4 Glaucoma filtering and monitoring in primary care. WGOS 5 Independent Prescribing urgent care is not currently offered in Conwy East, however our goal is to increase capacity across all clusters.

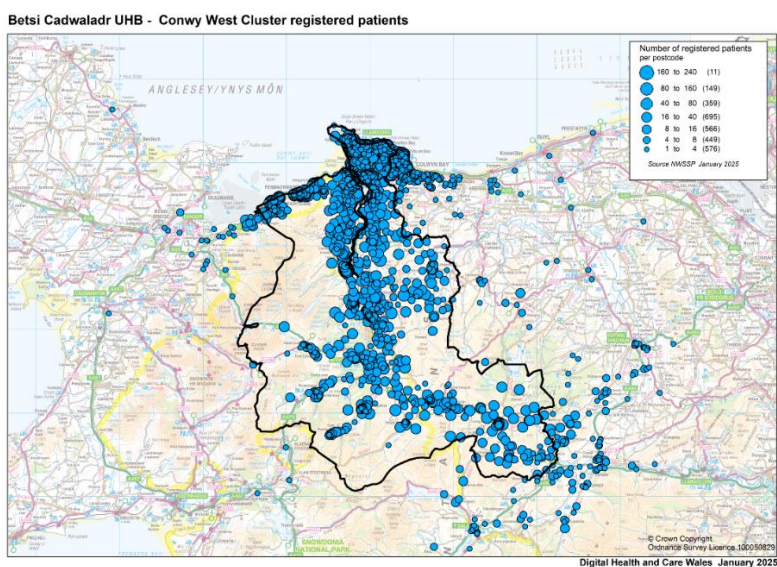
### 2.2.8.6 Conwy West

#### Overview

The Conwy West Cluster, one of the largest in Wales, is geographically diverse. Most residents live in the urban coastal strip of Llandudno, Conwy, Penmaenmawr, and Llanfairfechan. The southern area is very rural, with some remote communities. The cluster has a varied demographic, including areas of deprivation, a high percentage of elderly patients, and a summer influx of tourists. Welsh speakers make up 31.5% of the population, with less Welsh spoken on the coastal fringe.

The Conwy West Cluster brings together all local services involved in providing health and care across the Locality, serving a population of 58,750. The cluster consists of a GMS collaborative made up of twelve GP practices, a Pharmacy collaborative comprising of thirteen pharmacies and an Optometry collaborative group comprising of seven practices.

A map illustrating the Cluster area and population spread is below:



## About our population

<b>Vulnerable populations and inequality</b>	<ul style="list-style-type: none"> <li>• 5.9% of patients living in most deprived 20% of WIMD</li> <li>• 29.5% children in relative income poverty</li> <li>• 31% households only pensioners</li> <li>• 18.2% are single person aged 66 and over households</li> <li>• 9.5% of the population provide unpaid care</li> <li>• 1.7% of households no central heating</li> <li>• 3.1% households are overcrowded</li> <li>• 18.4% of households have no car</li> </ul>
<b>Lifestyles and Prevention</b>	<ul style="list-style-type: none"> <li>• 30.5% four to five year olds overweight or obese (BCUHB: 28.8%)</li> <li>• Diabetic Service Provision</li> <li>• Tier 0 mental health support</li> <li>• Healthy ageing</li> </ul>

## Population

Age group	Number	Cluster %	BCUHB %
0-15	9,100	15.5	17.3
16-29	7,500	12.8	14.8
30-34	9,100	15.5	16.8
45-65	17,700	30.2	28.9
66-84	13,000	22.2	19.3
85+	2,350	4.0	3.0
<b>Total</b>	<b>58,750</b>		

Chronic condition	Cluster (%)	BCUHB (%)
Asthma	7.1	7.5
Atrial fibrillation	2.9	2.7
Diabetes	7.9	8.0
Hypertension	18.3	17.3
Stroke & TIA	2.6	2.2

## Cluster Priorities

- Alignment with All Wales Diabetes Prevention Pathway (AWDPP)
- Support a Cluster-based mental health and wellbeing project based on learning from previous cluster projects
- Strengthen collaborative working (Dental)
- Deliver more "step up" enhanced care

The Optometric Practices that deliver WGOS in Conwy West are set out in the table below:

Practice Name	WGOS 1	WGOS 2	WGOS 3	WGOS 3 CVI	WGOS 4	WGOS 5	Wet AMD Pathway	Diabetic Retinopathy	Glaucoma ODTc	Glaucoma Data Capture
Asda (Llandudno)	Y	Y								
Blink Optical (Conwy)	Y	Y	Y							
Boots (Llandudno)	Y	Y								
MRC Searle (Llandudno)	Y	Y	Y							
Williams RL (Llandudno)	Y	Y	Y		Y					
Specsavers (Llandudno)	Y	Y	Y							
Vision Express (Llandudno)	Y	Y								

The opening times of each Optometric Practice is set out in the table below:

Practice Name	Monday	Tuesday	Wednesday	Thursday	Friday	Saturday	Sunday
Asda (Llandudno)	09:00-18:30	09:00-19:30	09:00-18:30	09:00-19:30	09:00-18:30	09:00-18:30	10:00-16:00
Blink Optical (Conwy)	10:00-16:00	Closed	Closed	10:00-16:00	10:00 – 14:00 (alt Fridays)	Closed	Closed
Boots (Llandudno)	09:00-17:30	09:00-17:30	09:00-17:30	09:00-17:30	09:00-17:30	09:00-17:30	10:00-15:00
M R C Searle (Llandudno)	09:00-17:00	09:00-17:00	09:00-17:00	09:00-17:00	09:00-17:00	Closed	Closed
Williams RL (Llandudno)	09:00-17:30	09:00-17:30	09:00-17:30	09:00-17:30	09:00-17:30	09:00-17:00	Closed

Specsavers (Llandudno)	09:00-17:00	09:00-17:00	09:00-17:00	09:00-17:00	09:00-17:00	09:00-17:00	10:30 -16:00
Vision Express (Llandudno)	09:00-17:30	09:00-17:30	09:00-17:30	09:00-17:30	09:00-17:30	09:00-17:30	Closed

Opening times are correct at March 2025 and are subject to amendment

The Optometric Practices are located mainly in Llandudno as set out in the map below:

**Betsi Cadwaladr UHB - Conwy West Cluster Optometrists**



In 2024/25 Optometry activity in Conwy West included:

**WGOS1 NHS Sight Tests**

	<p><b>14305</b></p> <p>Total Appointments</p>	Mobile
		Practice Based

#We are unable to split the mobile and practice based WGOS1 by cluster due to insufficient data refinement

**Eye Health Examination Wales Claims**

	<p><b>3743</b></p> <p>Total Appointments</p>	2006 Band 1
		1071 Band 2
		666 Band 3

**WGOS 5 IPOS**

	<p><b>0</b></p> <p>Total Appointments</p>	Initial Assessment
		Follow Up

**Wet Age-related Macular Degeneration**

	<p><b>0</b></p> <p>Total Appointments</p>
--	---

**Diabetic Retinopathy Pathway**

	<p><b>0</b></p> <p>Total Appointments</p>
--	---

**Demand and unmet need for WGOS in Conwy West**

WGOS 4 HCQ is provided by one practice located in Conwy West, who provides the service on behalf of all clusters in the central area. Discussions have begun with higher certificate glaucoma optometrists about delivering WGOS 4 Glaucoma filtering and monitoring in

primary care. WGOS 5 Independent Prescribing urgent care is not currently offered in Conwy West, however our goal is to increase capacity across all clusters.

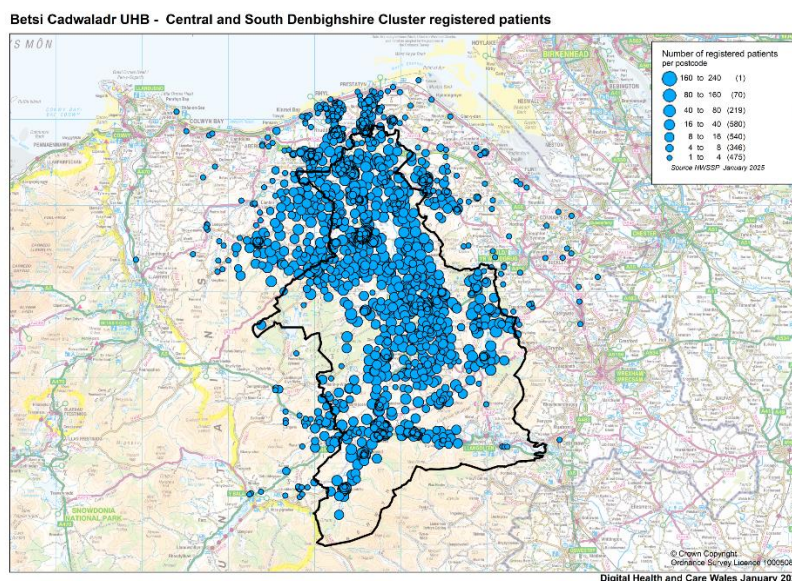
### 2.2.8.7 Central and South Denbighshire

#### Overview

The Central and South Denbighshire cluster is semi-rural, covering the farming towns of Corwen, Ruthin, and Denbigh in the south, and the urban city of St Asaph in the north. The area is geographically wide, with pockets of isolation and deprivation. There is also a history of mental health patients in the area, following the closure of the North Wales Hospital in Denbigh in 1995. Welsh speakers make up 34.4% of the population.

The Cluster brings together all local services involved in providing health and care across the Locality, serving a population of 42,700. The cluster consists of a GMS collaborative made up of eight GP surgeries, a Pharmacy collaborative comprising of eight pharmacies and an Optometry collaborative group comprising of 5 practices.

A map illustrating the Cluster area and population spread is below:



## About our Population

<b>Vulnerable populations and inequality</b>	<ul style="list-style-type: none"> <li>3.5% of patients living in most deprived 20% of WIMD</li> <li>26.2% children in relative income poverty</li> <li>9.8% of the population provide unpaid care</li> <li>28.6% households only pensioners</li> <li>15.8% are single person aged 66 and over households</li> <li>2.9% households are overcrowded</li> <li>12.4% of households have no car</li> </ul>
<b>Lifestyles and Prevention</b>	<ul style="list-style-type: none"> <li>11.3% of adult smoke compared to 10.6% BCUHB and 12.8% across Wales. There are stark differences between the least and most deprived communities</li> <li>26.6% breastfeeding at 10 days compared to 35.1% across BCUHB</li> <li>31.4% four to five year olds overweight or obese (BCUHB: 28.8%)</li> </ul>

### Population

Age group	Number	Cluster %	BCUHB %
0-15	7,150	16.7	17.3
16-29	5,800	13.6	14.8
30-34	6,600	15.4	16.8
45-65	13,150	30.8	28.9
66-84	8,750	20.5	19.3
85+	1,250	3.0	3.0
<b>Total</b>	<b>42,700</b>		

Chronic condition	Cluster (%)	BCUHB (%)
Asthma	7.7	7.5
Atrial fibrillation	2.9	2.7
Diabetes	7.7	8.0
Hypertension	18.0	17.3
Stroke & TIA	2.3	2.2

### Cluster Priorities

- Addressing health inequalities
- Strengthen collaborative working (Dental and Optometry)
- Multidisciplinary working - streamline pathways between professions
- Scale up Respiratory Hub using learning from the 12 month period
- Support a Cluster-based mental health and wellbeing project based on learning from previous cluster projects

The Optometric Practices that deliver WGOS in Central and South Denbighshire are set out in the table below:

Practice Name	WGOS 1	WGOS 2	WGOS 3	WGOS 3 CVI	WGOS 4	WGOS 5	Wet AMD Pathway	Diabetic Retinopathy	Glaucoma ODTc	Glaucoma Data Capture
Saunders & Schwarz (Denbigh)	Y	Y				Y				
Murphy A Opticians (Denbigh)	Y	Y								
Specsavers (Denbigh)	Y	Y								
Murphy A & Murphy L (Ruthin)	Y	Y	Y							
Smith Family Opticians Ltd (Ruthin)	Y	Y				Y				

The opening times of each Optometric Practice is set out in the table below:

Practice Name	Monday	Tuesday	Wednesday	Thursday	Friday	Saturday	Sunday
Saunders & Schwarz (Denbigh)	09:00-17:30	09:00-17:30	09:00-17:30	09:00-17:30	09:00-17:30	Closed	Closed
Murphy A Opticians (Denbigh)	09:00-17:00	09:00-17:00	09:00-17:00	09:00-17:00	09:00-17:00	Closed	Closed
Specsavers (Denbigh)	09:00-17:00	09:00-17:00	09:00-17:00	09:00-17:00	09:00-17:00	09:00-17:00	Closed
Murphy A & Murphy L (Ruthin)	09:00-17:00	09:00-17:00	09:00-17:00	09:00-17:00	09:00-17:00	Closed	Closed
Smith Family Opticians Ltd (Ruthin)	09:00-17:30	09:00-17:30	09:00-17:30	09:00-17:30	09:00-17:30	Closed	Closed

Opening times are correct at March 2025 and are subject to amendment


The Optometric Practices are located in Denbigh and Ruthin as set out in the map below:

**Betsi Cadwaladr UHB - Central and South Denbighshire Cluster Optometrists**




**In 2024/25 Optometry activity in Central and South Denbighshire included:**

**WGOS1 NHS Sight Tests**


	<p><b>5980</b></p> <p>Total Appointments</p>	Mobile
		Practice Based

#We are unable to split the mobile and practice based WGOS1 by cluster due to insufficient data refinement


**Eye Health Examination Wales Claims**

	<p><b>1896</b></p> <p>Total Appointments</p>	<b>1194</b> Band 1
		<b>420</b> Band 2
		<b>282</b> Band 3


**WGOS 5 IPOS**

	<p><b>78</b></p> <p>Total Appointments</p>	<b>37</b> Initial Assessment
		<b>41</b> Follow Up

**Wet Age-related Macular Degeneration**

	<p><b>0</b></p> <p>Total Appointments</p>
--	---

**Diabetic Retinopathy Pathway**

	<p><b>0</b></p> <p>Total Appointments</p>
---	---

**Demand and unmet need for WGOS in Central and South Denbighshire**

WGOS 4 HCQ is provided by one practice in the Conwy West cluster, who provides the service for all clusters in the central area. Discussions have begun with higher certificate glaucoma optometrists about delivering WGOS 4 Glaucoma filtering and monitoring in primary care. WGOS 5 Independent Prescribing urgent care is offered by two practices in the cluster. Referral

numbers are increasing, and we are working with secondary care colleagues to redirect referrals to this pathway. Monitoring has not yet started.

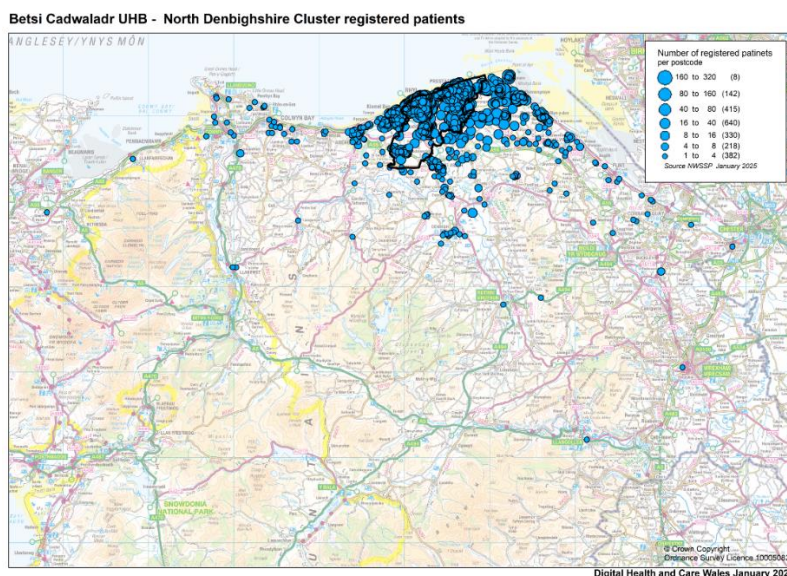
### 2.2.8.8 North Denbighshire

#### Overview

The North Denbighshire Cluster encompasses the coastal towns of Prestatyn and Rhyl, forming a single built-up area. It includes areas of significant deprivation and experiences an influx of tourists during peak holiday periods. Glan Clwyd Hospital, located in Bodelwyddan, houses the North Wales Cancer Treatment Centre, serving patients across North Wales. The percentage of Welsh speakers in North Denbighshire is 14.4%.

The North Denbighshire Cluster brings together all local services involved in providing health and care across the Locality, serving a population of 57,300. The cluster consists of a GMS collaborative made up of six GP practices, a Pharmacy collaborative comprising of fifteen pharmacies and an Optometry collaborative group comprising of 8 practices.

A map illustrating the Cluster area and population spread is below:



## About our population

<b>Vulnerable populations and inequality</b>	<ul style="list-style-type: none"> <li>• 26.8% of patients living in most deprived 20% of WIMD</li> <li>• 25.1% children in relative income poverty</li> <li>• 7.4% babies have low birth weight</li> <li>• 16.9% are single person aged 66 and over households</li> <li>• 28.4% households only pensioners</li> <li>• 11.4% of the population provide unpaid care</li> <li>• 3.8% households are overcrowded</li> <li>• 22.1% of households have no car</li> </ul>
<b>Lifestyles and Prevention</b>	<ul style="list-style-type: none"> <li>• 11.3% of adults smoke (10.6% BCUHB). There are stark differences between the least and most deprived communities</li> <li>• 26.6% breastfeeding at 10 days compared to 35.1% across BCUHB</li> <li>• 31.4% four to five year olds overweight or obese (28.8% BCUHB)</li> </ul>

## Population

Age group	Number	Cluster %	BCUHB %
0-15	10,450	18.3	17.3
16-29	8,400	14.6	14.8
30-34	8,900	15.5	16.8
45-65	16,100	28.1	28.9
66-84	11,700	20.4	19.3
85+	1,750	3.0	3.0
<b>Total</b>	<b>57,300</b>		

Chronic condition	Cluster (%)	BCUHB (%)
Asthma	7.9	7.5
Atrial fibrillation	2.8	2.7
Diabetes	9.1	8.0
Hypertension	17.3	17.3
Stroke & TIA	2.2	2.2

## Cluster Priorities

- Scale up "One stop shop" model using Point of Care Testing (PoCT) to enhance care for people with diabetes
- Support a Cluster-based mental health and wellbeing project based on learning from previous cluster projects
- Prevention and early intervention – use Patient data to identify those at risk of admission and use multidisciplinary approach to provide wrap-around support (Respiratory / Cardiology)

The Optometric Practices that deliver WGOS in North Denbighshire are set out in the table below:

Practice Name	WGOS 1	WGOS 2	WGOS 3	WGOS 3 CVI	WGOS 4	WGOS 5	Wet AMD Pathway	Diabetic Retinopathy	Glaucoma ODTC	Glaucoma Data Capture
Morrice-Evans (Prestatyn)	Y	Y	Y			Y				
Specsavers (Prestatyn)	Y	Y								
Boots Opticians (Rhyl)	Y	Y								
Morrice-Evans (Rhuddlan)	Y	Y	Y			Y				
Scrivens Ltd (Rhyl)	Y	Y								
Specsavers (Rhyl)	Y	Y								

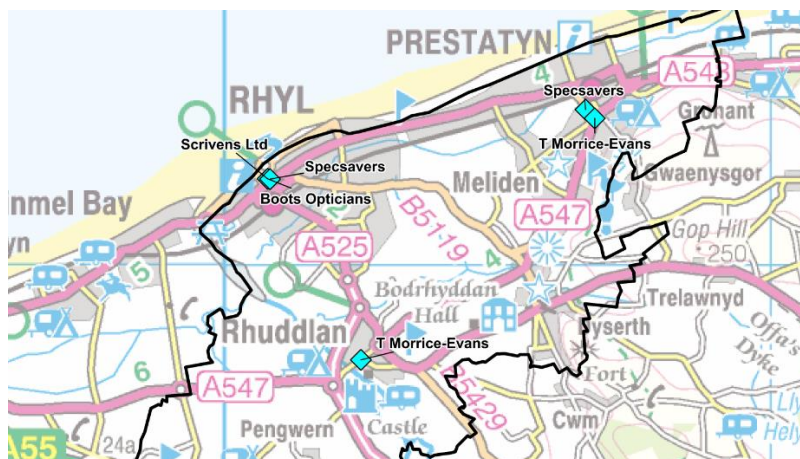
The opening times of each Optometric Practice is set out in the table below:

Practice Name	Monday	Tuesday	Wednesday	Thursday	Friday	Saturday	Sunday
Morrice-Evans (Prestatyn)	09.00 - 17.30	09.00 - 17.30	09.00 - 17.30	09.00 - 17.30	09.00 - 17.30	Closed	Closed
Specsavers (Prestatyn)	09.00 - 17.00	09.00 - 17.00	09.00 - 17.00	09.00 - 17.00	09.00 - 17.00	09.00 - 17.00	10:00 – 15:30
Boots Opticians (Rhyl)	09.00 - 17.30	09.00 - 17.30	09.00 - 17.30	09.00 - 17.30	09.00 - 17.30	09.00 - 17.00	Closed
Morrice-Evans (Rhuddlan)	09.00 - 17.30	09.00 - 17.30	09.00 - 17.30	09.00 - 17.30	09.00 - 17.30	09:00 -13:00	Closed
Scrivens Ltd (Rhyl)	09.00 - 17.30	09.00 - 17.30	09.00 - 17.30	09.00 - 17.30	09.00 - 17.30	09.00 - 17.00	Closed
Specsavers (Rhyl)	09.00 - 17.00	09.00 - 17.00	09.00 - 17.00	09.00 - 17.00	09.00 - 17.00	09.00 - 17.00	Closed

Opening times are correct at March 2025 and are subject to amendment

The Optometric Practices are located in Rhyl, Rhuddlan and Prestatyn as set out in the map below:

Betsi Cadwaladr UHB - North Denbighshire Cluster Optometrists



In 2024/25 Optometry activity in North Denbighshire included:

**WGOS1 NHS Sight Tests**

	<p><b>17183</b></p> <p>Total Appointments</p>	#Mobile
		Practice Based

#We are unable to split the mobile and practice based WGOS1 by cluster due to insufficient data refinement

**Eye Health Examination Wales Claims**

	<p><b>4804</b></p> <p>Total Appointments</p>	<b>2346</b> Band 1
		<b>1781</b> Band 2
		<b>677</b> Band 3

**WGOS 5 IPOS**

	<p><b>111</b></p> <p>Total Appointments</p>	<b>62</b>
		<b>97</b>
		Initial Assessment
		Follow Up

**Wet Age-related Macular Degeneration**

	<p><b>0</b></p> <p>Total Appointments</p>
--	---

**Diabetic Retinopathy Pathway**

	<p><b>0</b></p> <p>Total Appointments</p>
--	---

**Demand and unmet need for WGOS in North Denbighshire**

WGOS 4 HCQ is provided by one practice located in Conwy West, who provides the service on behalf of all clusters in the central area. Discussions have begun with higher certificate glaucoma optometrists about delivering WGOS 4 Glaucoma filtering and monitoring in primary care. WGOS 5 Independent Prescribing urgent care is offered by two practices in the

cluster. Referral numbers are increasing, and we are working with secondary care colleagues to redirect referrals to this pathway. Monitoring has not yet started.

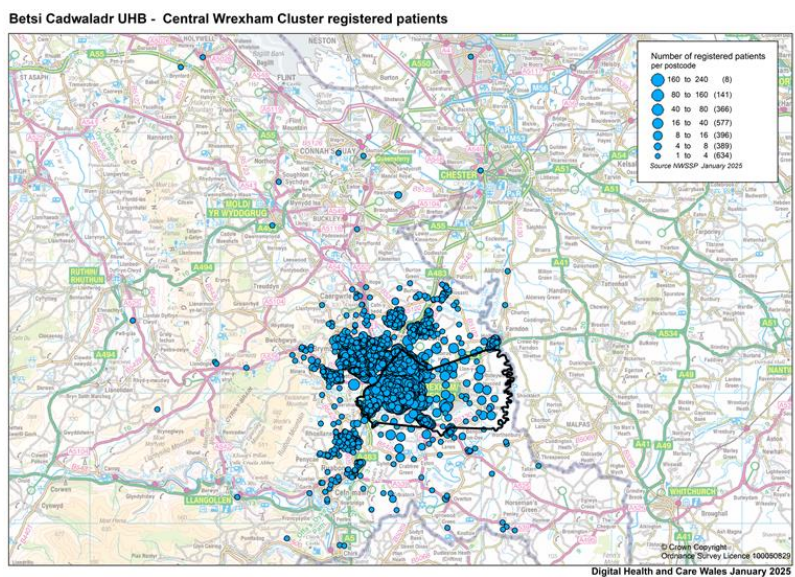
### 2.2.7.9 Central Wrexham

#### Overview

Central Wrexham Cluster, located in the heart of Wrexham, North Wales' largest city, serves as a hub for manufacturing, retail, education, and administration. It includes Wrexham Maelor Hospital, the largest acute hospital in North Wales, and HM Prison Berwyn, a Category C male prison with a capacity of 2,100 which opened in March 2017. The percentage of Welsh speakers in Central Wrexham is 11%.

The Central Wrexham Cluster brings together all local services involved in providing health and care across the Locality, serving a population of 57,900. The cluster consists of a GP collaborative made up of six GP Surgeries, a Pharmacy collaborative with thirteen pharmacies and an Optometry Collaborative consisting ten practices.

A map illustrating the Cluster area and population spread is below:



## About our Population

<b>Vulnerable populations and inequality</b>	<ul style="list-style-type: none"> <li>17.1% of patients living in most deprived 20% of WIMD</li> <li>22.9% children in relative income poverty</li> <li>13.3% are single person aged 66 and over households</li> <li>21.9% households only pensioners</li> <li>8.8% of the population provide unpaid care</li> <li>Approximately 400 Gypsy / Irish Travellers / Roma population living in East area</li> <li>4.5% households are overcrowded</li> </ul>
<b>Lifestyles and Prevention</b>	<ul style="list-style-type: none"> <li>23.8% of households have no car</li> <li>13.5% GP patients registered as being obese (BCUHB: 11.5%)</li> <li>Focus on frail &amp; vulnerable population</li> </ul>

### Population

Age group	Number	Cluster %	BCUHB %
0-15	10,800	18.7	17.3
16-29	9,600	16.6	14.8
30-34	12,100	20.9	16.8
45-65	15,450	26.7	28.9
66-84	8,550	14.8	19.3
85+	1,400	2.4	3.0
<b>Total</b>	<b>57,900</b>		

Chronic condition	Cluster (%)	BCUHB (%)
Asthma	6.9	7.5
Atrial fibrillation	2.3	2.7
Diabetes	7.7	8.0
Hypertension	16.2	17.3
Stroke & TIA	2.1	2.2

### Cluster Priorities

- Building Community Capacity & reducing admissions into Secondary Care
- Mental Health services with a focus on Tier 0 Occupational Therapists, CAMHS, elderly population and housebound patients
- Monitoring and managing chronic conditions
- Increasing prevention and wellbeing by focusing on healthy behaviours
- Improve access to services

The Optometric Practices that deliver WGOS in Central Wrexham are set out in the table below:

Practice Name	WGOS 1	WGOS 2	WGOS 3	WGOS 3 CVI	WGOS 4	WGOS 5	Wet AMD Pathway	Diabetic Retinopathy	Glaucoma ODT	Glaucoma Data Capture
A1 Eyewear (Wrexham)	Y	Y	Y							
Armstrong & North (Wrexham)	Y	Y								
Boots, Eagles Meadow (Wrexham)	Y	Y								
Boots, Hope Street (Wrexham)	Y	Y								
FA Schwartz (Wrexham)	Y	Y				Y				
I Matters Eyecare (Wrexham)	Y	Y	Y			Y				
Jane Smellie (Wrexham)	Y	Y	Y		Y	Y				
Specsavers (Wrexham)	Y	Y								
Vision Express, Tesco (Wrexham)	Y	Y								
Vision Express, Hope St (Wrexham)	Y	Y	Y							

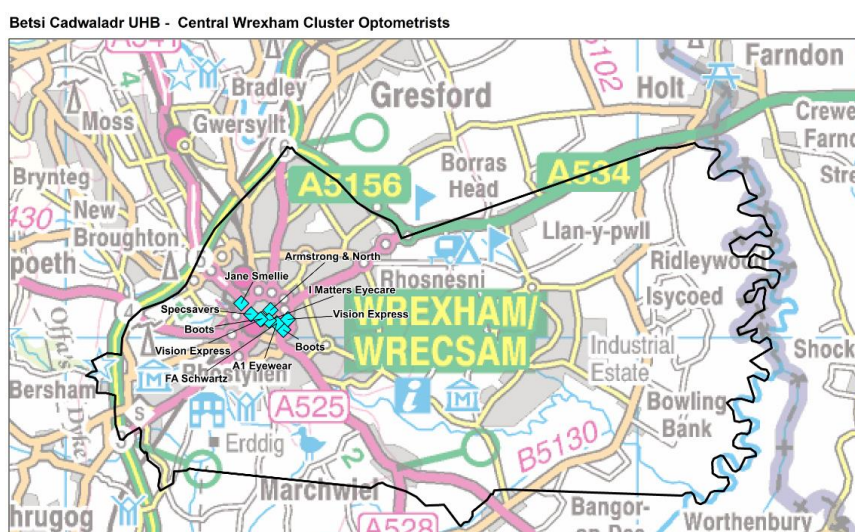
The opening times of each Optometric Practice is set out in the table below:

Practice Name	Monday	Tuesday	Wednesday	Thursday	Friday	Saturday	Sunday
A1 Eyewear (Wrexham)	09:00 – 17:00	10:00 – 17:00	09:00 – 17:00	09:00 – 17:00	09:00 – 17:00	Closed	Closed
Armstrong & North (Wrexham)	09:00 – 17:00	10:00 – 17:00	09:00 – 17:00	09:00 – 17:00	09:00 – 17:00	Closed	Closed

Boots, Eagles Meadow (Wrexham)	09:00 –18:00	09:00 –18:00	09:00 –18:00	09:00 –18:00	09:00 –18:00	08:30 – 18:00	10:00 –16:00
Boots, Hope Street (Wrexham)	09:00 –17:30	09:00 –17:30	09:00 –17:30	09:00 –17:30	09:00 –17:30	09:00 –17:30	Closed
FA Schwartz (Wrexham)	08:45 –17:30	08:45 –17:30	08:45 –17:30	08:45 –17:30	08:45 –17:30	08:45 – 16:30	Closed
I Matters Eyecare (Wrexham)	09:30 –17:30	09:30 –17:30	09:30 –17:30	09:30 –17:30	09:30 –17:30	Closed	Closed
Jane Smellie (Wrexham)	08.45 –17.30	08.45 –17.30	08.45 –17.30	08.45 –17.30	08.45 –17.30	08:00 –15:00 (alt Saturdays)	Closed
Specsavers (Wrexham)	09:30 –17:30	09:30 –17:30	09:30 –17:30	09:30 –17:30	09:30 –17:30	Closed	Closed
Vision Express, Tesco (Wrexham)	09:00 –17:30	09:00 –17:30	09:00 –17:30	09:00 –17:30	09:00 –17:30	09:00 –17:30	10:00 –16:00
Vision Express, Hope Street (Wrexham)	08:30 –17:00	08:30 –17:00	08:30 –17:00	08:30 –17:00	08:30 –17:00	08:30 –17:00	09:00 –15:00


Opening times are correct at March 2025 and are subject to amendment

The location of the optometric practices in Central Wrexham are set in the map below:




In 2024/25 Optometry activity in Central Wrexham included:

#### WGOS1 NHS Sight Tests


	<p><b>23957</b></p> <p>Total Appointments</p>	#Mobile
		Practice Based

#We are unable to split the mobile and practice based WGOS1 by cluster due to insufficient data refinement


#### Eye Health Examination Wales Claims

	<p><b>5901</b></p> <p>Total Appointments</p>	<b>2930</b> Band 1
		<b>2130</b> Band 2
		<b>841</b> Band 3


#### WGOS 5 IPOS

	<p><b>1157</b></p> <p>Total Appointments</p>	<b>529</b>
		Initial Assessment
		<b>628</b>
		Follow Up

#### Wet Age-related Macular Degeneration

	<p><b>0</b></p> <p>Total Appointments</p>
--	---

### Diabetic Retinopathy Pathway

	<b>0</b> Total Appointments
---	--------------------------------

### Demand and unmet need for WGOS in Central Wrexham

WGOS 4 HCQ is provided by one practice in the cluster and for all clusters in the east area. Discussions have begun with higher certificate glaucoma optometrists about delivering WGOS 4 Glaucoma filtering and monitoring in primary care. WGOS 5 Independent Prescribing urgent care is offered by several practices in the cluster. Referral numbers are increasing, and we are working with secondary care colleagues to redirect referrals to this pathway. Monitoring has not yet started.

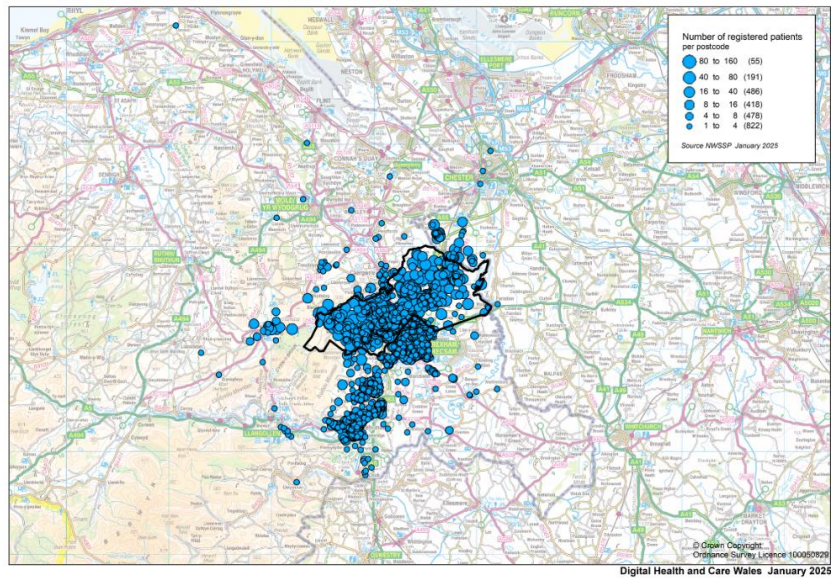
### 2.2.7.10 North & West Wrexham

#### Overview

The North and West Wrexham Cluster is located on the outskirts of Wrexham, bordering Flintshire and West Cheshire. It includes densely populated villages such as Coedpoeth, Gwersyllt, Llay, Brymbo, and Pentre Broughton, some of which are in the hills of North Wales. The area was historically reliant on coal mining and steelmaking, with Brymbo Steelworks and Gresford Colliery being notable features. Welsh speakers make up 12.4% of the population.

The North and West Wrexham Cluster brings together all local services involved in providing health and care across the Locality, serving a population of 32,500. The cluster consists of a GP collaborative made up of five GP Surgeries, a Pharmacy collaborative with seven pharmacies and a merged Optometry Collaborative with South Wrexham, consisting of four practices. A map illustrating the Cluster area and population spread is below:

Betsi Cadwaladr UHB - North and West Wrexham Cluster registered patients



## About our population

<b>Vulnerable populations and inequality</b>	<ul style="list-style-type: none"> <li>8.4% of patients living in most deprived 20% of WIMD</li> <li>28.4% children in relative income poverty</li> <li>10% of the population provide unpaid care</li> <li>25.7% households only pensioners</li> <li>13.9% are single person aged 66 and over households</li> <li>Approximately 400 Gypsy / Irish Travellers / Roma population living in East area</li> <li>3% households are overcrowded</li> <li>13.7% of households have no car</li> </ul>
<b>Lifestyles and Prevention</b>	<ul style="list-style-type: none"> <li>30.9% four to five year olds overweight or obese (BCUHB: 28.8%)</li> <li>14% GP patients registered as being obese (BCUHB: 11.5%)</li> <li>Focus on frail &amp; vulnerable population</li> </ul>

Chronic condition	Cluster (%)	BCUHB (%)
Asthma	7.9	7.5
Atrial fibrillation	2.6	2.7
Diabetes	7.9	8.0
Hypertension	17.6	17.3
Stroke & TIA	2.1	2.2

## Population

Age group	Number	Cluster %	BCUHB %
0-15	5,800	17.9	17.3
16-29	4,450	13.7	14.8
30-34	5,750	17.7	16.8
45-65	9,600	29.9	28.9
66-84	6,100	18.8	19.3
85+	800	2.4	3.0
<b>Total</b>	<b>32,500</b>		

### Cluster Priorities

- Building Community Capacity & reducing admissions into Secondary Care
- Home Visiting service targeting patients who are frail & vulnerable in their home and care / home setting
- Mental health Services, with a focus on Tier 0 Occupational Therapists and CAMHS
- Increasing prevention and wellbeing by focusing on healthy behaviours
- Improve access to services

The Optometric Practices that deliver WGOS in North and West Wrexham are set out in the table below:

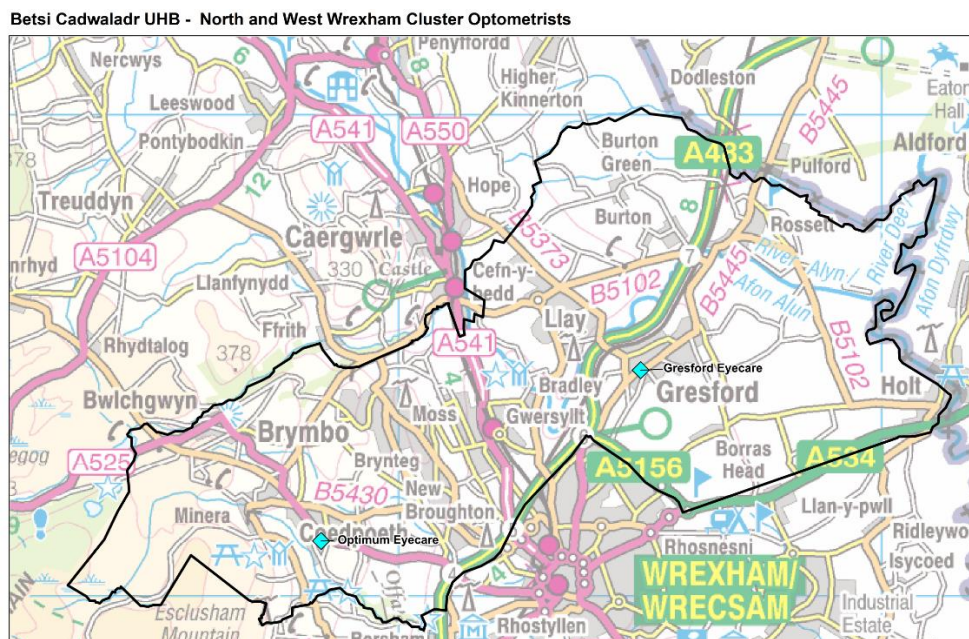
Practice Name	WGOS 1	WGOS 2	WGOS 3	WGOS 3 CVI	WGOS 4	WGOS 5	Wet AMD Pathway	Diabetic Retinopathy	Glaucoma ODTC	Glaucoma Data Capture
Optimum Eyecare (Coedpoeth)	Y	Y								
Gresford Eyecare (Gresford)	Y	Y								

The opening times of each Optometric Practice is set out in the table below:

Practice Name	Monday	Tuesday	Wednesday	Thursday	Friday	Saturday	Sunday
Optimum Eyecare (Coedpoeth)	09.00-17.00	09.00-17.00	09.00-17.00	09.00-17.00	09.00-17.00	09.00-12.30	Closed
Gresford Eyecare (Gresford)	09.00-17.30	09.00-17.30	09.00-17.30	09.00-17.30	09.00-17.30	09:00-13:00	Closed


Opening times are correct at March 2025 and are subject to amendment

The Optometric Practices are located in Coedpoeth and Gresford as set out in the map below:




In 2024/25 Optometry activity in North and West Wrexham included:

#### WGOS1 NHS Sight Tests


	<p><b>1458</b></p> <p>Total Appointments</p>	#Mobile
		Practice Based

#We are unable to split the mobile and practice based WGOS1 by cluster due to insufficient data refinement


#### Eye Health Examination Wales Claims

	<p><b>900</b></p> <p>Total Appointments</p>	<b>511</b> Band 1
		<b>209</b> Band 2
		<b>180</b> Band 3


#### WGOS 5 IPOS

	<p><b>0</b></p> <p>Total Appointments</p>	<b>0</b> Initial Assessment
		<b>0</b> Follow Up

#### Wet Age-related Macular Degeneration

	<p><b>0</b></p> <p>Total Appointments</p>
--	---

#### Diabetic Retinopathy Pathway

	<p><b>0</b></p> <p>Total Appointments</p>
---	---

## Demand and unmet need for WGOS in North and West Wrexham

WGOS 4 HCQ is provided by one practice located in Central Wrexham, who provides the service on behalf of all clusters in the east area. Discussions have begun with higher certificate glaucoma optometrists about delivering WGOS 4 Glaucoma filtering and monitoring in primary care WGOS 5 Independent Prescribing urgent care is not currently offered in North and West Wrexham, however our goal is to increase capacity across all clusters.

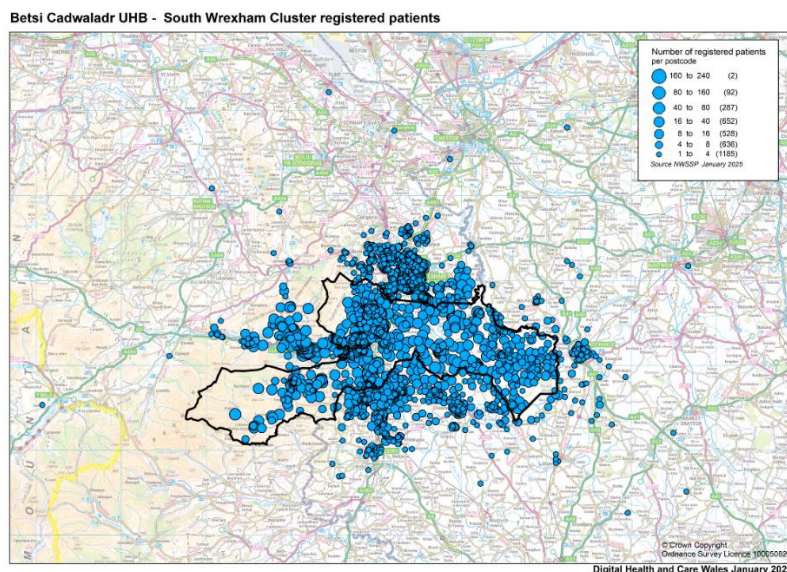
### 2.2.7.11 South Wrexham

#### Overview

The South Wrexham Cluster is located in the rural part of Wrexham County, including the villages of Ruabon and Rhosllannerchrugog, and the towns of Llangollen and Chirk, which borders Shropshire. The annual International Eisteddfod in Llangollen attracts many tourists in the summer. Historically, the area was industrialized with iron making, coal, and clay mining, with early immigration from Welsh-speaking upland agricultural areas of West Wales. Today, 14.4% of South Wrexham's population speaks Welsh.

The South Wrexham Cluster brings together all local services involved in providing health and care across the Locality, serving a population of 48,650. The cluster consists of a GP collaborative made up of eight GP Surgeries, a Pharmacy collaborative with ten pharmacies and a merged Optometry Collaborative with North and West Wrexham, consisting of four practices.

A map illustrating the Cluster area and population spread is below:



## About our Population

<b>Vulnerable populations and inequality</b>	<ul style="list-style-type: none"> <li>8.7% of patients living in most deprived 20% of WIMD</li> <li>33.9% children in relative income poverty</li> <li>15.1% are single person aged 66 and over households</li> <li>25.6% households only pensioners</li> <li>10.1% of the population provide unpaid care</li> <li>Approximately 400 Gypsy / Irish Travellers / Roma population living in East area</li> <li>3.2% households are overcrowded</li> <li>16.9% of households have no car</li> </ul>
<b>Lifestyles and Prevention</b>	<ul style="list-style-type: none"> <li>Focus on frail &amp; vulnerable population</li> <li>9.1% of adults smoke compared to 10.6% across BCUHB. There are stark differences between the least and most deprived communities</li> </ul>

### Population

Age group	Number	Cluster %	BCUHB %
0-15	8,750	18.0	17.3
16-29	7,000	14.4	14.8
30-34	8,250	17.0	16.8
45-65	14,500	29.8	28.9
66-84	8,800	18.1	19.3
85+	1,350	2.7	3.0
<b>Total</b>	<b>48,650</b>		

Chronic condition	Cluster (%)	BCUHB (%)
Asthma	7.9	7.5
Atrial fibrillation	2.8	2.7
Diabetes	7.9	8.0
Hypertension	18.3	17.3
Stroke & TIA	2.3	2.2

### Cluster Priorities

- Building Community Capacity & reducing admissions into Secondary Care
- Mental Health services with a focus on Tier 0 Occupational Therapists, CAMHS, elderly population and housebound patients
- Monitoring and managing chronic conditions
- Increasing prevention and wellbeing by focusing on healthy behaviours
- Improve access to services

The Optometric Practices that deliver WGOS in South Wrexham are set out in the table below:

Practice Name	WGOS 1	WGOS 2	WGOS 3	WGOS 3 CVI	WGOS 4	WGOS 5	Wet AMD Pathway	Diabetic Retinopathy	Glaucoma ODTC	Glaucoma Data Capture
Alpha Eyecare (Llangollen)	Y	Y	Y							
Armstrong & North (Chirk)	Y	Y								

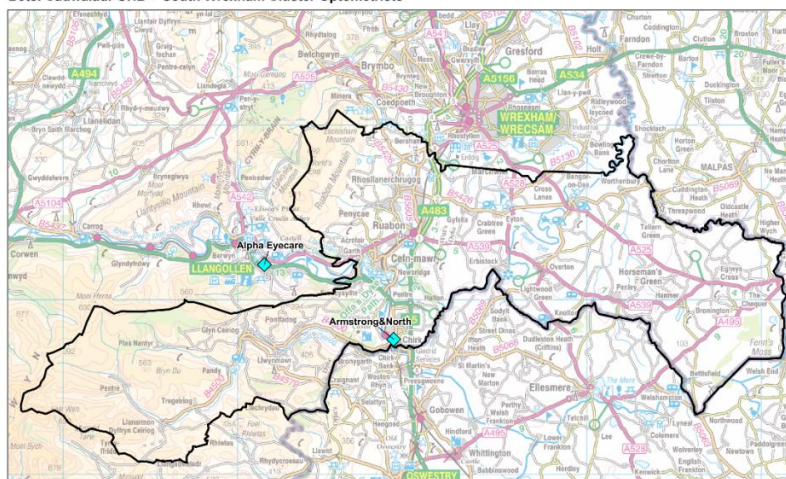
The opening times of each Optometric Practice is set out in the table below:

Practice Name	Monday	Tuesday	Wednesday	Thursday	Friday	Saturday	Sunday
Alpha Eyecare (Llangollen)	09:00-17:15	09:00-17:15	09:00-17:15	09:00-17:15	09:00-17:15	09:00-17:15	Closed
Armstrong & North (Chirk)	09:00-17:00	09:00-17:00	09:00-17:00	09:00-17:00	09:00-17:00	Closed	Closed

*Opening times are correct at March 2025 and are subject to amendment*


The Optometric Practices are located in Llangollen and Chirk as set out in the map below:

Betsi Cadwaladr UHB - South Wrexham Cluster Optometrists




In 2024/25 Optometry activity in South Wrexham included:

WGOS1 NHS Sight Tests


	<p><b>1687</b></p> <p>Total Appointments</p>	#Mobile
		Practice Based

Eye Health Examination Wales Claims


	<p><b>432</b></p> <p>Total Appointments</p>	<b>210</b> Band 1
		<b>165</b> Band 2
		<b>57</b> Band 3

#We are unable to split the mobile and practice based WGOS1 by cluster due to insufficient data refinement


WGOS 5 IPPOS

	<p><b>0</b></p> <p>Total Appointments</p>	<b>0</b> Initial Assessment
		<b>0</b> Follow Up

Wet Age-related Macular Degeneration

	<p><b>0</b></p> <p>Total Appointments</p>
--	---

Diabetic Retinopathy Pathway

	<p><b>0</b></p> <p>Total Appointments</p>
---	---

Demand and unmet need for WGOS in South Wrexham

WGOS 4 HCQ is provided by one practice in the Central Wrexham cluster, who provides the service on behalf of all clusters in the east area. Discussions have begun with higher certificate glaucoma optometrists about delivering WGOS 4 Glaucoma filtering and monitoring in primary care. WGOS 5 Independent Prescribing urgent care is not currently offered in South Wrexham, however our goal is to increase capacity across all clusters.

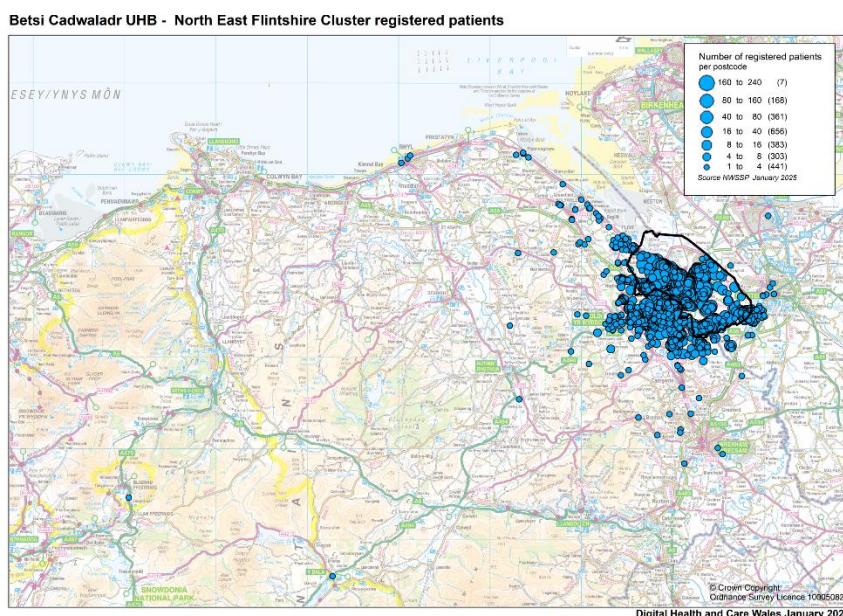
## 2.2.7.12 North East Flintshire

### Overview

North East Flintshire, situated on Deeside, includes Broughton, Connah’s Quay, Hawarden, Queensferry, and Shotton. Close to the Wales–England border and west of Chester, it is known for its industry. The area hosts Tata Steel, the Toyota engine plant, and the Airbus aerospace manufacturing site, which employs around 6,000 people locally and from Chester and the Wirral. Welsh speakers make up 8% of the population.

The North East Flintshire Cluster brings together all local services involved in providing health and care across the Locality, serving a population of 55,900. The cluster consists of a GP collaborative made up of seven GP Surgeries, a Pharmacy collaborative with twelve pharmacies and an Optometry collaborative consisting of six practices.

A map illustrating the Cluster area and population spread is below:



### About our Population

<b>Vulnerable populations and inequality</b>	• 13.3% of patients living in most deprived 20% of WIMD
	• 18.6% children in relative income poverty
	• 13.4% are single person aged 66 and over households
	• 23% households only pensioners
	• Approximately 400 Gypsy / Irish Travellers / Roma population living in East area
<b>Lifestyles and Prevention</b>	• 3.5% households are overcrowded
	• 15.9% of households have no car
	• 25% breastfeeding at 10 days (35.1% across BCUHB)
	• 31.6% four to five year olds overweight or obese (BCUHB: 28.8%)
	• 20.4% of adults report drinking alcohol above guidelines (16% BCUHB)

### Population

Age group	Number	Cluster %	BCUHB %
0-15	10,300	18.4	17.3
16-29	8,550	15.3	14.8
30-34	11,200	20.0	16.8
45-65	15,800	28.2	28.9
66-84	8,850	15.9	19.3
85+	1,200	2.2	3.0
<b>Total</b>	<b>55,900</b>		

Chronic condition	Cluster (%)	BCUHB (%)
Asthma	7.0	7.5
Atrial fibrillation	2.4	2.7
Diabetes	7.6	8.0
Hypertension	16.5	17.3
Stroke & TIA	1.9	2.2

#### Cluster Priorities

- Building Community Capacity & reducing admissions into Secondary Care
- Focus on and increasing Mental Health / Psychotherapy services
- Increasing prevention and wellbeing by focusing on healthy behaviours
- Improve access to services
- Reducing admissions into Secondary Care

The Optometric Practices that deliver WGOS in North East Flintshire are set out in the table below:

Practice Name	WGOS 1	WGOS 2	WGOS 3	WGOS 3 CVI	WGOS 4	WGOS 5	Wet AMD Pathway	Diabetic Retinopathy	Glaucoma ODTC	Glaucoma Data Capture
Asda Opticians (Queensferry)	Y	Y								
Boots (Broughton)	Y	Y								
Quayside Opticians Ltd (C Quay)	Y	Y								
Specsavers (Broughton)	Y	Y				Y				
Vision Express (Broughton)	Y	Y								
Vision Express (Shotton)	Y	Y								

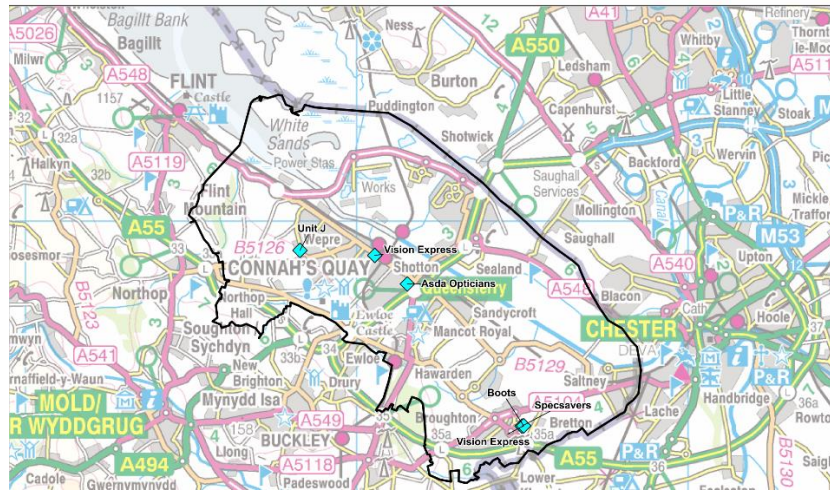
The opening times of each Optometric Practice is set out in the table below:

Practice Name	Monday	Tuesday	Wednesday	Thursday	Friday	Saturday	Sunday
Asda Opticians (Queensferry)	09:00 – 18:30	09:00 – 19:30	09:00 – 18:30	09:00 – 19:30	09:00 – 18:30	09:00 – 18:30	10:00 – 16:00
Boots (Broughton)	09:00 – 20:00	09:00 – 20:00	09:00 – 20:00	09:00 – 20:00	09:00 – 20:00	09:00 – 19:00	10:00 – 17:00
Quayside Opticians Ltd (C Quay)	09:00 – 17:30	09:00 – 17:30	09:00 – 17:30	09:00 – 17:30	09:00 – 17:30	Closed	Closed
Specsavers (Broughton)	08:30 – 18:00	08:30 – 18:00	08:30 – 18:00	08:30 – 18:00	08:30 – 18:00	09:00 – 17:00	10:00 – 17:00
Vision Express (Broughton)	09:00 – 17:30	09:00 – 17:30	09:00 – 17:30	09:00 – 17:30	09:00 – 17:30	09:00 – 17:30	Closed
Vision Express (Shotton)	09:00 – 17:30	09:00 – 17:30	09:00 – 17:30	09:00 – 17:30	09:00 – 17:30	09:00 – 17:00	Closed

*Opening times are correct at March 2025 and are subject to amendment*


The Optometric Practices are located in Connah's Quay, Shotton, Queensferry and Broughton as set out in the map below:

**Betsi Cadwaladr UHB - North East Flintshire Cluster Optometrists**




**In 2024/25 Optometry activity in North East Flintshire included:**

**WGOS1 NHS Sight Tests**


	<p><b>17019</b></p> <p>Total Appointments</p>	#Mobile
		Practice Based

#We are unable to split the mobile and practice based WGOS1 by cluster due to insufficient data refinement


**Eye Health Examination Wales Claims**

	<p><b>3128</b></p> <p>Total Appointments</p>	<b>1891</b> Band 1
		<b>876</b> Band 2
		<b>361</b> Band 3


**WGOS 5 IPOS**

	<p><b>156</b></p> <p>Total Appointments</p>	<b>92</b>
		<b>64</b>
		Initial Assessment
		Follow Up

**Wet Age-related Macular Degeneration**

	<p><b>0</b></p> <p>Total Appointments</p>
--	---

**Diabetic Retinopathy Pathway**

	<p><b>0</b></p> <p>Total Appointments</p>
---	---

**Demand and unmet need for WGOS in North East Flintshire**

WGOS 4 HCQ is provided by one practice located in Central Wrexham, who provides the service on behalf of all clusters in the east area. Discussions have begun with higher certificate glaucoma optometrists about delivering WGOS 4 Glaucoma filtering and monitoring in primary care. WGOS 5 Independent Prescribing urgent care is offered by one practice in the

cluster. Referral numbers are increasing, and we are working with secondary care colleagues to redirect referrals to this pathway. Monitoring has not yet started.

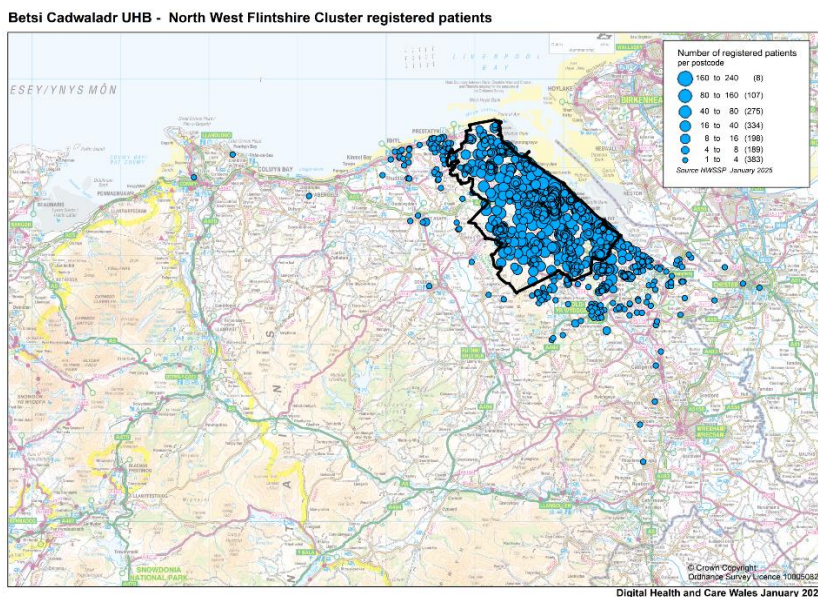
### 2.2.7.13 North West Flintshire

#### Overview

North West Flintshire is located along the River Dee, overlooking the Wirral estuary. The cluster centres around the market towns of Flint and Holywell, extending to the North Denbighshire border. It includes urban and rural villages such as Bagillt, Brynford, Halkyn, Greenfield, Mostyn, and other smaller communities. Historically, the area relied on lead mining and cotton mills. Welsh speakers make up 13% of the population.

The North West Flintshire Cluster brings together all local services involved in providing health and care across the Locality, serving a population of 36,150. The cluster consists of a GP collaborative made up of seven GP Surgeries, a Pharmacy collaborative with nine pharmacies and an Optometry collaborative consisting of two practices.

A map illustrating the Cluster area and population spread is below:



## About our Population

<b>Vulnerable populations and inequality</b>	<ul style="list-style-type: none"> <li>• 18.6% of patients living in most deprived 20% of WIMD</li> <li>• 25.5% children in relative income poverty</li> <li>• 14.3% are single person aged 66 and over households</li> <li>• 24.2% households only pensioners</li> <li>• 10.6% of the population provide unpaid care</li> <li>• Approximately 400 Gypsy / Irish Travellers / Roma population living in East area</li> <li>• 3.3% households are overcrowded</li> <li>• 17.6% of households have no car</li> </ul>
<b>Lifestyles and Prevention</b>	<ul style="list-style-type: none"> <li>• 25% breastfeeding at 10 days compared to 35.1% across BCUHB</li> <li>• 31.6% four to five year olds overweight or obese (BCUHB: 28.8%)</li> <li>• Focus on frail &amp; vulnerable population</li> </ul>

### Population

Age group	Number	Cluster %	BCUHB %
0-15	6,550	18.1	17.3
16-29	5,600	15.4	14.8
30-34	6,400	17.7	16.8
45-65	10,550	29.1	28.9
66-84	6,200	17.2	19.3
85+	850	2.3	3.0
<b>Total</b>	<b>36,150</b>		

Chronic condition	Cluster (%)	BCUHB (%)
Asthma	7.3	7.5
Atrial fibrillation	2.4	2.7
Diabetes	8.3	8.0
Hypertension	18.1	17.3
Stroke & TIA	1.9	2.2

### Cluster Priorities

- Building Community Capacity & reducing admissions into Secondary Care
- Mental Health services with a focus on Tier 0 Occupational Therapists, CAMHS, elderly population and housebound patients
- Increasing prevention and wellbeing by focusing on healthy behaviours
- Improve access to services
- Target marginalised groups via Inverse Care Law pilot

The Optometric Practices that deliver WGOS in North West Flintshire are set out in the table below:

Practice Name	WGOS 1	WGOS 2	WGOS 3	WGOS 3 CVI	WGOS 4	WGOS 5	Wet AMD Pathway	Diabetic Retinopathy	Glaucoma ODT	Glaucoma Data Capture
Roberts & Polson (Flint)	Y	Y								
Specsavers (Flint)	Y	Y								

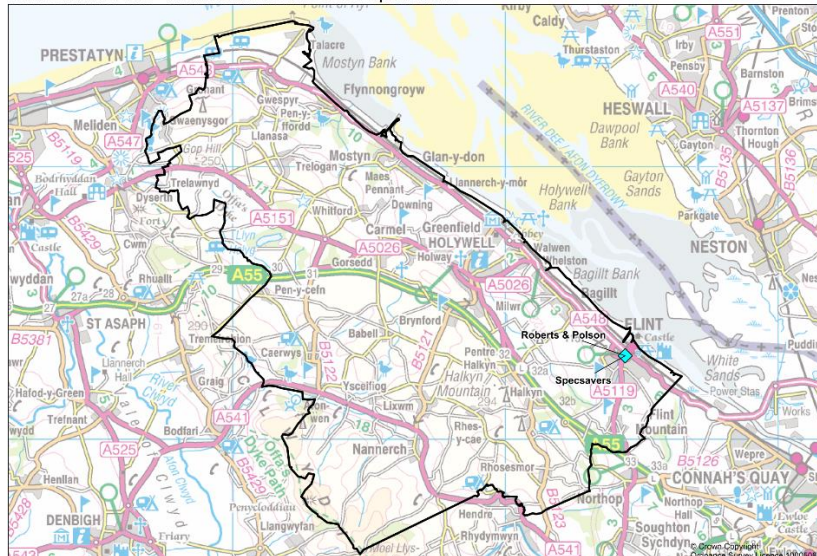
The opening times of each Optometric Practice is set out in the table below:

Practice Name	Monday	Tuesday	Wednesday	Thursday	Friday	Saturday	Sunday
Roberts & Polson (Flint)	09:00 – 17:00	09:00 – 17:00	09:45 – 17:00	09:00 – 17:00	09:00 – 17:00	Closed	Closed
Specsavers (Flint)	08:45 – 17:30	08:45 – 17:30	08:45 – 17:30	08:45 – 17:30	09:00 – 17:00	08:45 – 17:15	Closed

*Opening times are correct at March 2025 and are subject to amendment*


The location of the optometric practices in North West Flintshire are located in Flint as set out in the map below:

**Betsi Cadwaladr UHB - North West Flintshire Cluster Optometrists**




**In 2024/25 Optometry activity in North West Flintshire included:**

**WGOS1 NHS Sight Tests**


	<p><b>4769</b></p> <p>Total Appointments</p>	Mobile
		Practice Based

#We are unable to split the mobile and practice based WGOS1 by cluster due to insufficient data refinement


**Eye Health Examination Wales Claims**

	<p><b>1474</b></p> <p>Total Appointments</p>	<b>829</b> Band 1
		<b>372</b> Band 2
		<b>273</b> Band 3


**WGOS 5 IPOS**

	<p><b>0</b></p> <p>Total Appointments</p>	<b>0</b> Initial Assessment
		<b>0</b> Follow Up

**Wet Age-related Macular Degeneration**

	<p><b>0</b></p> <p>Total Appointments</p>
--	---

**Diabetic Retinopathy Pathway**

	<p><b>0</b></p> <p>Total Appointments</p>
---	---

**Demand and unmet need for WGOS in North West Flintshire**

WGOS 4 HCQ is provided by one practice located in Central Wrexham, who provides the service on behalf of all CLUSTERS in the east area. Discussions have begun with higher certificate glaucoma optometrists about delivering WGOS 4 Glaucoma filtering and monitoring in primary care. WGOS 5 Independent Prescribing urgent care is offered at the Ophthalmic Diagnostic and Treatment Centre (ODTC) located at Holywell Hospital. Referral numbers are

increasing, and we are working with secondary care colleagues to redirect referrals to this pathway. Monitoring has not yet started.

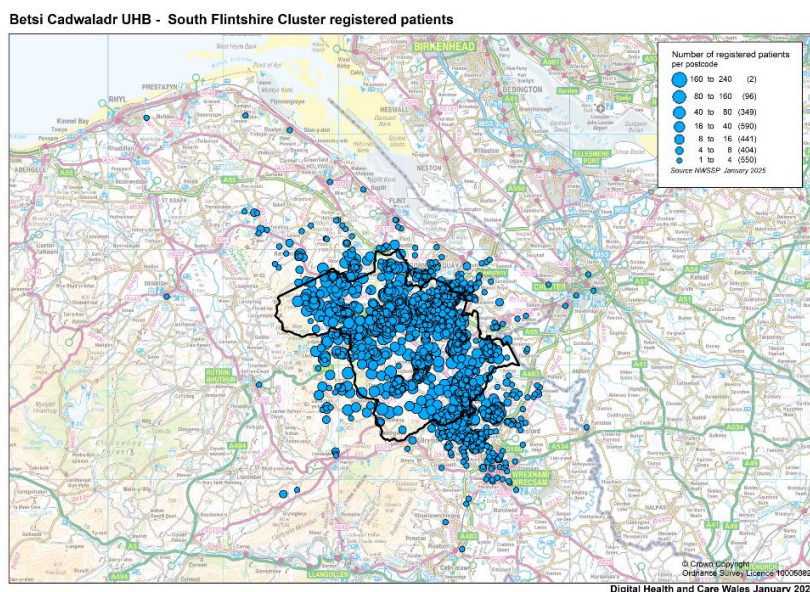
### 2.2.7.14 South Flintshire

#### Overview

South Flintshire includes the towns of Mold and Buckley, and the villages of Hope and Caergwrle. Key community assets are The Clwydian Range, Loggerhead's Country Park, and Clwyd Theatr Cymru. Mold hosts annual festivals and events and has the county's only Welsh medium secondary school. Welsh speakers make up 13.5% of the population.

The South Flintshire Cluster brings together all local services involved in providing health and care across the Locality, serving a population of 56,500. The cluster consists of a GP collaborative made up of six GP Surgeries, a Pharmacy collaborative with nine pharmacies and an Optometry collaborative consisting of seven practices.

A map illustrating the Cluster area and population spread is below:



## About our Population

<b>Vulnerable populations and inequality</b>	<ul style="list-style-type: none"> <li>• 2.8% of patients living in most deprived 20% of WIMD</li> <li>• 27.4% children in relative income poverty</li> <li>• 15% are single person aged 66 and over households</li> <li>• 28% households only pensioners</li> <li>• 9.6% of the population provide unpaid care</li> <li>• Approximately 400 Gypsy / Irish Travellers / Roma population living in East area</li> <li>• 2.6% households are overcrowded</li> <li>• 11.8% of households have no car</li> </ul>
<b>Lifestyles and Prevention</b>	<ul style="list-style-type: none"> <li>• Focus on frail &amp; vulnerable population</li> <li>• Mental Health services with a focus on CAMHS</li> <li>• 31.6% four to five year olds overweight or obese (BCUHB: 28.8%)</li> </ul>

### Population

Age group	Number	Cluster %	BCUHB %
0-15	9,600	17.0	17.3
16-29	7,800	13.8	14.8
30-34	9,550	16.9	16.8
45-65	16,800	29.7	28.9
66-84	11,200	19.8	19.3
85+	1,550	2.7	3.0
<b>Total</b>			

Chronic condition	Cluster (%)	BCUHB (%)
Asthma	7.5	7.5
Atrial fibrillation	2.7	2.7
Diabetes	7.5	8.0
Hypertension	16.9	17.3
Stroke & TIA	2.3	2.2

### Cluster Priorities

- Building Community Capacity & reducing admissions into Secondary Care
- Monitoring and managing chronic conditions
- Mental Health services with a focus on CAMHS, elderly population and housebound patients
- Increasing prevention and wellbeing by focusing on healthy behaviours
- Improve access to services

The Optometric Practices that deliver WGOS in South Flintshire are set out in the table below:

Practice Name	WGOS 1	WGOS 2	WGOS 3	WGOS 3 CVI	WGOS 4	WGOS 5	Wet AMD Pathway	Diabetic Retinopathy	Glaucoma ODTC	Glaucoma Data Capture
Alton Murphy Ltd (Mold)	Y	Y	Y							
Armstrong & North (Buckley)	Y	Y								
Buckley Eyecare (Buckley)	Y	Y				Y				
Smith Family Opticians (Mold)	Y	Y				Y				
Specsavers (Mold)	Y	Y								
Vision Express (Mold)	Y	Y								

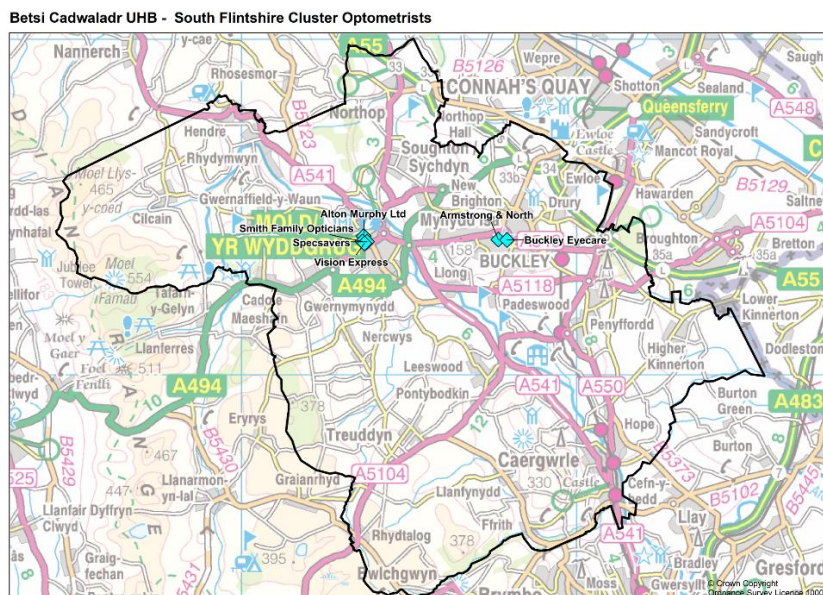
The opening times of each Optometric Practice is set out in the table below:

Practice Name	Monday	Tuesday	Wednesday	Thursday	Friday	Saturday	Sunday
Alton Murphy Ltd (Mold)	09:00 – 17:00	09:00 – 17:00	09:00 – 17:00	09:00 – 17:00	09:00 – 17:00	Closed	Closed
Armstrong & North (Buckley)	09:00 – 17:00	09:00 – 17:00	09:00 – 17:00	09:00 – 17:00	09:00 – 17:00	Closed	Closed
Buckley Eyecare (Buckley)	09:00 – 17:00	09:00 – 17:00	09:00 – 17:00	09:00 – 17:00	09:00 – 17:00	Closed	Closed

Smith Family Opticians (Mold)	08:45 – 17:30	08:45 – 17:30	08:45 – 17:30	08:45 – 17:30	08:45 – 17:30	09:00 – 13:00	Closed
Specsavers (Mold)	08:30 – 17:30	08:30 – 17:30	08:30 – 17:30	08:30 – 17:30	08:30 – 17:30	08:30 – 17:30	Closed
Vision Express (Mold)	09:00 – 17:30	09:00 – 17:30	09:00 – 17:30	09:00 – 17:30	09:00 – 17:30	09:00 – 17:00	Closed

Opening times are correct at March 2025 and are subject to amendment

The Optometric Practices are located in Mold and Buckley as set out in the map below:



In 2024/25 Optometry activity in South Flintshire included:

#### WGOS1 NHS Sight Tests

	<b>13406</b> Total Appointments	Mobile
		Practice Based

#We are unable to split the mobile and practice based WGOS1 by cluster due to insufficient data refinement

#### Eye Health Examination Wales Claims

	<b>4155</b> Total Appointments	<b>2449</b> Band 1
		<b>1060</b> Band 2
		<b>646</b> Band 3

#### WGOS5 IPOS

	<b>123</b> Total Appointments	<b>70</b> Initial Assessment
		<b>53</b> Follow Up

#### Wet Age-related Macular Degeneration

	<b>0</b> Total Appointments
--	--------------------------------

#### Diabetic Retinopathy Pathway

	<b>0</b> Total Appointments
--	--------------------------------

## Demand and unmet need for WGOS in South Flintshire

WGOS 4 HCQ is provided by one practice located in Central Wrexham, who provides the service on behalf of all clusters in the east area. Discussions have begun with higher certificate glaucoma optometrists about delivering WGOS 4 Glaucoma filtering and monitoring in primary care. WGOS 5 Independent Prescribing urgent care is offered by two practices in the cluster. Referral numbers are increasing, and we are working with secondary care colleagues to redirect referrals to this pathway. Monitoring has not yet started.

## 2.3 Cardiff and the Vale University Health Board

## 2.4 Cwm Taf Morgannwg University Health Board

## 2.5 Hywel Dda University Health Board

## 2.6 Powys Teaching Health Board

## 2.7 Swansea Bay University Health Board

## References

1. The National Health Service (Wales) Act 2006 The National Health Service (Wales Eye Care Services) (Wales) (No. 2) Directions 2024 (Welsh Government) (2024).
2. ONS. Population estimates for the UK, England, Wales, Scotland and Northern Ireland: mid-2023. 2023.
3. Pezzullo L, Streatfeild J, Simkiss P, Shickle D. The economic impact of sight loss and blindness in the UK adult population. *Bmc Health Services Research*. Jan 2018;1863. doi:10.1186/s12913-018-2836-0
4. Walker ER, McGee RE, Druss BG. Mortality in mental disorders and global disease burden implications: a systematic review and meta-analysis. *JAMA Psychiatry*. Apr 2015;72(4):334-41. doi:10.1001/jamapsychiatry.2014.2502
5. West SK, Rubin GS, Broman AT, Munoz B, Bandeen-Roche K, Turano K. How does visual impairment affect performance on tasks of everyday life? The SEE Project. Salisbury Eye Evaluation. *Arch Ophthalmol*. Jun 2002;120(6):774-80. doi:10.1001/archopht.120.6.774
6. Lamoureux EL, Hassell JB, Keeffe JE. The determinants of participation in activities of daily living in people with impaired vision. *Am J Ophthalmol*. Feb 2004;137(2):265-70. doi:10.1016/j.ajo.2003.08.003

7. Ogedengbe TO, Sukhai M, Wittich W. Towards identifying gaps in employment integration of people living with vision impairment: A scoping review. *Work*. 2024;78(2):317-330. doi:10.3233/WOR-230018
8. Chai YX, Gan ATL, Fenwick EK, et al. Relationship between vision impairment and employment. *Br J Ophthalmol*. Mar 2023;107(3):361-366. doi:10.1136/bjophthalmol-2021-319655
9. Schakel W, van der Aa HPA, Bode C, Hulshof CTJ, van Rens G, van Nispen RMA. The Economic Burden of Visual Impairment and Comorbid Fatigue: A Cost-of-Illness Study (From a Societal Perspective). *Investigative Ophthalmology & Visual Science*. Apr 2018;59(5):1916-1923. doi:10.1167/iovs.17-23224
10. WG. National Clinical Strategy for Ophthalmology. NHS; 2024.
11. NWSSP. Values and Standards of Behaviour Framework. NWSSP. Accessed 26/12/2014, 2024. <https://nwssp.nhs.wales/a-wp/governance-e-manual/living-public-service-values/values-and-standards-of-behaviour-framework/>
12. WG. Well-being of Future Generations (Wales) Act 2015. Welsh Government; 2015.
13. WG. A Healthier Wales: our Plan for Health and Social Care. Welsh Government; 2021.
14. NHS Wales Eye Health Care Future Approach for Optometry Services (Welsh Government) (2021).
15. WG. Welsh Index Multiple Deprivation. WG. Accessed 25/11/24, 2024. <https://statswales.gov.wales/Catalogue/Community-Safety-and-Social-Inclusion/Welsh-Index-of-Multiple-Deprivation>