

# North Wales Social Prescribing Report

April 2024

BCUHB Public Health





# Background & Context

Following the launch of the [National Framework for Social Prescribing in Wales](#) (07.12.23) Regional Partnership Boards were tasked with leading on local implementation within their geographic regions.

The scope of this report for north Wales is to:

- Provide a high-level overview of current Social Prescribing activity across the north Wales region.
- Provide insight into the challenges and opportunities faced by commissioners and providers of services.
- Give consideration to a regional programme of work which would be required to successfully implement the National Framework most effectively across the local region.

By adopting the recommendations outlined in this report partners can work together more effectively to ensure that investment of funding is maximised, and that there is shared accountability for reducing health inequalities and improving longer-term population health and wellbeing outcomes across the region.





# What is Social Prescribing?

Social Prescribing is not a new concept. For many years Social Prescribing style interventions have been developed and established in a bottom-up way across communities, with individual contracted providers involving stakeholders in health and care, third sector and statutory organisations all developing different delivery models.

The National Framework for Social Prescribing in Wales defines it as:

***“a person-centred approach to connecting people to community assets”***

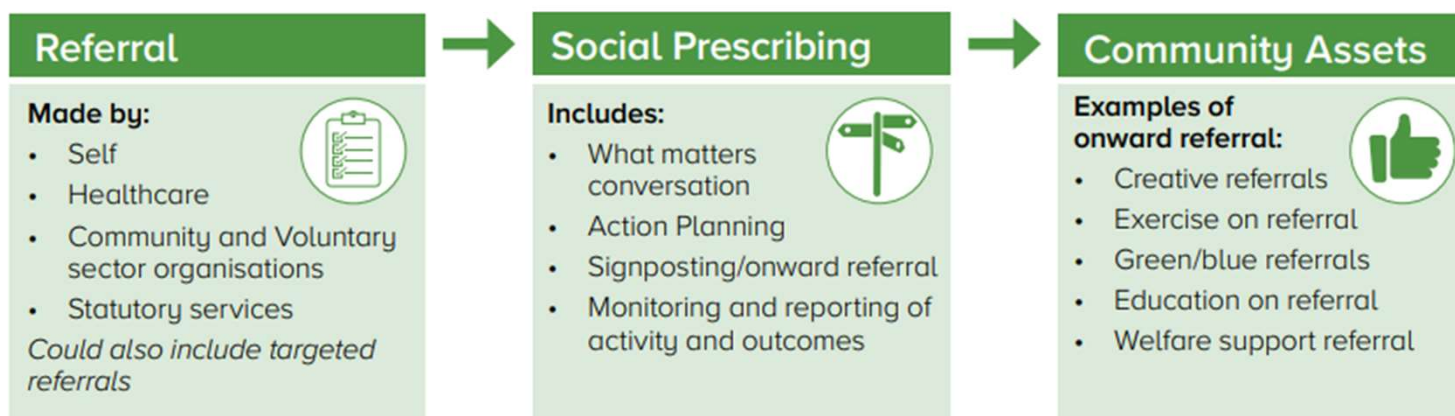
Social prescribing is an umbrella term that describes a person-centred approach to linking people to community-based, non-clinical support. It is a way of connecting people, whatever their age or background, with their community to better manage their health and well-being. It aims to empower individuals to recognise their own needs, strengths, and personal assets.





# Social Prescribing Pathways

The National Framework notes that there is much variation across the system in Wales, but broadly speaking the pathway can be broken down into 3 distinct parts:



Much variation is also evident across the system in north Wales, but this is perfectly understandable and acceptable given that services should be localised to meet the identified needs of local communities and built upon the resilience of existing community assets (or investment in any identified gaps)





# Individual / Population Health Outcomes



## Long-term Outcomes of Social Prescribing

1. Improved population mental wellbeing and reduction in overall prevalence and inequalities within mental ill health
2. Improved population physical wellbeing and reduction in overall prevalence and inequalities within physical ill health
3. Improved population social wellbeing and reduction in overall prevalence and inequalities within poor social wellbeing, loneliness and isolation
4. A system impact on the wider determinants of health
5. Improved community wellbeing





# Recommendations for Regional Implementation

## 1. Develop a shared purpose and vision

Regional partners should develop and agree a shared purpose and vision for Social Prescribing which provides a coherent joined-up shared approach to implementation and delivery across north Wales with a particular focus on inequalities and keeping people well and out of health and care services.

**How? Who?** - RPB are asked to support this recommendation and endorse the shared purpose and vision of Social Prescribing for north Wales

**When?** – By end Q1 2024/25







# Recommendations for Regional Implementation

## 2. Agree clear reporting and evaluation of outcomes

A regional group should be supported with its aims to develop agreed data reporting standards which can ensure that commissioners and providers can work together to develop a more effective intelligence-led decision making approach through data and identification of potential gaps in service provision across north Wales

**How? Who?** - RPB are asked to support this recommendation and empower the regional working group to interface with the national group defining data and reporting standards for Social Prescribing interventions which meet the needs of north Wales partners

**When?** – By end Q2 2024/25





# Recommendations for Regional Implementation

## 3. Working at the community level, Local Action Groups should be empowered to meet the identified needs of local communities

All stakeholders should come together in each Local Authority geographic area to form Steering Groups to inform localised requirements and provision of Social Prescribing and Community Hubs

**How? Who?** - RPB are asked to support this recommendation and empower Local Action Groups working with all stakeholders in each local community to define agreed requirements and mechanisms to commission / tender for services required from 2025/26 onwards

**When?** – By end Q3 2024/25







# Recommendations for Regional Implementation

## 4. Partners will need to bring together and maximise all available sources of funding and allocate according to identified needs

A more strategic oversight of the various (public and non-public) funding opportunities will be required to rise to the challenges facing our local communities

**How? Who?** - RPB are asked to support this recommendation and empower Local Action Groups working with all stakeholders in each local community to ensure appropriate and sustainable budgets can be in place from 2025/26 onwards

**When?** – By end Q4 2024/25





# Recommendations for Regional Implementation

## 5. Embed a clear and robust governance framework

Partners should establish the regional, sub-regional and local governance required to make well-informed investment decisions based on identified needs, to ensure that there is accountability for the outcomes delivered and that all stakeholders within the system are appropriately represented.

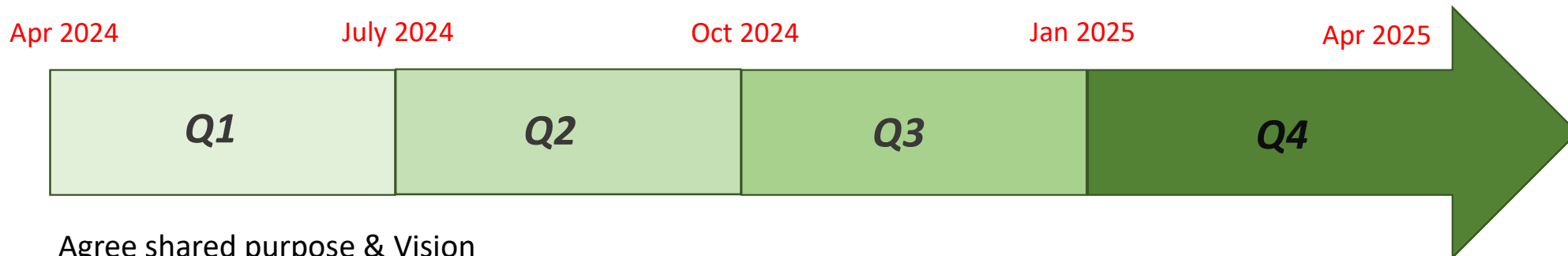
**How? Who?** - RPB are asked to support this recommendation and ensure all partners have agreed and established the appropriate governance frameworks through review of Terms of Reference, Membership and Cycles of Business for various existing groups and any identified gaps.

**When?** – By end Q2 2024/25 (*NB this will be required in advance of recommendations 3 & 4 to ensure investment decisions can achieve appropriate governance approvals*)





# North Wales Implementation Timeline



Agree shared purpose & Vision

Establish governance framework

Agree reporting & evaluation of  
outcomes

Form Local Action Groups

Maximise funding opportunities and  
allocate according to identified needs  
(2025/26 and beyond)

